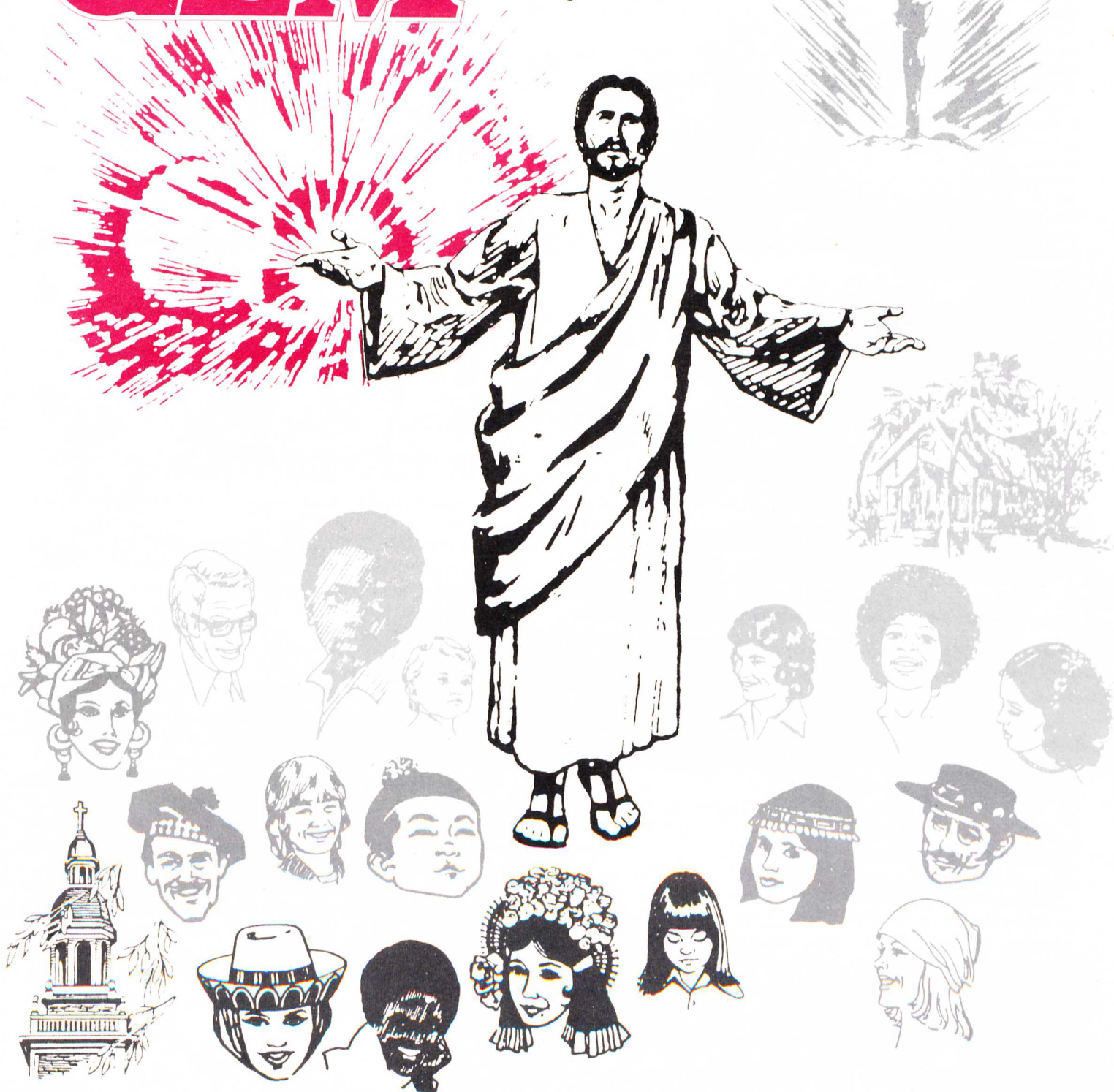


GEM

THE
FREE WILL BAPTIST

Volume 59, No. 2
March-April 1989



*"... And that repentance and remission of sins
should be preached in His Name among all nations ..."*

Luke 24:47

SUNDAY SCHOOL ATTENDANCE AVERAGES 1988-1989

CHURCHES	FEB	MAR	APR	MAY	JUN	JUL	AUG	SEPT	OCT	NOV	DEC	JAN
Belton	47	50	45		31	31	32	36	35	35		36
Calvary Fellowship	244	321	264	210	198	188	202	231	287			
Cape Girardeau	68	66	58	53	58	46	57	57	52	53	41	47
Central												78
Copper Mines	87	121	95	88	85	86	88	75	79	84	90	81
Cuba	89	76	76	75	74	73	70	68	75	79		
DeSoto	189	214	208	184	195	187	190	190	193	177		172
Farmington							363	353	346	343	341	300
Flat River, First	115				126		166	167	183	181	154	148
Grace			147		140	187						
Hannon		74	78	75	77	79	72	77	73	72	77	78
Harmony								86	74	73	63	
Hartville	89	89	88		90	89	94	82	94	93	98	
Houston	88	89	85	84	83	82	91	78	95	92		
Lebanon, First	85	90	96	90	87	88	91		88	90	80	89
Myrtle	34	33	41	34	35	41	39	34	35	38		
Neosho	96	142	101	83	74	78	103					
Parkview	69	79	77	69	69	63	66	60	55	57	64	53
Pleasant Home	77	80	83	61	57	83	90	85	87	77	86	75
Richwoods					42	40						
Rock Chapel	55	62	72	66	77	64	70	62	63	63	68	59
Southside	67	65	82	72	72	67	73	66	68	72	69	67
Springfield, First		164	216	166	137	138	132	117	123	120	145	170
Thayer		141		137	129							
United, West Plains	87	108	99	118	115	108	112	128	125	137	137	133
Verdella	75	80	79	83	83	84	74	79	85	82	90	
Victory, K.C.							57	71	75	68	77	76
West Plains, First	141	147	137	128	126	132	119	127	155	130	131	138
Willow Springs	68	69	70	65	74	62	66	71	85	75	77	

The above is only a partial listing — there are 170 Free Will Baptist churches in Missouri.
Every church is encouraged to send its Sunday School averages in each month to be listed in the above report.

Minute Meditation

by Gene Crewse



"Whatever thy hand findeth to do, do it with all thy might." Ecc. 9:10b

Someone has paraphrased this verse to read, "whatever you do, do well." I once had a foreman, probably unaware that this verse was in the Bible, who had a favorite saying. "Be the job great or small do it right or not at all."

My aim in this meditation is to stress the fact that every local church needs people with moral principles and high standards. People who will do their best, with enthusiasm, to accomplish the task set before them. The task, as I see it, is three-fold. To reach the lost for Jesus, to bring the backslider back to Jesus, and to teach the saved the ways of Jesus. I want to challenge each one to serve God with all your might, wherever He has called you to serve.

The first thing is to use the opportunity to change the segment of society in which we live. By living soberly, righteously, and godly in this present world, we can make a difference. Use your attitude, activity and appearance as opportunities to change those you are around.

If we seek to change our society, we will soon realize that we will face opposition from the careless segment of society. Our adversary, the devil, will make sure the lazy, the selfish, and the bitter of our communities will oppose us.

Finally, I want to encourage you to be optimistic about the chance to serve in your area of society. If through discipline, determination and dependability we can realize that "little is much when God is in it", then we can change the corner of the world in which we live.

There, we have it! "Whatsoever thy hand findeth to do, do it with all thy might!" To me this means to seize the opportunity to serve, face the opposition while serving, and use your optimism in serving — doing all to the glory of God.

All items for publication must be in the hands of the editor *no later than the 15th of the month* preceding the issue month.

Business Office: 200 West Commercial, Lebanon, Missouri 65536

Clarence Burton, Editor

Address all correspondence relating to the GEM, including subscription and mailing information, to the above address.

The sermons and articles published in the GEM represent the personal views of the authors and not necessarily the views and policies of the Missouri State Association of Free Will Baptists or of the editor.

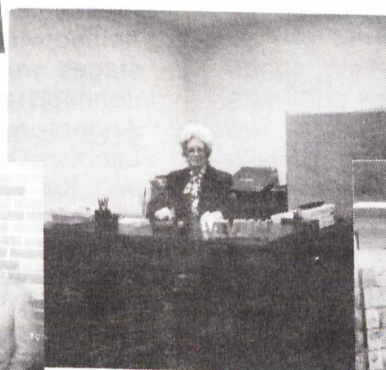
Subscription Rates: Single subscription, \$3.50 per year, cash in advance. Church Plan: \$3.00 per year consisting of five subscriptions or more. The Church Plan will continue until it is canceled by the church.

This magazine is published bi-monthly.

RIBBON-CUTTING CEREMONY

STATE OFFICE BUILDING & LEBANON BIBLE AND BOOKSTORE

Approximately 140 people gathered for the ceremony. It was a great time! Thanks to the many Free Will Baptists who came from various parts of Missouri and to the townspeople. Everyone enjoyed it!



Missouri State Association Convention June 5-8, 1989 Lebanon, Missouri

These are available motels in Lebanon, with rates as listed:

Super 8 Motel, City Rt. I-44, 1831 West Bus. Loop Phone 417-588-2574

This motel is allocating 40 rooms for the State Association. The rates listed are with a 10% discount. Please mention that you are with the Free Will Baptist Convention.

1 Person	1 Bed	\$26.89	+tax
2 Persons	1 Bed	\$28.56	+tax
2 Persons	2 Beds	\$31.39	+tax
3 Persons	2 Beds	\$34.39	+tax

Children 12 and under no charge
Free Coffee Anytime
Breakfast: Free Coffee & Rolls

Wyota Motel, City Rt. I-44, East Bus. Loop Phone 417-532-6171

1 Person	1 Bed	\$32.00	+tax
2 Persons	1 Bed	\$38.00	+tax
3 Persons	2 Beds	\$42.00	+tax

Children 12 and under no charge

Brentwood Motel, East of 2nd Exit Phone 417-532-6131

1 Person	1 Bed	\$26.95	+tax
2 Persons	1 Bed	\$26.95	+tax
2 Persons	2 Beds	\$31.95	+tax
3 Persons	2 Beds	\$34.95	+tax

Children special consideration.
When making reservations inquire.

Best Budget Motel, City Rt. I-44 East Phone 417-532-6111

1 Person	1 Bed	\$18.95	+tax
2 Persons	2 Beds	\$25.95	+tax
3 Persons	2 Beds	\$27.95	+tax

Children 12 and under no charge

As many of the **Gem** readers know, there are many motels in Lebanon. These are listed for your convenience.

I hope that you will take advantage of the Super 8 rate and convenience. It is new and located rather close to the Nelson Community Center.



Churches, People & Events

WONDERFUL YEAR AT VERDELLA CHURCH

The pastor of the Verdella Free Will Baptist Church, Rev. Curt Holland, writes, Praise the Lord for His wonderful mercy and grace. The year 1988 was a good year for the church. We started the year 1989 with a moving New Year's Eve Worship Service. A brief message on consecration was given, and we celebrated the Lord's Supper and observed another ordinance of the church, Feet Washing. Following this the congregation gathered in a circle of prayer.

During the circle of prayer each person lighted his candle from the candle of the person beside. Before the candle was lighted the person shared how he or she felt the Lord wanted to use them in the coming year. The Lord moved in a special way and many hearts were touched and tears of joy and commitment were shed.

We pray the Lord will use us in a special way this year, 1989. Our prayer is that we may always be found in the center of His will. We have a very excited group of young people who are wanting to take a Mission Trip to Brazil this summer. The group consists of teenagers and young couples in the church. If you would like for this group to come to your church and share their burden, please let us know. We would love to come and sing, give testimonies and share what the Lord is wanting us to do on this trip. If you could help us with the finances of the trip, we would greatly appreciate it. If you need us or if you can help us, please contact Pastor Curt Holland at 417-843-5613 or 843-5272.

VALENTINE'S BANQUET AT LEBANON

The Youth Sponsors and the Youth of the First Free Will Baptist Church at Lebanon, Missouri, held a Valentine's Banquet on Tuesday evening, February 14.

The banquet began, in the beautifully decorated Fellowship Hall, with a delicious dinner. It was a full-course meal for all ages.

Following the meal Connie Myers, a youth sponsor, and Rev. Clarence Burton, with the help of five couples, presented "love" in 5 stages of life. The couples that helped with the "Puppy Love" to "Rocking Chair Love" stages were: Heather Myers and Eric Boston, Erin Johnson and Phillip Day, Kayla Sheets and Donnie Anderson, Judy and Kenny Pearce, and Ann and Lehman O'Dell. A surprise guest sang for the couples and for the large crowd gathered for the occasion, "Through The Years".

Then, it was "Guessing Time". The young people had interviewed several married couples in the church. The questions asked were normally, "How did you meet?"; "Name a humorous event that happened during your married life"; and "How long have you been married?" The audience was to guess the couple whose interview was being read. It was revealed that some very unusual things had occurred before and after marriage. As someone said, "It is amazing how much fun it is to look at each other's unusual happenings."





Bro. Bill Knapp at pulpit, Bro. Brewington and wife, Peggy, in front

ORDINATION SERVICE

On Sunday, December 4, 1988, the Pleasant Ridge Free Will Baptist Church held an Ordination Service. Rev. Jerome Brewington was ordained to the ministry.

Brother Bob Cook, a deacon in the church, began the service by asking Rev. Bob Long to have the opening prayer. Brother Irvin Williams led the congregation in the song *Footsteps of Jesus*. Special music was provided by Nadine Horn, Beverly Percival, Kathy Cooke, Peggy Brewington, Don Cooke and Brent Moore, with Amy Cooke at the piano. Following the singing prayer was led by Brother Authur Horn.



Back Row - Brent Moore and Don Cooke. Front Row - Kathy Cooke, Peggy Brewington and Nadine Horn, with Amy Cooke at the piano.

The Ordination Message was delivered by Rev. Bill Knapp, moderator of the Niangua District Association. He used as his Scripture Selection, I Timothy 1:7, Ezekiel 33:9, and II Timothy 4:1-8.

The ministers of the Niangua Association gave a short talk following the message. Brother Dale McCurry led in the Prayer of Ordination.

UNITED CHURCH, WEST PLAINS WINS 1ST PLACE IN CHRISTMAS PARADE

It was the Monday night after the Thanksgiving Holiday, which turned out to be a very cold one. Especially if you were riding atop a float in the West Plains, Mo., Christmas Parade. Everyone was so excited as they met at the float. We had been working on this project for two weeks, sometimes until eleven o'clock at night - every night for some. About thirty gathered one night to stuff this long flatbed trailer. At that point, someone wondered, "Just who thought up this idea, anyway?" But when everyone boarded this beautiful float that night, everyone was proud and thrilled that someone had thought up the idea.

As we got on, turned on the lights, someone started playing the keyboard (which had a special mounting), the high manger scene atop the highest place on that gooseneck trailer was buzzing with the children playing their respective parts of the nativity, the big circular Christmas tree of carolers singing, and on the back part of the truck stood a Preacher and a Soldier carrying their shoulders high. In between them was a huge globe of the world turning as we moved. Some very good artists had drawn the countries, oceans, etc. on this world, and the lights set the whole float aglow. A big star atop the manger scene shown brightly as we started.

The whole message was UNITED IN CHRIST. Then came the announcement from the judges of the parade. The winners are — United Free Will Baptist Church. A scream came from the float and from those on the ground surrounding it. We did it — First Place Winner!

This was a first for the church, and we're so proud we worked hard. Our pastor, Rev. Glen Murray, and his wife, Rachel, were ecstatic. Smiles were seen everywhere. As we traveled down the street, around the town square, and continued on through our town, we all smiled proudly, waving to all on the sidewalks, stores, cars, and to anyone who would wave back. We simply forgot all the hard work, the cold nights, the one stormy one that we dreaded to get out into the weather. We each thanked the Lord in our own way for such a wonderful surprise.

And as we all came down off the float, started removing all the extra layers of clothing, the two pairs of socks, one coat, one sweater, two shirts, gloves, etc. . . . the whole van load of children and adults alike all started talking excitedly at the same time. "Wasn't this a good idea?" someone said in the background. A child said, "When can we do this again?", and everyone laughed. Seems like we got the biggest blessing. We wanted to be a blessing, but God gave each of us a special blessing for all the hard work. If your church has never tried something like this, you should try it. I guarantee you will get the biggest blessing of all.

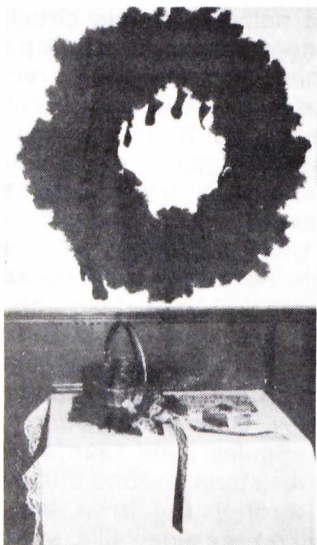
ORGANIZATIONAL SERVICE DATE SET AT BRANSON

We are praising the Lord at the Branson Free Will Baptist Church Mission, for a great year in 1988.

The Lord has blessed with so many wonderful things. We have several new families who have begun attending services. Usually, in the vacation time area our attendance goes down in the winter, but our attendance has been in the 70's and we had an attendance of 85 last Sunday, for which we are grateful and give God the glory. A fine teenager, Jason Webb, saved money he earned during the summer and bought a Christian and American Flag for the church.

On New Year's Eve we had our first Watch Service, with an attendance of 65. The Calvarymen Quartet provided the special music for the candlelight Communion and Feet Washing Service. On Thursday evening, April 28, an Organizational Service will be held. We invite everyone to attend. Pray for us that we will always work together in love and unity. If you are in the Branson area, come and worship with us.

MISSIONARY PROJECT BY W.A., MTN. GROVE CHURCH



Missionary Wreath

The Woman's Auxiliary reporter, Edna Carder, gives this good report of a Missionary Project by the Woman's Auxiliary at the First Free Will Baptist Church, Mtn. Grove.

The auxiliary president, Teresa Bradley, placed a beautiful large green wreath in the vestibule of the church, the first part of December. Attached to the wreath were several small red stockings. The stockings were to be taken by the members of the church and a missionary offering was to be placed in them. They were later returned to the treasurer for an offering for the missionaries. The project netted \$554.83 for the missionaries. Everyone rejoiced for the generous response to a very worthy project.

PRAY FOR YOUTH CAMP SESSIONS MISSOURI STATE ASSOCIATION NATIONAL CONVENTION

NOTE BURNING AT BLACK OAK

It was a very exciting day for Pastor Jack Day and the congregation of the Black Oak Free Will Baptist Church on Sunday, November 6, 1988. The church had a Note Burning Ceremony.

The pastor states, The Lord has blessed in a wonderful way the last two years, by being able to pay off the note on the money borrowed to build the new addition to the auditorium and the two new classrooms. More importantly we have been blessed with souls being saved and new members uniting with the church. We thank God for all the blessings He has bestowed upon us.



Pastor Jack Day and Church Board

Marge McCurry Home With The Lord

Marjorie Louise McCurry was born March 18, 1929, in Wichita, Kansas. She passed from this life to be at home with the Lord on January 29, 1989, after a long and courageous battle with cancer.

Marjorie Louise Howerton McCurry was a graduate of North High School in Wichita, Kansas, in 1947. She attended the American Business College and was a member of the Eastern Star. She and Dale McCurry were married on August 29, 1950, and lived in Wichita, Kansas, until 1968. They moved to Milan, Kansas, and while living there were blessed with two fine sons, George Allen and James Dean. The youngest son, James Dean, died on November 26, 1978.

Marge is survived by her husband, Dale McCurry; the one son, George Allen McCurry, his wife, Diane, and two precious grandchildren, Brandy Lee Marie and James Dale of Alfred, Maine; a mother-in-law, Mrs. Josephine McCurry of Wichita; three sisters-in-law, Mary Louise Libel, Geraldine McIntire and Sharon McCurry, all of Wichita; two brothers-in-law, Robert McCurry and Lester McIntire, both of Wichita; two nieces, four nephews, and a host of friends.

Marge was born into the family of God on January 9, 1972, at the Free Will Baptist Church in Milan, Kansas. She and her husband, Dale, labored faithfully with the church until moving to Festus, Missouri, in 1975. She and Dale joined the Bethel Church in Festus, and her membership was there at the time of her death.

Enough cannot be said about her love for children, and her burden to lead them to a saving knowledge of Jesus Christ. She held Child Evangelism and Good News Clubs in her home for many years. She labored faithfully with the children of all ages at the Missouri State Youth Camp, where she labored with her husband as he served as Camp Superintendent. Marge did this when she was not physically able. But she did it because she loved the Lord and loved children.

Marge worked in the Children's Church, in Sunday School, and while at the Bethel Church taught Kindergarten 4 at the Academy, and loved every minute of it. She also served as Church Secretary for many years at the church.

Marge attended church services as long as her health would permit and even at times when her health did not permit. But she went anyway, because she loved to be with God's people to worship and serve. When her health would not permit her to attend, she would insist no one stay with her, but rather "go to church".

Marge will be sadly missed by her loved ones and friends, but she will be fondly remembered for her Christian zeal and love by all who knew her.

It can be said of her that she "fought a good fight, she finished her course, henceforth there is laid up for her a crown of righteousness, which the Lord, the righteous Judge shall give her at that day, and not to her only but unto all them also that love His appearing". It can be said of Marge that she truly was a "soldier of the Cross".

Funeral services were held at Arthur's Colonial Chapel, Marshfield, Missouri, on Thursday, February 2, at 10:00 a.m. Rev. Ken Goff, her pastor, had the message. He was assisted by Rev. Clarence Burton, State Executive Secretary. Special music was given by Rev. Robert

Sharry, a former pastor, and a longtime friend. The Youth Camp Board members served as Honorary Escorts.

Graveside services were held at the Richland Cemetery in Douglas, Kansas. Rev. Robert Sharry held the Graveside service.

EDITOR'S NOTE: This article consists mostly of the Obituary. It was written by the family, and it reflects the love of her family and her friends. Marge was a fine and courageous Christian. She was a diligent worker and she worked as long as she could for the Lord and her friends. She will be missed by all of us!

Essentials of Evangelism

by Stanley Jones



It has been said that the public invitation is the most important part of the Worship Service. My observation has led me to conclude that it tends to be a time of confusion and defeat for many seeking souls. The reason being, the lack of altar workers or ill-trained workers.

I would like to cite some dos and don'ts for the would-be altar worker:

1. Don't "ride the circuit" around the auditorium from sinner to sinner, pleading with them to go forward. Do sit near the unsaved person during the service. Speak to him only as you are sure of the Spirit's leading.

2. Don't work in the altar unless you have been designated beforehand. Too many people in the altar causes confusion for the designated workers. They may not know who to deal with. Do pray for both the unsaved and the worker. But do it from your pew.

3. Don't "lay all over the person you are dealing with." A husband or wife, in the audience, may be angered by the physical contact. Do show concern, but you can do it without becoming overly familiar with the one at the altar.

4. Don't pray or talk the seeking soul into any non-understandable commitment. As a worker, you cannot pray their prayer of repentance, and save them. The reason many return time and time again to the altar, is because some worker prayed a quick prayer in their behalf and told them 'it was done.' Do lead the individual in his decision, but be sure that he understands what decision he is making.

5. Don't deal with problem causes at the altar, at the expense of your patient audience. Do use counseling rooms for difficult problems.

6. Don't 'shout' the victory cry and forget the needs of the "newborn." While the salvation of this lost soul may be the answer to much praying and effort, it is not the climax, but rather the beginning along a difficult path for the one just saved.

One lady, in a recent meeting I preached, was saved and wrote me a letter following her conversion. She said she did not understand going to the altar and being saved until her brother explained it to her and a well-trained altar worker aided her in finding victory over sin through Christ. The same testimony could be repeated by every seeking heart at the altar, with the help of a properly trained worker.

New President Hired At Hillsdale

The Hillsdale Board of Trustees announced the hiring of Rev. Jim Shepherd to be the next president of Hillsdale at the Oklahoma State Association at Enid in October. He assumed the office in January 1989. The official inauguration was planned to take place during the Bible Conference on February 28.

Brother Shepherd is a 1975 graduate of Hillsdale with a BA in Theology and a M. Div. from Southwestern Theological Seminary in 1979. He has pastored in Texas, Oklahoma and Missouri. He came to Hillsdale from the Central Free Will Baptist Church in Kansas City, Missouri, where he pastored for the past 2½ years.

It is important that all the alumni, friends, and supporters of Hillsdale keep President Shepherd, his wife Jerri, and his children Cassey, Kristin, and Courtney in their prayers as they begin this new ministry.

EDITOR'S NOTE: Congratulations! President Shepherd is a capable, caring and competent person who will serve well in his new endeavor as president of Hillsdale. He has my prayers and best wishes.



Looking Out My Parsonage Window

by Ve Ann Tilson

Missouri women are on the move . . . again! In December a new prayer circle was launched that united women from all over the state in prayer for missions, churches, pastors, and the overall work of the Free Will Baptists throughout the land. Since the first newsletter was published, letters have been received telling of many answered prayer requests. Letters have also arrived from several excited missionaries. Carol Pinkerton, missionary to the Ivory Coast, writes, "letters are welcome . . . as much as we enjoy them . . . we need prayers more." How many of us sincerely exercise the promise found in James 5:16? Pray one for another . . . the effectual fervent prayer of a righteous man **avaieth** much.

The main object of the prayer circle is to pray one for another. Through a bi-monthly newsletter, ladies are informed of urgent needs, requests and praise items of fellow workers. These ladies share a common bond. They are united in prayer for a common goal. The results will be tremendous.

Would you like to join the 46 ladies in the prayer circle? You only need to pick a prayer partner from your local church and then notify me to put your name on the list. The goal for the state is 100 women. Won't you be part of that number?

Prayer Circle
c/o VeAnn Tilson
Rt. 1, Box 80
Lonedell, MO 63060

World Missions Offering

April is **April 30, 1989**
Foreign **Foreign Missions**
Missions **Sunday**
Month

Missouri Tops Foreign Missions Goal for 1988

Nashville Tenn. — Free Will Baptists of Missouri did it! They topped the 1988 state goal in giving to foreign missions by \$33,775.06. A total of \$248,775.06 was given to overseas outreach by the state during the year.

This was significant in enabling the foreign missions department to surpass the 1988 budget. This was the first time since 1981 that the projected foreign missions budget has been met.

R. Eugene Waddell, general director of foreign missions, expressed his gratitude: "All of us in the foreign missions family appreciate your support. You dear Free Will Baptist people in Missouri did an outstanding job last year. Your generosity is making it possible for us to reach unreached people overseas and establish churches. You deserve high commendations for exceeding your faith goal."

Missouri's gifts have been very important to the Hannas, the Pinkertons, the McLains, the Lytles, Charolette Tallent, the Baileys, the Bunches, and the Reeves who have been enabled to minister in their fields due to such giving. A significant contribution has been made toward helping the Ron Moores reach the field.

Missouri Giving Drops to National Home Missions

Brother Roy Thomas writes, Free Will Baptists of the state of Missouri dropped \$21,665.60 in their giving to National Home Missions in 1988, from the previous year, 1987. Missouri gave \$134,059.75 towards its goal of \$153,000. This is \$18,940.25 below the goal. Other states were down in their giving, which resulted in the National Home Missions Department missing its budget by \$125,000. The National Home Missions Budget for 1988 was \$1,900,000.00.

I wanted to make you aware of this because I believe Home Missions is important, not only to win Americans to Christ, but to plant new churches and to help support all of our Free Will Baptist causes.

I am having to write some State Boards to let them know that we can no longer pay Joint Project workers because of insufficient funds. At this time Jim Mertz and Jim Williams are in the red almost \$10,000.

This is no time for God's people to retreat! We need to go forward. I want to challenge you to check the giving of your family and your church. May I encourage you to adopt a Home Missionary, a Missouri Joint Project worker, or the General Fund.

If each of us will do a little extra, Home Missions will succeed in reaching souls and building churches.

Urgently submitted,
Roy Thomas, General Director

My Converted Heart



Frances Bowman

I want to take this opportunity to thank all of our precious friends across the state for praying for me, for their telephone calls, and cards. You will never know how I love you all.

Until I went to the heart specialist, I had never heard of a heart conversion. They stop your heart and start it back in a different rhythm. This is the third time I have had this done. My family doctor is happy over the

success of this conversion, but I must take my medicine. There are some things I must do. I am trying so hard to do what I'm supposed to. In the two weeks that they thought I might not live I really prayed, and I hope I can share with you some things the Lord spoke to me about.

"My child," he whispered, "I converted your heart 30 years ago. I have wanted you to take medicine. Start every day with prayer. Read your Bible every day so I can speak to you. Don't forget you have an appointment with me at least three times a week. You always keep your doctor's appointment; you must keep your appointments with me. This will help to keep your converted heart. The heart conversion at Boone County Hospital cost you \$20,000. I converted your heart for nothing. I just want your love and service."

How easy it is to love Someone Who loved you enough to die for you and to serve such a great Paymaster. Please pray for me that I will love Him more and serve Him better, and that I will keep my converted heart.

We love you,
The Bowmans



Points for Pastors

by James McAllister

He's an usher and he enjoys it. No shame here. He likes serving his church, congregation, pastor and Lord. He likes being an usher. His position is important to him and he does it for the Lord.

Every Sunday morning he comes to church early so he can take his place as an usher. He always looks nice, he's serving the Lord. He wears a suit, and a big smile. As the busses roll in he always stands out on the porch of the church and acts like he's leading the singing, and the kids sing at the top of their voice for their friend — the usher.

He has a bulletin for every person who enters his door. He offers a big smile, a joke, a warm greeting, and a strong handshake. It's no wonder people like to come to "his" door. He makes them feel welcome. He's a door keeper in the house of the Lord.

He's done about everything for the Lord. In our Free Will Baptist Church he led the singing. In another he sang in a church quartet. He's sung in the choir, taught a class, tithed, visited, and prayed. He's always been counted faithful.

But now he's an usher, and he's glad. His wife is glad. She is proud of her husband, the usher. His pastor is glad. He is proud of this great man who serves the Lord as an usher. He's still a good singer and good enough to sing in the choir, but he's an usher.

God bless the usher who looks good, smiles big, loves people, serves the Lord, prays for the pastor, supports the church, and is faithful. May he always have this sweet Christlike spirit of servanthood.

A Special Letter From Jim Vallance FRIENDS NEEDED!

Pastor, your help is needed this year. I'm trying to find at least one of your men with an interest in the ministry of the laity among Free Will Baptist Master's Men. Will you help me locate him?

You know this work functions with the involvement of only a small number of our laymen. You also know the real frustration when you seek to involve your church folks in an area of ministry or activity when they fail to respond.

This year begins a membership enlistment campaign titled . . . **ABOVE ALL...TAKE THE SHIELD!** This year can be a pivotal point in the growth of the ministry of our laity. You have a vital part in the potential growth. I need you to nominate a layman from your church to be a "designated man". Of course, I recommend you first talk with him about this idea.

He will actually become an individual member of Master's Men. As such, he will receive all the news releases and ministry information from Master's Men. My desire is to find such men who will become a news-

sharer in your church. He can communicate prayer items . . . and tell of work opportunities like Master's Hand Projects.

Your designated man is very special. He will be a vital link in the matter of communicating from the Department to your church men.

Master's Men needs your friendship just the same as every layman in your church. Perhaps you have intended to do something to help the work in the past. Now is the perfect time to do something positive.

What's the catch? Master's Men needs the prayers and concern of your men. I simply want to share the happenings among our laity with your men. They need to know of Master's Men involvement in the Lord's work.

What's it cost? To quote a song, "It's cheap, but it ain't free!" A full year of materials is available for only \$10. **Just 84 cents a month** will provide all materials. That's a real bargain! Include a check with your nomination and mail it right after you talk with your designated man. You could even go one step further to show him and Master's Men your support. Join with him! \$20 from two men can help us tremendously expand the ministry of Master's Men among our people. Please help. Your prayers and support are vital.

Actually, your designated man and your membership are just a part of the four goals of the membership enlistment campaign. Underlying the desire for numerical growth is the reality of expanded ministry to our denomination through Master's Hands building projects, more men enlisted in the Discipleship study lessons, and a greater yieldedness of our laity to the will of our Master.

Pastor, you are vitally important! **Help us encourage men in your church to ABOVE ALL...TAKE THE SHIELD!**

State Competitive Activities to Meet at Columbia in May

The Missouri State CTS Competition will be May 12-13, 1989 at Stephens College, Columbia, MO. Stephens College has excellent facilities for the competitive activities. The competitive activities will follow the Friday evening and Saturday format used in the two previous years.

Campus dormitory facilities will be available at very reasonable rates for those staying Friday night. Meal tickets will be available for the dining hall. Arrangements have been made for special rates at a motel located one block away. Complete details and registration forms will be mailed later.

The rule put in effect for the 1988 Missouri State CTS Competition will be applied again this year: Each church may have no more than **two individual entries in each age of each category and each division** in Music & Arts. Each church may have no more than **one group entry (two or more people) in each age of each category and each division** in Music & Arts. There is no limit on how many **different** categories and divisions that an individual or church may enter. For example, each church is limited to only two entries in vocal solos in **each** of the Learner, Adventurer, Herald, Crusader, and Ambassador age categories. It may also enter only one vocal duet in **each** of the Learner, Adventurer, Herald, Crusader, Ambassador, and combination age categories.

This rule is intended to encourage you to explore all the various competitive activities open to your youth. Many new creative activities are now available in Music & Arts. The enclosed registration forms list over 50 different possibilities. There is some activity for every young person in your church from grade 1 through age 24.

The Guidelines for Competitive Activities and Music and Arts Festival (1986 revision) contain complete information on all competitive activities. The Guidelines and other competitive materials may be ordered from the Lebanon Bible & Book Store, Box 991, Lebanon, MO 65536 (417/532-9516).

Music and Arts entries in Categories 2, 3, 5, 6, 7 (Division III), and 8 (Division VII, VIII, IX, X) that include only **two** age groups must enter the **oldest** age category of the two ages. When 3 or more ages are included in one entry, they must enter the **combination** category.

The registration deadline is **April 1, 1989**. Additional details will be mailed to you later. If you have any questions, please contact one of the board members listed below.

Michael Walker
417/741-6474 Home
417/741-6157 Church

Curt Gwartney
314/431-5115 Home
314-431-3235 Church

Missouri State CTS Competition Bible Competitive Activities Registration Form

Please use a separate form for each entry. Additional forms are available upon request. Photocopies or handwritten forms are acceptable if the information is complete.

Church _____
 Address _____
 City, State, Zip _____
 Sponsor/Coach _____
 Address _____
 City, State, Zip _____
 Phone _____
 Pastor _____
 Phone _____

CHECK APPROPRIATE CATEGORY:

_____ Grade 1 — Bible Memorization
 _____ Grade 2 — Bible Memorization
 _____ Grade 3 — Bible Memorization
 _____ Grade 4 — Sword Drill
 _____ Grade 5 — Sword Drill
 _____ Grade 6 — Sword Drill

List information for each participant:

Name _____
 Address _____
 City, State, Zip _____
 Phone _____
 Birthday _____ Grade _____ Sex _____

_____ Tic Tac Toe
 _____ Bible Bowl

Name _____
 Address _____
 City, State, Zip _____
 Phone _____
 Birthday _____ Grade _____ Sex _____

REGISTRATION FEE:

Bible Memorization, Sword Drill — \$10.00 for each participant.

Bible Tic Tac Toe, Bible Bowl — \$15.00 for each team.

Name _____
 Address _____
 City, State, Zip _____
 Phone _____
 Birthday _____ Grade _____ Sex _____

Please mail this completed entry form with the proper fee, making checks payable to:

MISSOURI STATE SUNDAY SCHOOL AND CTS BOARD

Rev. Curt Gwartney
 P.O. Box 444
 Flat River, MO 63601

Phone: 314/431-5115 Home
 314/431-3235 Church

Name _____
 Address _____
 City, State, Zip _____
 Phone _____
 Birthday _____ Grade _____ Sex _____

ALL ENTRIES MUST BE IN BY APRIL 1

PARTICIPANT'S PLEDGE (to be signed by individual entry or team coach/sponsor):

I certify that the information on this form is correct and that I (each team member) meet the requirements for the above competition as laid out in the Guidelines for Competitive Activities and Music and Arts Festival and I (and my team) promise to conduct myself in a manner becoming to a Christian and representative of my church, district, and state.

 Signature of participant or sponsor

Missouri State CTS Competition Music & Arts Festival Registration Form

Each church may have **no more than two individual entries in each age of each category and each division** in Music & Arts. Each church may have **no more than one group entry (two or more people) in each age of each category and each division** in Music & Arts. There is no limit on how many **different** categories that an individual or church may enter. Please use a separate form for each entry. **ALL ENTRIES MUST BE IN BY APRIL 1.**

NAME OF PARTICIPANT OR GROUP _____
(list information about individual participants on the back of this form)

Church _____ Sponsor/Coach _____
Address _____ Address _____
City, State, Zip _____ City, State, Zip _____
Pastor _____ Phone _____

- 1) Check proper age
- 2) Check appropriate Category and Division

Entries in Categories 2, 3, 5, 6, 7, and 8 that include only **two** age groups must enter the **oldest** age category of the two ages. When 3 or more ages are included in one entry, they must enter the combination category.

Category One: Vocal Solo

Category Two: Vocal Ensemble

- ____ Div. I: Duet
- ____ Div. II: Trio
- ____ Div. III: Quartet
- ____ Div. IV: Quintet
- ____ Div. V: Sextet

Category Three: Chorale and Choir

- ____ Chorale (7-14)
- ____ Choir (15 or more)

Category Four: Instrumental

- ____ Solo (other than Keyboard)
- ____ Div. I: Stringed (Bowed)
- ____ Div. II: Stringed (Fretted)
- ____ Div. III: Woodwinds
- ____ Div. IV: Brass
- ____ Div. V: Percussion

Category Five: Small Instrumental Ensemble (maximum of 6)

- ____ Div. I: String (Bowed)
- ____ Div. II: String (Fretted)
- ____ Div. III: Woodwinds
- ____ Div. IV: Brass
- ____ Div. V: Combination

Age

- ____ A. Learner (grade 1-3)
- ____ B. Adventurer (grade 4-6)
- ____ C. Herald (grade 7-9)
- ____ D. Crusader (grade 10-12)
- ____ E. Ambassador (age 18-24)
- ____ F. Combination of A through E

Category Six: Large Ensemble, Bands/Orchestras

- ____ Div. I: Large Ensemble (7 to 14)
- ____ Div. II: Bands (over 14)
- ____ Div. III: Orchestra (over 14)

Category Seven: Keyboard

- ____ Div. I: Manual (Solo)
- ____ Div. II: Electronic (Solo)
- ____ Div. III: Keyboard Ensemble (2-6)

Category Eight: Oral Communication

- ____ Div. I: Extemporaneous Speech
- ____ Div. II: Dramatic Selection
- ____ Div. III: Poetry
- ____ Div. IV: Prose
- ____ Div. V: Puppet/Ventriloquism (Solo)
- ____ Div. VI: Interp. of Scripture
- ____ Div. VII: Puppets/Ventriloquism (Group)
- ____ Div. VIII: Dramatic Duo
- ____ Div. IX: Readers' Theatre
- ____ Div. X: Skits

Category IX and X entrants must mail his/her entry with the proper fee and entry form, no later than June 1, directly to:

National Youth Conference Office
P.O. Box 17306
Nashville, TN 37217

Category Nine: Creative Writing

- ____ Div. I: Poetry
- ____ Div. II: Short Story
- ____ Div. III: Newspaper
- ____ Div. IV: Essay
- ____ Div. V: Play or Skit
- ____ Div. VI: Song

Category Ten: Multi-Media

- ____ Div. I: One-Min. Radio Spot
- ____ Div. II: Ten-Min. Radio Spot
- ____ Div. III: 8 mm Film
- ____ Div. IV: Video
- ____ Div. V: Multi-Image

Category Eleven: Creative Arts

- ____ Div. I: Sculpture
- ____ Div. II: Painting
- ____ Div. III: Graphics
- ____ Div. IV: Ceramic/Pottery
- ____ Div. V: Textiles
- ____ Div. VI: Photography, B & W
- ____ Div. VII: Photography, Color

BACK SIDE OF THIS FORM MUST BE COMPLETED BY ALL PARTICIPANTS

THIS SECTION MUST BE COMPLETED BY ALL PARTICIPANTS.

Please check proper fee:

- _____ \$10.00 each participant: Categories I, IV, VII (Division I and II), VIII (Divisions I, II, III, IV, V, and VI), IX, X, and XI.
_____ \$15.00 each ensemble: Categories II, V, VII (Division III), VIII (Divisions VII, VIII, IX, and X).
_____ \$35.00 each large group: Categories III and VI.

Individual participants should complete line one; duets should complete lines one and two; trios lines one, two, and three; quartets lines one through four; quintets lines one through five; sextets lines one through six; chorales and large ensembles lines one through fourteen if needed. If more space is needed for choirs, attach an additional sheet.

	Name	Address	City, State, Zip	Grade just completed (If applicable)	Birthday	Phone Number
1						
2						
3						
4						
5						
6						
7						
8						
9						
10						
11						
12						
13						
14						
15						
16						
17						

Please mail this completed entry form with the proper fee, making checks payable to: **MISSOURI STATE SUNDAY SCHOOL & CTS BOARD**, Rev. Curt Gwartney, P.O. Box 444, Flat River, MO 63601. Phone 314/431-5115. **ALL ENTRIES MUST BE IN BY APRIL 1.**

PARTICIPANT'S PLEDGE (to be signed by individual entry or team coach/sponsor): I certify that the information on this form is correct and that I (each member of my ensemble, chorale, or choir) meet the requirements for the above competition as laid out in the Guidelines for Competitive Activities and Music & Arts Festival and I (and my ensemble, chorale, or choir) promise to conduct myself in a manner becoming to a Christian and representative of my church, district, and state.

Signature of participant or sponsor



The Durbins

SENIOR ADULT RETREAT STONECROFT CONFERENCE CENTER BRANSON, MISSOURI

MAY 9-11, 1989



Herman Hersey

REGISTRATION FORM — SENIOR ADULT RETREAT

Please Print

Name _____ Home Phone _____

Address _____ Church _____

* Do you want tickets for Silver Dollar City? (\$13.00) Yes _____ No _____

* Do you want the noon meal on Wednesday? Yes _____ No _____
(Minimum of 25 required to open kitchen)

Return Registration Form to:

Senior Adult Ministries Board, P.O. Box 991, Lebanon, Mo. 65536 by April 10, 1989.

May 9, Tuesday

1:30 Registration

5:00 Evening Meal

7:00 Congregational Singing

Get Acquainted

Durbin Family Sings

Skit

Message: Herman Hersey

8:45 Snack Time

May 10, Wednesday

8:00 Breakfast

*You may use this day as you desire
to visit Silver Dollar City or other
points of interest. **

Lunch (?) *

3:00 - 4:00 Estate and Trust Seminar:
Clarence Burton

5:00 Evening Meal

7:00 Congregational Singing
Durbin Family Sings
Message: Herman Hersey

8:45 Snack Time

May 11, Thursday

8:00 Breakfast

9:00 Congregational Singing
Skit
Planning Session

10:00 Snack Time

10:30 The Durbins
Message

11:00 Lunch

Bye Bye — The Lord Bless

SEMINAR COST:

Couple \$60.00

Single \$50.00

3 or 4 \$25.00 ea.

Financial Information

COOPERATIVE DISBURSEMENTS

DECEMBER 1988

18.50% Mo. State Home Missions	\$ 4,425.20
17.00% Executive Office & Gem	4,066.40
3.50% General Fund	837.20
6.50% Youth Camp	1,554.80
1.75% SS & CTS Board	418.60
1.75% CE Board	418.60
6.50% Senior Adult Ministries Board	1,554.80
5.00% Mo. State Ret. Program	1,196.00
30.50% Nat'l. Ministries, Hillsdale & California Christian College	7,295.60
24.00% Foreign Msn.	\$1,750.93
19.00% Nat'l. Home Msn.	1,386.16
18.75% FWBBC	1,367.93
18.75% Hillsdale	1,367.93
14.00% Executive Dept.	1,021.38
2.50% Layman's Board	182.39
.50% Radio & TV Com.	36.48
.50% Theological Com.	36.48
.50% Historical Com.	36.48

.50% Board of Ret. & Ins.	36.48
1.00% Calif. Christian College	72.96
9.00% State Office Building	2,152.81
Total	\$23,920.01

This ends the year 1988! We proclaim with the Psalmist "The Lord hath done great things for us, whereof we are glad..."! Daily, we have asked His blessings on His work, in our labor in Missouri and throughout our beloved denomination. He has blessed! May He continue to bless faithful pastors and churches as they continue to serve Him.

DECEMBER 1988 RECEIPTS COOPERATIVE

Oak Hill, Fredericktown	\$ 158.91
Trinity	659.82
Macedonia	20.00
Houston	266.01
Pleasant Home	343.71

Columbia	75.00
Monett	508.20
Number One	37.95
Merl's Chapel	127.01
Faith, Lemay	25.00
Waynesville	179.35
Hopewell	140.00
Hannibal	41.00
Sedalia	124.49
South Side	296.65
Hannon	252.10
Bailey Chapel	63.00
Hurryville	117.23
Carthage	80.00
Royal Oak	86.00
Rolla	40.58
Victory, Alton	160.00
New Harmony	11.78
Tyrone	67.70
Seymour	115.00
Riverview, IA	238.89

Mine La Motte	50.60
Terrill Road	61.61
Belton	451.28
Viburnum	201.38
Union Grove	160.00
Parkview	367.65
Marshfield	173.30
Fordland	334.22
Hazel Creek	414.90
Fredericktown, First	358.00
Harmony	335.00
Bethel, Festus	399.00
Mt. Zion, Gower	44.00
Springfield, First	416.70
Joplin	365.83
Pleasant Ridge	63.00
DeSoto	737.00
Calvary, Conway	460.00
Rock Chapel	225.82
Flat River, First	443.18
Mt. Pisgah	388.00
Lebanon, First	403.80
Stockton	65.95
Thayer	354.00
Potosi	197.00
Pleasant Home	300.82
Mountain Grove	500.00
Leadington	400.00
Freeman Chapel	228.47
United, W.P.	503.08
West Plains, First	233.40
Wolf Creek	424.36
Lone Star	35.00
Eastern Gate	260.00
Berean	15.00
Cabool	244.30
Copper Mines	229.44
New Home	94.42
Black Oak	158.01
Central	959.12
Berkeley	1,784.10
Grant Avenue	586.44
Kirksville	13.33
Pleasant Hill	48.30
Thayer	443.00
Hickory Grove	47.11
Willow Springs	208.52
Number One	34.25
Cuba	315.60
Wilderness	274.00
Farmington	1,000.00
Carthage	100.00
Myrtle	368.39
Oak Hill, Fredericktown	98.04
Salem	30.00
Hartville	224.63
Victory Hill	127.65
Joplin	324.00
Koshkonong	200.00
Unity	202.75
Cape Girardeau	576.08
Total	\$23,920.01

MISSOURI HOME MISSIONS

Eastern Gate	\$ 192.50
Trinity	352.30
Columbia	8.25
Monett	50.00
Richwoods	20.00
South Side	15.00
Hannon	426.05
Carthage	10.00
New Harmony	58.92
Calvary Fellowship	110.49
Belton	25.00
Parkview	5.00
O'Fallon	100.00
Marshfield	27.33
Fordland	167.50
Bethel, Festus	50.00
Southeast District	100.00
Joplin	40.00
Pleasant Ridge	10.00
Leadington	85.00
DeSoto	50.00
Flat River, First	15.00
Lebanon, First	806.88
Thayer	316.90
Unity	50.00
Mountain Grove	22.00
United, W.P.	34.61
West Plains, First	9.00
Oak Hill, Union	15.00
J.W. Rader	25.00

Central	49.00
Grant Avenue	9.00
Grace	45.00
Thayer	108.90
Farmington	115.00
Myrtle	44.00
Total	\$3,568.63

NATIONAL HOME MISSIONS

Trinity	\$ 412.30
Columbia	14.73
Monett	27.00
Viburnum	53.00
Richwoods	34.00
Blue Springs	10.00
Clifford Hoover	5.00
Carthage	5.00
Viburnum	43.00
Parkview	55.00
Bethel, Festus	30.00
Leadington	100.00
DeSoto	200.00
Rock Chapel	151.34
Flat River, First	109.32
Mt. Pisgah	100.00
Thayer	75.00
Pleasant Home	29.95
Mountain Grove	75.00
Leadington	50.00
United, W.P.	45.00
Parkview	20.00
Wolf Creek	10.00
Fred Clayton	10.00
Buffalo, First	50.00
Central	408.15
Grant Avenue	21.00
Robert Keith	10.00
Grace	105.00
Thayer	125.00
Richwoods	22.00
Farmington	139.50
Carthage	5.00
Myrtle	140.00
Beacon	100.00
Total	\$2,790.29

HILLSDALE COLLEGE

Hannon	\$ 50.00
Calvary Fellowship	35.75
Thayer	60.00
Central	55.79
Grant Avenue	8.00
Beacon	225.00
Farmington	120.00
Total	\$554.54

FOREIGN MISSIONS

Niangua	\$ 30.00
Trinity	150.00
Pleasant Home	142.96
Columbia	14.74
Monett	563.97
Viburnum	107.00
Richwoods	56.00
Merl's Chapel	100.00
Blue Springs	60.50
Sedalia	318.00
South Side	242.00
Hannon	252.10
Brent Thompson	25.00
Clifford Hoover	30.00
Carthage	40.00
New Harmony	58.93
Calvary Fellowship	723.32
Tyrone	25.50
Union	50.00
Belton	25.00
Viburnum	107.00
Parkview	244.05
Marshfield	20.00
Houston	94.00
Fordland	185.76
Bethel, Festus	95.00
Joplin	70.00
Pleasant Ridge	30.00
Leadington	200.00
DeSoto	300.00
Rock Chapel	1,102.73
Flat River, First	88.64
Mt. Pisgah	175.00
Mt. Pisgah	175.00
Lebanon, First	85.00
Thayer	45.00
Pleasant Home	85.00
Unity	278.07
Mountain Grove	192.00
Leadington	63.00
Pleasant Ridge Auxiliary	20.00

Freeman Chapel	294.00
United, W.P.	134.61
West Plains, First	200.80
Parkview	50.00
Black Oak	10.00
Central	414.09
Grant Avenue	435.80
Kirksville	5.00
Grace	16.00
Thayer	45.00
Cabool	104.48
Richwoods	46.00
Cuba	212.06
Wilderness	79.00
Farmington	626.00
Carthage	50.00
Myrtle	125.00
Beacon	330.00
Joplin	20.00
Koshkonong	10.00
South Side	225.00
Total	\$10,103.11

YOUTH CAMP

Trinity	\$ 10.00
Hannon	15.00
Victory, Alton	25.00
Calvary Fellowship	39.00
Fordland	20.00
Bethel, Festus	25.00
Leadington	20.00
DeSoto	50.00
Mt. Pisgah	20.00
Thayer	60.00
Mountain Grove	10.00
Parkview	10.00
Buffalo, First	50.00
Central	17.31
Willow Springs	10.00
Myrtle	24.00
Hartville	10.00
Bethel, El Dorado	15.00
Total	\$430.31

FWBBC

Calvary Fellowship	\$ 35.75
Leadington	20.00
DeSoto	35.00
Thayer	50.00
Freeman Chapel	150.00
Parkview	10.00
Central	45.79
Farmington	120.00
Beacon	225.00
Total	\$691.54

CHILDREN'S HOME

DeSoto	\$50.00
Myrtle	1.00
Total	\$51.00

NAT'L. BOARD OF RET. & INS.

Grant Avenue	\$1.00
--------------	--------

JOHN MCCLURE ACCOUNT

Central	\$ 30.00
Flat River, First	44.32
Thayer	24.00
Grace	25.00
Farmington	10.00
Total	\$133.32

COOPERATIVE DISBURSEMENTS

JANUARY 1989

18.50% Mo. State Home Missions	\$ 5,012.07
17.00% Executive Office & Gem	4,605.69
3.50% General Fund	948.23
8.50% Youth Camp	2,302.84
1.75% SS & CTS Board	474.12
1.75% CE Board	474.12
4.50% Senior Adult Ministries Board	1,219.15
5.00% Mo. State Ret. Program	1,354.61
30.50% Nat'l. Ministries, Hillsdale & California Christian College	8,263.15
24.00% Foreign Msn.	\$1,983.16
19.00% Nat'l. Home Msn.	1,570.00
18.75% FWBBC	1,549.33
18.75% Hillsdale	1,549.33
14.00% Executive Dept.	1,156.84
2.50% Layman's Board	206.58
.50% Radio & TV Com.	41.32
.50% Theological Com.	41.32
.50% Historical Com.	41.32
.50% Board of Ret. & Ins.	41.32
1.00% Calif. Christian College	82.63
9.00% State Office & Bookstore Bldg.	2,438.30
Total	\$27,092.28

This is the first month of the year 1989. We begin this year with a complete confidence in God that He will continue to bless this year as He has in the past. As faithful Christians give may faithful churches give that the gospel may be preached. We can trust the Lord for souls to be saved.

JANUARY 1989 RECEIPTS COOPERATIVE

Beacon	\$ 1,349.00
West Plains, First	239.00
Richwoods	344.00
Friendship	500.00
Kirksville	16.83
DeSoto	785.00
Mill Creek	187.78
Freeman Chapel	388.93
Marshfield	189.50
Grant Avenue	656.21
Union Light	213.50
Leadington	370.00
Harmony	370.00
Berean	8.00
Mt. Pisgah	139.00
Verdella	144.41
Neosho	142.50
Faith & Hope	55.38
Bootheel Association	12.38
New Rock Springs	99.00
Crossroads	100.00
Cope	24.20
Parkview	398.41
Lingo	88.15
Lebanon, First	463.05
Columbia	75.00
Bailey Chapel	47.00
Hopewell	139.00
Mine La Motte	48.97
Rock Chapel	305.53
Rolla	32.56
Jones Chapel	141.40
Bethel, Festus	344.00
Victory, K.C.	336.48
Mountain Grove	884.21
Flat River, First	479.35
Stockton	67.65
Waynesville	116.25
Merl's Chapel	173.50
Mt. Zion, Gower	41.20
Viburnum	206.67
Union Grove	114.00
Pleasant Ridge	62.00
Kingsway	306.04
Royal Oak	99.00
Sedalia	85.06
Seymour	114.20
Faith, Lemay	25.00
Hannibal	31.00
Fredericktown, First	418.00
Hurryville	132.25
Springfield, First	433.40
Black Oak	170.44
Fourth	125.00
Alton	225.00
Victory, Alton	177.00
United, W.P.	543.77
Hannon	317.80
Oak Grove, Texas Co.	35.00
Belton	227.18
Terrill Road	82.53
Trinity	774.98
Olivet	800.00
Beacon	2,000.00
Fordland	370.58
Pleasant Home	313.24
Macedonia	20.00
Cabool	226.35
Pleasant Hill	49.37
Eastern Gate	369.00
Eastern Gate	236.00
Copper Mines	358.39
Wolf Creek	260.70
Crossroads	100.00
Happy Home	112.80
Happy Home	87.97
Twin Oak	1,226.75
St. Francois Association	18.00
Lingo	50.00
New Rock Springs	69.00
Grace	780.00
Jones Creek Road	169.84
Monett	528.56
Myrtle	195.72
New Life, Fellowship	649.65
Oskaloosa	35.20
Riverview, IA	220.95

Kingsway	256.89
Willow Springs	294.47
Purdy	490.00
Salem	30.00
Number One	50.06
Victory Hill	103.10
Unity	298.87
South Fremont	556.00
Cape Girardeau	483.84
Total	\$27,092.28

YOUTH CAMP

New Rock Springs	\$ 20.00
Bethel, Festus	25.00
Mountain Grove, First	10.00
Parkview	10.00
Victory, Alton	25.00
Hannon	15.00
DeSoto	50.00
Calvary Fellowship	39.00
Mt. Pisgah	10.00
Verdella	10.00
Leadington	20.00
Trinity	10.00
Olivet	50.00
Fordland	20.00
Buffalo, First	50.00
Bethel, El Dorado	15.00
Myrtle	33.00
Willow Springs	10.00
Total	\$422.00

FOREIGN MISSIONS

Indian Creek Association	\$ 2,222.38
Parkview	228.00
Lebanon, First	120.00
Columbia	15.00
Rock Chapel	46.00
Union	70.00
Bethel, Festus	90.00
Victory, K.C.	167.00
Mountain Grove	189.69
Flat River, First	95.88
Merl's Chapel	100.00
Pleasant Ridge	30.00
Sedalia	20.60
Parkview	50.00
Carl Layman	10.00
Fourth	90.00
United, W.P.	118.75
Brent Thompson	25.00
Hannon	600.00
Hannon	417.80
Doyle & Nita Akeman	10.00
Oak Grove, Texas Co.	30.00
Belton	339.00
Beacon	3,013.00
West Plains, First	67.00
Jean Francis	20.00
Kirksville	45.00
DeSoto	300.00
Freeman Chapel	299.50
Marshfield	20.00
Blue Springs	65.00
Grant Avenue	438.66
Leadington	63.00
Calvary Fellowship	584.56
Mt. Pisgah	175.00
Verdella	251.27
Leadington	200.00
Trinity	88.50
Olivet	100.00
Beacon	1,233.00
Fordland	228.00
Pleasant Home	135.00
Rock Chapel	133.00
Lead Hill	120.00
Sedalia	250.00
Viburnum	112.00
Martinstown	100.00
Grace	23.00
Monett	1,345.00
Myrtle	101.00
South Fremont	160.00
Willow Springs	52.52
Richwoods	51.00
Niangua	77.00
Total	\$14,936.17

NATIONAL HOME MISSIONS

Indian Creek Association	\$ 997.29
Parkview	43.00
Lebanon, First	27.00
Columbia	15.00
Rock Chapel	151.71
Bethel, Festus	30.00
Victory, K.C.	70.00
Mountain Grove	65.00

Flat River, First	77.94
Sedalia	20.60
Parkview	20.00
United, W.P.	60.00
Hannon	205.00
Kirksville	10.00
DeSoto	200.00
Blue Springs	10.00
Grant Avenue	21.00
Leadington	25.00
Mt. Pisgah	50.00
Verdella	15.00
Leadington	100.00
Trinity	75.00
Beacon	270.00
Fordland	10.00
Fred Clayton	10.00
Buffalo, First	50.00
Wolf Creek	10.00
Viburnum	53.00
Crossroads	30.00
Grace	105.00
Monett	15.00
Bob & Glenda Keith	10.00
Myrtle	121.00
South Fremont	17.00
Richwoods	55.00
Total	\$3,044.54

FWBBC

Parkview	\$ 10.00
DeSoto	35.00
Freeman Chapel	50.00
Calvary Fellowship	35.75
Leadington	20.00
Fordland	42.00
Total	\$192.75

HILLSDALE COLLEGE

Hannon	\$50.00
Grant Avenue	5.00
Calvary Fellowship	35.75
Total	\$90.75

MISSOURI STATE MISSIONS

Indian Creek Association	\$1,143.30
Parkview	5.00
Lebanon, First	127.25
Columbia	8.25
Bethel, Festus	45.00
Victory, K.C.	10.00
Mountain Grove, First	22.00
Pleasant Ridge	10.00
J.W. Rader	25.00
Fourth	15.00
United, W.P.	18.75
Hannon	358.90
Belton	30.00
West Plains, First	15.00
DeSoto	50.00
Marshfield	28.95
Grant Avenue	26.00
Union Light	18.00
Leadington	10.00
Southeast District	50.00
Calvary Fellowship	110.49
Houston	75.75
Oak Hill, Union	24.00
Leadington	80.00
Trinity	30.00
Fordland	34.00
Pleasant Home	37.57
Eastern Gate	30.00
Crossroads	7.00
Springfield Area Association	36.58
Grace	45.00
Monett	88.00
Oskaloosa	28.60
Myrtle	48.00
St. Louis District Association	100.00
South Fremont	102.00
Richwoods	10.00
Total	\$2,903.39

CHILDREN'S HOME

DeSoto	\$50.00
Myrtle	85.76
Total	\$135.76

JANELL BILLOWS

Monett	\$40.00
--------	---------

JOHN McCLURE

Victory, K.C.	\$ 5.00
Flat River, First	47.94
Verdella	10.00
Grace	25.00
Monett	50.00
Total	\$137.94

Calendar of Events — 1989

FAMILY LIFE/SINGLES RETREAT

March 31-April 1, Breckenridge Inn. Cost: Couple - \$70.00, Single - \$45.00.

SENIOR ADULT RETREAT

May 9-11, Stonecroft Conference Center, Branson, MO.

STATE CTS COMPETITIVE ACTIVITIES

May 12, 13, Stephens College, Columbia, MO

MISSOURI STATE ASSOCIATION & WOMAN'S

AUXILIARY, June 5-8, Nelson Community Center, Lebanon, Mo. (A Dedication Service for the new State Office and Bookstore Building will be held at this meeting.)

YOUTH CAMP SESSIONS

Teens: Group I, June 18-23; Group II, June 25-30

Pre-Teens: Group I, July 30-Aug. 4; Group II, Aug. 6-11.

NATIONAL ASSOCIATION, WNAC, NYC

July 16-20, Tampa, Florida.

MISSOURI WOMAN'S AUXILIARY RETREAT

August 25, 26, Stonecroft Conference Center.

ALL BOARDS MEETING—PASTORS/LAYMEN

RETREAT, September 25, 26, Youth Camp, Niangua.

NOTE: Necessary information will be mailed out at the appropriate time by the ones sponsoring these events. This only gives an overview of the State Calendar.

Youth Look

by Ann (Cochran) Poletti

In Matthew chapter 9, the Bible speaks of a woman who had been very sick for twelve years. As Jesus was walking with his disciples to perform the miracle of raising the ruler's daughter from the dead, this woman silently fell in behind Jesus' steps to touch the hem of His garments. The Bible tells us that this woman had thought if she could touch his garments — if only the hem — she would be well.

In my mind, I picture a woman who had suffered several years of her life and had told the doctors, "I'll try anything if it means I may be well or relieved of some suffering." In all the doctors' man-made resources there was no relief supplied. That's when Jesus came by.

It was probably rather embarrassing for her to follow Jesus, with all the people around, and attempt to touch the very bottom of His garments. Maybe she made several attempts before she actually made contact, or possibly she had to crawl; however, she was determined that **this** was her cure.

This gesture touched Jesus. He turned to the woman and told her that her faith — not the touch of His clothes — had healed her. The fact that she knew Jesus had so much healing power within Him prompted her to touch His garment. She did and He healed.

This story shows us if we believe upon Christ totally, our faith **in Him** will meet all our needs. We need to give Christ room to "make us whole."

New Hymnbook Price To Increase April 15

Randall House Publications states, Churches that plan to purchase the new Free Will Baptist Hymnbook, 'Rejoice', should purchase before April 15. The Executive Office had to borrow money in order to publish the hymnbook. Of course they had to pay interest on this borrowed money. In order to recover the cost of this interest the price will be increased from \$7.98 to \$9.98 effective April 15, 1989.

Note

For Sale: Church Bus, 60 passenger, 1968 Chevrolet. Clean inside, heaters work, engine overhauled. \$1,200. Price negotiable. Call 417-865-6617. First Church, Springfield, Mo.

Dean's List Free Will Baptist Bible College

"A" Honor Roll

Debbie Maggart Robertson (Jr.), St. Joseph, MO.

"B" Honor Roll

Donna Reeves (Sr.), Farmington, MO; Jeff Robertson (Sr.), St. Joseph, MO; Barbara Warner (Sr.), Fredericktown, MO; Kevin Skiles (Jr.), Festus, MO; Russell Ball (Soph.), Monett, MO; Kenny Simpson (Fr.), Farmington, MO; Terry Skiles (Fr.), Festus, MO; Greg Smith (Fr.), West Plains, MO; Special student, Allen Pointer, Springfield, MO.

MO. STATE ASSOC. OF
FREE WILL BAPTISTS
200 West Commercial
Lebanon, Missouri 65536

NON-PROFIT
BULK RATE
U.S. POSTAGE
PAID
INDEP. MO. 64050
PERMIT NO. 331

HARROLD HARRISON
P.O. BOX 17306
NASHVILLE TN 37217

TO INSURE UNINTERRUPTED DELIVERY OF YOUR GEM
PLEASE INFORM US IMMEDIATELY OF YOUR NEW ADDRESS