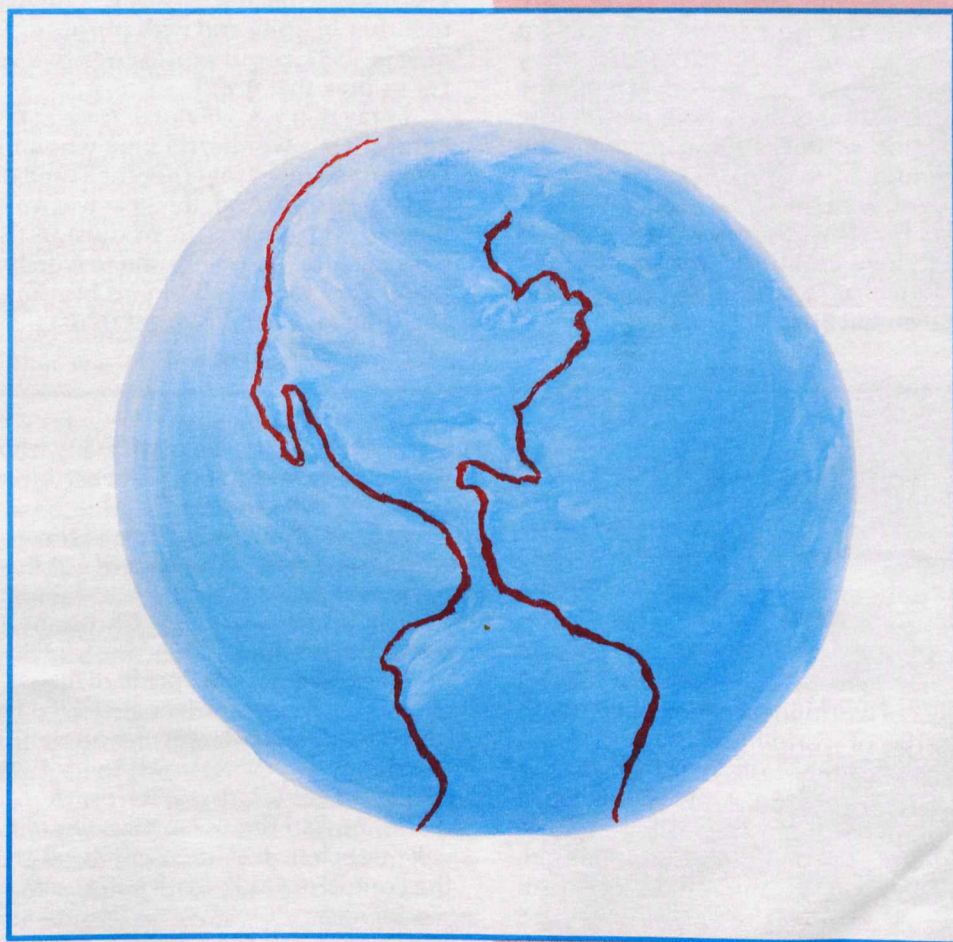
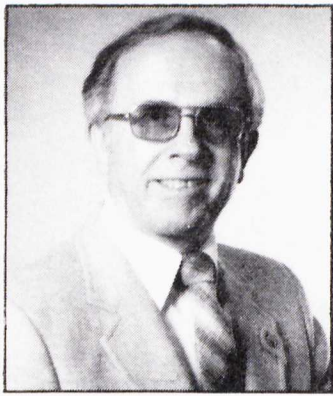


THE FREE WILL BAPTIST GEM

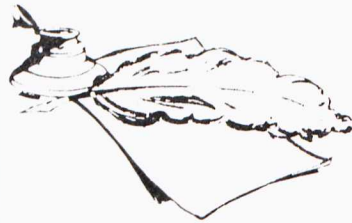
Volume 61, No. 9, September 1991



"...the earth shined with His glory." *Ezekiel 43:2*



Clarence Burton



From
The Desk of
The

Executive Secretary

What a wonderful State Convention! The Lord blessed from the beginning to the dismissal.

Before I write some remarks regarding the State Convention, let me make a few remarks concerning the Missouri State Woman's Auxiliary, which is a vital part of the State Association and Convention. This organization has been blessed of the Lord, and as He blesses they continue to labor faithfully for Him. The services were well attended. The ones on the program did an excellent job. Missionary appointees to Brazil, Curt and Mary Holland, spoke with love and fervor concerning the burden they have for Brazil and the whole world. The music under the direction of Becky Gwartney and the special music was beautiful.

Rose Mertz, president, with her usual capable leadership ability, and those officers working with her handled the services well - with love and understanding. Thank God for the Woman's Auxiliary and the strong emphasis they continue to place on missions.

Now, concerning the Missouri State Association Convention. The preachers developed the theme "Lift Up Your Eyes - Look On The Fields" with power and persuasiveness. The preaching by Rev. Lloyd Durbin, Rev. Max Courtney, Rev. Gary Mitchner, and Rev. Roger Hogan (the order in which they preached) was done with simplicity and effectiveness. It was amazing to hear them draw thoughts and make applications from the suggested scripture, John chapter four, that oftentimes is overlooked. On Wednesday evening as Brother Hogan was preaching, I wished that the convention could extend at least through another day or two.

The congregational singing and the special singing was a spiritual uplift! Rev. Jerry Pilgrim directed the singing with his wife Mirion and Bev Garner playing the instruments. What a blessing they were to the convention. The special singers and musicians (I dare not try to name all) were used of the Lord to bless our hearts with great singing. Everyone on the program did a great job! Rev. Wayne Phillips and Rev. Jerry Fields gave very challenging devotional messages. Sometimes I think that it would be nice to have a State Convention every month.

The Business Sessions went smoothly under the direction of our moderator, Rev. Cody Freeman, and the other officers of the State Association. The reports from the five standing boards and the General Board were well received. This reflects that the Missouri State Association is working together in unity and with purpose. The year that we are now in, 1991, could well exceed that which we did in 1990. Let us pray that it will.

I pray that we will never look at the State Convention lightly. It is a wonderful time when folks, preachers, and laymen can meet together for a time of worship, business, and fellowship. And, this year was no exception - we were blessed with several from outside the state of Missouri who came to fellowship and to worship the Lord with us. I thank God for His abundant blessings on our labor. We can truly say, "God is good to us!"

Essentials of Evangelism

by Stanley Jones

When personal or public revival begins to arise, the darkness of worldliness will be exposed. Exposure demands confrontation. But, in order to confront and deal with worldliness, we must be able to identify it. In I John 2:15-17, the subject of worldliness is identified for us. There are three categories of worldliness.

First, there is the "lust of the flesh." Lust means the unchecked or undisciplined appetite. And, in this case, it refers to those appetites of the flesh. The fleshly appetite itself is not wrong, but only when it goes undisciplined. This could include hunger, sex, or any other God given appetite. It is obvious to me, these appetites go

unchecked in the lives of many church going people, when they are given to everything from gluttony to seductive styles in dress.

Second, there is the "lust of the eye." This category of worldliness covers the area of our lives sometimes called covetousness. We see it - we want it! This undisciplined drive is enslaving many Christians to materialism and deep indebtedness.

Third, there is the "pride of life." This is the unhealthy elevation of one's personal worth. This self inflation can ultimately lead to the secular humanist and New Age "self worship."

Let us not kid ourselves. A refusal to deal with worldliness in the personal and public life of the church will quench revival fire. Only as we give ourselves anew to the control of God's Spirit and His Word can we overcome worldliness.

All items for publication must be in the hands of the editor *no later than the 10th of the month* preceding the issue month. Business Office: 202 West Commercial, Lebanon, Missouri 65536. Clarence Burton, Editor. Address all correspondence relating to the GEM, including subscription and mailing information, to the above address. The sermons and articles published in the GEM represent the personal views of the authors and not necessarily the views and policies of the Missouri State Association of Free Will Baptists or of the editor. Subscription rates: Single subscription, \$4.50 per year, cash in advance. Church Plan \$4.00 per year consisting of five subscriptions or more. The Church Plan will continue until it is canceled by the church. This magazine is published monthly.



Reports from the Churches



Auditorium and Educational Building

EDUCATIONAL BUILDING DEDICATED AT MONETT —

On Sunday, August 11, 1991, the First Free Will Baptist Church in Monett, Mo., held a Dedication Service for the new Educational Building. On June 19, 1990, a fire destroyed the former Educational Building.

The Morning Worship Service began with a feeling of excitement as the pastor, Rev. Ken Dodson, gave a warm welcome to the large congregation of members and friends of the First Free Will Baptist Church. Rev. Ken Turner, long time member of the church and a leader in the Free Will Baptist denomination, gave the invocation.

The pastor recognized several special guests who were instrumental in building. Among those were Max Jordan, general contractor, and Joe Johnson who did the cabinets, serving counters, and finish work in the kitchen and dining area. Max Jordan presented the keys to the chairman of the Trustee Board, Monte Terry.

The New Educational Building provides 14 classrooms, Children Church Area, pastor's study, spacious kitchen and dining area, additional restrooms, and a beautiful "Window Cross" that was dedicated to the memory of Doris Weston.

The Dedicatory Message was delivered by Rev. Clarence Burton, State Executive Secretary. He complimented the pastor and the church for a job well done! He stated that the response of the church in raising the needed money, plus the many hours of donated labor, could be likened to Children of Israel, who brought more than enough to build the Tabernacle. He mentioned that only Heaven will reveal the ultimate good that will result in the teaching and training that will be done in the beautiful Educational Building.

The pastor baptized five who followed the Lord in Believer's Baptism, and the church received six into membership at the close of the service.

While preparing for the Baptismal Service, three members of the church: Kenny Salsman, Janette Smith, and Chris Paris, gave meaningful testimonies concerning memories of the past and hope for the future.

The ladies of the church served a delicious dinner in the beautiful dining area. It was a great occasion and is reflective that the First Free Will Baptist Church is actively involved in preaching the gospel, winning the lost, and edifying the Christians. The people were joyous and thankful for the blessing of God, and as someone said, "The Lord hath done great things for us, whereof we are glad!"



The Pastor and Choir



Dedication Service



Church Boards with Pastor



Enjoying Dinner



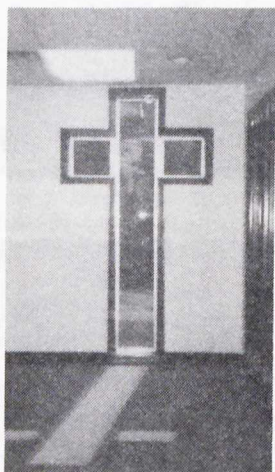
The Pastor - Ken Dodson

(additional photos on page 4)

(continued from page 3)



Rev. Ken Turner



The Cross Window in Memory of Doris Weston.



Kenny, Janette, and Chris



Sue Turner (soloist) and JoAnn Thomas (musician).



Paula Dodson (pastor's wife) at serving counter.

BETHEL AT EL DORADO SPRINGS HAS GREAT REPORT

— We are giving God the glory for the good growth that we are experiencing at Bethel Church, writes the pastor, Rev. Warren Hall.

Our Sunday School, led by our superintendent, Sonny Smith, continues to increase in averages over last year. We give credit to each member that has prayed, visited, and brought friends to worship with them at Bethel.

We are glad to say that God is still in the "soul-winning business." On June 23, 1991, we went to the Marshal's home, where ten precious souls followed the Lord in believer's baptism. We praise the Lord for each soul and each worker that had a part in preparing these souls for the Kingdom of God - Heaven. God does the saving, but He has left man to be the tools for preparing and tending to the souls of the Kingdom.

We closed the month with our Annual Homecoming Service on June 30. The Glory Bound Quartet was there for the special afternoon service, and that evening the church hosted a singing for the city of El Dorado Springs.

The Lord continues to bless. We shall be able to say that we have "Doubled in a Decade" by the end of this year. With the prayers and support of the members of the Bethel Church, our desire is to continue growing in the Lord.

Testimonial Prayer



Father, tonight I come
Praising you on high,
For saving a soul such as mine,
And unto you I cry.

Sometimes the words may be awkward
But Father, they come from the heart,
Humble and heavy hearted, here I am
Trying to do my part.

Seeing your children around me
Sharing their pain and sorrow,
Knowing you'll never leave them
Knowing you'll be there tomorrow.

When I am heavy laden
And can't seem to take another step
I come to my knees to you, Father,
And my burden is layed to rest.

Lord, I'm sorry for my shortcomings
When I stumble, and then fall
Thank you, dear Father
For the strength and hand,
That guide me through it all.

by
Sharon L. Greer
First Freewill Baptist Church
Waynesville, Mo.

BIBLE INSTITUTE AT FIRST CHURCH, SPRINGFIELD — Rev. Max Courtney, pastor, First Free Will Baptist Church, Springfield, Mo., has announced that the church will be offering Bible Institute Studies this fall.

The courses offered will be Theology, Ministerial Ethics, Systematics, and Teacher Training. These will be offered as 3-hour courses, with a certificate given at the completion of the course.

Three teachers will be teaching the studies: Rev. Tony Butcher, Rev. Mike Butcher, and Rev. Max Courtney.

Additional information may be received by calling the church, 417-869-2126.

GROUNDBREAKING AT EASTERN GATE — On Sunday, July 14, 1991, the Eastern Gate Free Will Baptist Church held a Groundbreaking Service for an Educational Unit that is being added to the present facilities, writes the pastor, Rev. Jeff Daniels.

The building will consist of six classrooms, a pastor's study, nursery, and bathrooms. This will provide the much needed additional classroom space, with a more accommodating location for the pastor's study and the nursery.

The building project will also provide a large foyer and create more space in the auditorium.

Rev. and Mrs. Daniels are anticipating and trusting the Lord for a fine and productive ministry with the Eastern Gate Church.



Eastern Gate Congregation



Pastor and Church Board



Pastor and Church Board

100TH ANNIVERSARY AT VERDELLA — On Sunday, October 20, 1991, the Verdella Free Will Baptist Church, near Liberal, Mo., will hold a 100th Anniversary Service. The Planning Committee, with the pastor, Rev. Don Anderson, is planning many activities for this special occasion. They are anticipating some former pastors, some former members, and many friends of the church to meet with the Verdella Church for this important day. Everyone is invited to attend and enjoy the blessings of the Lord.

The Lord has been doing some wonderful things at the church, writes the pastor. Since mid-April, twelve souls have received Christ as Saviour. Four made profession of faith in Sunday School, two in Children's Church, two in Vacation Bible School, and four at Youth Camp (pre-teen week).

The Wednesday Evening Youth Group Meetings are growing and going strong, especially having only begun in May. The Youth Sponsors are Randy and Regina Sprinkle and Kayla Anderson, the wife of the pastor. Randy has been examined to serve as deacon. His ordination will be in the immediate future.



Sunday School Attendance Averages February 1991-July 1991

CHURCHES	FEB	MAR	APR	MAY	JUN	JUL
Belton	73	88	67			59
Bethel, El Dorado	58	62	65	59	67	
Buffalo, First	37					
Calvary Fellowship	273	207	198	192		
Cape Girardeau	98	102	75	67	56	68
Central	98	109	95	91	99	
Copper Mines	70	68	55	60	63	
Cuba	83	82				
DeSoto	201	212		206	203	184
Farmington	393	438	315	346	369	352
Flat River, First	127	129	112	111	111	108
Hannon	88	117	102	98	90	101
Harmony	77	88	72	66	69	64
Hartville	95	103	107	101	96	93
Hopewell	33		39	37	33	47
Houston	80	103	98	82	87	84
Lebanon, First	88	114	92	87	86	91
Myrtle	36	35	33	31	33	30
Overland	40	46	40	37	32	
Parkview	60	72	66	52	57	54
Richwoods	31	34	35	51	32	
Rock Chapel	75	70	69	73		62
Springfield, First	119	124	115		122	120
Thayer		139	128	130		119
United, West Plains	183	196	180	181	183	175
Willow Springs	66		61	64	59	62
Verdella		65	67	61	72	70

The above is only a partial listing — there are 177 Free Will Baptist churches in Missouri. Each church is encouraged to send in the Sunday School averages each month.

Minute Meditation

by Gary Fry



"Blessed is that man who maketh the Lord his trust"

— Psalm 40:4

Many years ago a military officer and his wife were on board a ship that was caught in a fierce ocean storm. The man had tried to calm his wife, but she remained distraught at the prospect of perishing in the dark waters. She finally grabbed his sleeve and cried, "How can you remain calm when we are in such imminent danger!" The officer removed his service revolver and pointed it at his wife's heart and asked, "Are you afraid of this gun?" Without any hesitation, she replied, "But of course not." "Why not?" he asked. "Because it is in your hand and I know that you love me too much to hurt me with it." To this her husband answered, "I, too, know who holds the wind and waters of this storm in his hand. He loves us so much that he will surely care for us."

While this is a good illustration, we can certainly think of many people who loved God and the Lord loved them

that have suffered great harm in the storms of life that we all face. We would be fooling ourselves to think that God will always keep us from all bad situations.

The Psalmist David certainly did not have trust in a God he expected to shield him from all bad things in life. If he did, he was sadly disappointed! In fact, David writes to us of all the distress he suffered in such strong terms that sometimes we feel the very despair in his soul. Yet he also is the man who writes, "Blessed is that man who maketh the Lord his trust."

David had discovered that God did not promise to take all his troubles away. He found rather that God had promised that whatever he called upon him to bear, he would see him through. We must discover the same truth.

We live in a world fraught with trouble and Christians are not immune to the bad things that happen. The difference in us and the world is that while God doesn't shield us from all problems, we have help bearing those that come our way and can say with the Psalmist, "Blessed is that man that maketh the Lord his trust." Paul Van Gorder says, "No trouble can come so near that God is not nearer."

Beauty of Biology

by Pam Hudson

THE GAP THEORY

Conservative Christians have long debated the more liberal Christians on the actual "original" creation of the heavens and the earth. Did the creation occur within the first day of creations or had a vast time period elapsed? Some proponents of the gap theory suggest that there was a great deal of time between the original creation of Genesis 1:1 and the "without form and void" of Genesis 1:2. The Christians that buy into this theory believe that the earth was filled with all manner of plants and animals (and perhaps pre-Adam men), but because of the fall of Satan, the earth was destroyed by God (probably by a global flood), the earth was then cascaded into complete darkness and became "without form and void." The geological time periods are thought to have occurred during this time accounting for the fossilized plants and animals (and yes, dinosaurs too!) which are found today. These then, are remnants of the "perfect" earth which was destroyed before the six literal days of creation (or should we say "recreation") as transcribed in Genesis 1:3-31.

This theory first became popular in the early 1800s, probably to "support" the relatively new geological "findings." Again, as with so many "theories" that deviate from a literal interpretation of the Bible, we find man trying to make the Scripture "fit" with his own limited knowledge base. When we realize that if we accept the Bible as the source of all truth, it becomes much easier to understand and make sense of the world around us.

The differences between a literal interpretation and the Gap Theory are really quite severe. The Gap Theory must re-interpret other verses in Genesis. *And God saw all that He had made...and it was very good.* At this point the world would already be very old, having already undergone total destruction. Adam would be literally walking not on a clean, perfect earth, but quite literally, the graveyard of all life that had previously existed of which he would

never "have dominion." Also, assuming that plants and animals were living and dying before Adam's sin. Could death exist in a sinless world? Nature was not created to be the ruler of the earth, but man, and not until man first reflected the will of God was death known. According to Romans 12:5, *Wherefore, as by one man sin entered into the world, and death by sin; and so death passed upon all men, for that all have sinned, death is a direct result of sin, not of nature.*

Looking at the Gap Theory from a completely biological view, it is unfounded. If total annihilation occurred before the earth was "recreated" and that fossils we find now are those first living creatures, then there would be no genetic link between the populations. The very nearly identical forms that we discover could in no way be related to the present day life. Likewise, these pre-Adam men of which we find fossils, must have been created without a soul since they obviously died before sin entered the world.

The Gap Theory also discounts the flood of Noah as being relatively insignificant in the geological history of the world. But most of all, the Gap Theory leaves us with no clear word for God about this first perfect world. According to most advocates, the first world would have existed for millions of years. This time period would account for more than 99% of the earth's age to date. Therefore, we are told nothing about the order of the events that shaped this earth. And, how does this affect other passages in the Bible like Exodus 20:11 which states: *For in six days the Lord made heaven and earth, these and all that in them is...* Notice the words "in six days" are not "before six days."

I personally do not subscribe to the idea that the Gap Theory is a minor difference of opinion among theologians. I believe that the most sensible way to approach the idea of creationism is to take God at His word. Time after time, man's ideas fall by the way, but God's Word remains infallible.



Former Missouri Pastor Honored For 50 Years In The Ministry

Rev. and Mrs. Woodrow Matthews were recently honored by the Barnsville Free Will Baptist Church of Hamilton, Alabama, for 50 years in the ministry. "Brother Matthews," as he was affectionately called by those he pastored, was ordained on May 1, 1941. Since that day he has been actively ministering and pastoring in Missouri, Oklahoma, and Alabama. He was presented with a plaque that was inscribed - "Well Done, Thou Good and Faithful Servant." The presentation was followed by a surprise dinner in the Fellowship Hall. Mrs. Matthews also was honored for her 50 years of service as a pastor's wife.

Brother Matthews pastored in Missouri at Old Bethel, Twin Oaks, Mine La Motte, Copper Mines, and churches in and around Fredericktown, from 1941 to 1954. He moved to Cushing, Oklahoma, in 1954. In 1956 he returned to Missouri where he pastored the First Church of Kirksville, and from 1960 to 1973, the Beacon Free Will Baptist Church in Raytown.

Brother Matthews was active in the State Youth Camp, General Board, and served as Moderator of the Missouri State Association before moving to the state of Alabama in 1973. There he pastored the Mt. Olive Free Will Baptist Church of Guin until 1985. Since that time he has pastored the Barnsville Free Will Baptist Church.

When asked by his son what he would like to say to young pastors today, without a moments hesitation he said, "Just love your people, and your people will love their pastor."

"Well Done! Thou Good and Faithful Servant."

EDITOR'S NOTE: Congratulations to a faithful and loving couple, who have served the Lord as Faithful Servants.

Youth Camp Board

Report On Youth Camp Sessions

The 1991 Camp Sessions for our Missouri State Youth Camp are over, and the Lord has blessed with another good year, writes Gene Howell, secretary for the Youth Camp Board. The registration for the Teens Sessions was 476 and 683 for the Pre-Teen Sessions. This made a total of 1,161 registered.

The decisions made were 78 for salvation, 111 for rededication, 5 for a special call, 1 to Christian Service, and 84 that came forward for various needs.

The Youth Camp Board would like to thank all of the campers, sponsors, and workers who made the 1991 Camp Sessions possible. A special thanks go out to the Teen Workers who worked during the Pre-Teen Sessions. They worked very hard and were a blessing to everyone.

Due to the unexpected expense of the "new water system," the Youth Camp has had to borrow \$15,000 to pay for the labor and material used in installing the system. The Youth Camp Board would like to pay this loan back as quickly as possible, in order that the regular giving for Youth Camp

could be used for other needs. If a church, or an organization within the church, could make a special contribution for this loan, it would be greatly appreciated. Contributions may be mailed to the Missouri State Youth Camp, HCR 83, Box 22, Niangua, Mo. 65713 or it may be sent to the State Office, P.O. Box 991, Lebanon, Mo. 65536. Please earmark the check for "Loan for Water System."

A "Wish List" has been started for Youth Camp. The list is: portable ping pong tables, ping pong paddles and balls, personal computer system, and sports equipment (softballs, bats, volleyballs, basketballs, etc.).

If there is someone who would be interested in writing a Bible based curriculum to be used in future Camp Sessions, the Camp Board is interested in talking with that one or ones. This material would be used for the daily teaching sessions. The Pre-Teen is for ages 7-12 and the Teens is for ages 13 and up.

Please contact one of the Youth Camp Board members if you are interested in doing this.

News Release

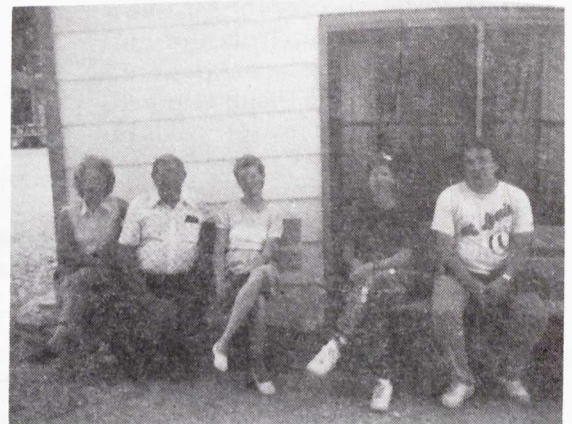
This summer at the National Association of Free Will Baptists in Charlestown, W. Va., the NYC office of Randall House Publications unveiled three new products.

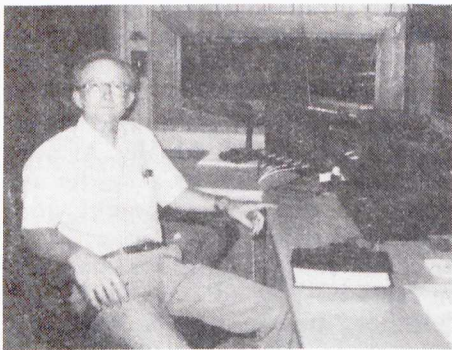
The first product was the **NEW NYC GUIDELINES**. There have been several changes in the guidelines. Your competitors at the 1992 NYC convention in Indianapolis, Ind., could be at a great disadvantage or even disqualified if they are not competing according to the **NEW NYC GUIDELINES**. Every church needs to make sure they have several copies available for their competition leaders. You can order your copy today for only \$5.95.

The next two products you need to be aware of concern the **NEW NYC**

INDIVIDUAL COMPETITION for teens. Your teens will learn more about the Bible, Christian living, missions, relevant topics for today, and more. The junior high teens will have the opportunity to compete in the Turning Point division. The senior high teens will compete in the Horizon division. Be sure to order the appropriate packet for your teens age division. These packets are available only through Randall House Publications. You get so much for such a small investment, \$5.00. Don't wait and put your teens at a disadvantage. Order yours today from Randall House Publications, P.O. Box 17306, Nashville, Tenn. 37217, or call us toll free at 1-800-877-7030.

Youth Camp Memories





Report on National Convention, WNAC, NYC

A spirit of revival swept through more than six thousand delegates and visitors at the National Convention in Charleston, West Virginia. An hour long Wednesday evening altar service resulted in 10 calls to the mission field, 2 calls to preach, 3 conversions, and 23 rededications.

At the three concurrent conventions, registration showed 896 ministers, 195 deacons, 102 local church delegates, 87 state delegates, 56 home missionaries, 25 foreign missionaries, 2,779 non-delegates; 1,412 for the National Youth Conference and 1,016 for the Woman's National Auxiliary Convention.

Rev. Will Harmon, pastor from Pine Bluff, Ark., delivered the keynote message for the emphasis on Sunday evening. His minister of youth and music, Mark Brawley, presented a song that he had written for the service.

Competition began early Monday and continued through Wednesday morning. There were 812 entires in the Bible Competition and the Music and Arts Festival. Rooms overflowed as competition was conducted in seven simultaneous sessions.

Delegates recommitted the convention in its opposition to abortion and encouraged members to write elected officials informing them of that opposition...Gave a record offering at the Wednesday evening Missionary Service of \$34,040.00...Honored Dr. & Mrs. Thigpen for 39 years of service to Free Will Baptist Bible College. Alumni president Fred Hall presented the Thigpens a \$5,000 check and a Book of Remembrance...Struggled through a 14 page financial report on the new National Office Building. The building will cost 1.4 million dollars to build out, some \$75,000 more than authorized...Celebrated 50 years of history with Free Will Baptist Bible College Tuesday evening with a unique program of drama, music, and the spoken word of Academic Dean Robert Picirilli...Commended Free Will Baptist men and women who served in the U.S. Military Operation during Desert Storm...Cheered what was perhaps the finest music program ever presented at a National Convention. Music

coordinator Blaine Hughes blended choirs, quartets, solos, ensembles, instrumentals, and congregational singing to produce the unforgettable music...Praised the preaching by six ministers who delivered the major messages.

EDITOR'S NOTE: This information was taken from the National Offices report.



Points for Pastors

by James McAllister

Have you ever heard of the cycle of growth? Maybe not. But, you have heard of the cycle of seasons - winter, spring, summer, and fall. That's the cycle of the church. There is a grief cycle that everyone must go through when they have lost a loved one. If the bereaved gets hung up in one of the sections of the cycle, they will suffer undue hardship. The same rule applies to the cycle of growth for the church.

First, there is the time for preparing the soil. Breaking up the fallow ground is a Biblical admonishment. Here one must handle doctrinal and conviction questions, and prepare the people in their theology, as well as in their convictions. Teach organization and methods. Teach and preach the great commission. Prepare the hearts of the people.

Second, plant the seed. Be confident of the power of Biblical preaching. Plant evangelistic seed. Plant doctrinal seed. Plant with the expectation of reaping a harvest.

Third, the waiting time. This is the time when the ground has been broken up, the seed has been planted, and now the church prays, trusts, and waits on the Lord.

Last, is the harvest time. Here is where we all enjoy being. We love to harvest. One can see the evidence of revival time and keep it up for some time.

Then the cycle starts again. In fact, it can be like a revolving door. Try it - you may be surprised.

“I must say that your sign has evoked more comment and interest in our church than anything we have ever done.”

Clay, New York



Randall House

Sign Service

Quality Church signage
by the JM Stewart Corporation

Call Toll Free

1-800-443-8032

1-800-443-3065

(In Tennessee)



Looking Out My Parsonage Window

by Ve Ann Tilson

Now, as Paul Harvey would say, "the rest of the story." The questionnaire results and comments from FWB women proved to be most insightful and interesting.

The participants were equally divided into three age groups (18-35), (36-50), and (over 50) years of age, with 70% working outside the home. It was interesting to note that of the 13 ladies not holding an outside job, seven of those were over 50. This seems to indicate the largest number of working age families must deal with a working wife/mother.

Another point noted was in church participation. There was no noticeable difference in church attendance between the two groups, but the "workers" really outnumbered the "homers" when it came to involvement in the various other church ministries, i.e., Sunday School, hospital, nursing home, etc. One lady commented: "I spent more time working in the church while working outside the home than I do now."

But...how do these ladies feel about the added responsibilities of home and job? Some indicated a heavy burden. "Whenever I do work, I'm constantly feeling guilty for not being there for my children...for always being in a rush. I'm not nearly as involved with my church as I would like to be." Over 60% felt their work schedule interfered with the church involvement, and 66% indicated they felt a considerable drain on their energies. Another 62% indicated they would be more involved if it were not for their outside employment.

As can be seen from this survey, working moms and wives definitely have an impact on church participation. Yet, with the state of our economy, many families are forced into a two-earner situation. Because there appears to be a need, we as a church, should try to meet this need in the best manner possible. How can this be accomplished? First, we must pray,

not only for our mothers, but for our family units. As one mother said, "we need to ask the Lord for an insight to this problem..."

The next step must be addressed by each person individually. As one lady put it: "It is just a matter of getting your priorities straight, and God's work should always come first." Another said: "Would rather all mothers be able to stay home and "mother," however, since this is not the case, one must set spiritual priorities, stick to them, and TURN OFF THE TV."

These thoughts seem to follow the same line of thinking as Cheryl Biehl in the book, "I Can't Do Everything." According to Mrs. Biehl, we must: (1) Set priorities, be able to say **yes** to the best plan and **no** to other good things. There are lots of good causes, but don't overextend yourself to the point of not doing a good job of any; (2) Focus your life, make sure you've included time for prayer, Bible study, etc. Is your focus on yourself or upon God?

God has established some absolutes that He commands us to obey. "Go before God to decide what to do with your life that will please Him; then break your goals down into manageable units and carry them out...one step at a time" (p. 16).

How you cope with all that life demands of you as a Christian woman depends largely upon "you." But...as one pastor commented, "At the end of my life, I don't want to look back and wonder what life would have been like if I had done it God's way." Our focus should not be "our" way, but God's way.

Answers to last month's Puzzle 6

E	N	O	C	H		O	A	K	
M	A	A	I		H	A	N	N	A
M	A	R	T	H	A		E		L
A	M		I	I	M		S	O	L
N		B	E	L			I	R	A
U		E	S	L	I		M		I
E	W	E		S	T	O	U	T	
L	O	R	D		A	L	S	O	H
	R			O	L	D		P	A
G	L	A	D		Y			A	M
D		O	F		U	Z	Z	I	

Financial Information

JULY 1991

COOPERATIVE DISBURSEMENTS

18.50% Mo. State Home Missions Board	\$ 6,220.53
17.50% Exec. Off. & Gem	5,884.29
3.50% General Fund	1,176.86
8.50% Youth Camp Bd.	2,858.08
2.50% Youth Ministries Bd.	840.61
2.50% C.E. Board	840.61
2.50% Sr. Adult Ministries Board	840.61
5.00% Mo. State Retirement Program	1,681.23
30.50% Nat'l. Ministries, Hillsdale & Calif. Christian College	10,255.47
Foreign Missions Board	
National Home Missions Board	
Same Allocation:	
Free Will Baptist Bible College	
Hillsdale Free Will Baptist College	
Executive Department	
Layman's Board	
Radio & TV Commission	
Theological Commission	
Historical Commission	
Board of Retirement & Insurance	
1% Calif. Christian College	
(\$102.55 included in \$10,255.47)	
9.00% State Office & Bookstore Bldg.	3,026.21
Total	\$33,624.50

This month ended on Wednesday, and the increase in receipts indicate that. That enabled the receipts for July to show the full month. The remarks made last month anticipated this. We are so grateful to our Lord for His blessings on this Biblical plan that supports His work. May He continue to bless every faithful pastor, church, and layperson as they continue to support the cause of Christ through cooperative giving.

The allocation for National Ministries goes undesignated for this year with FWBBC & Hillsdale receiving an equal amount. California Christian College will continue to receive the 1%.

JULY 1991 RECEIPTS

COOPERATIVE

Mt. Zion, Gower	\$ 51.70
Friendship	431.68
Belton	327.12
Twin Oak	981.44
Verdella	225.81
Liberty	331.17
Oak Hill, Union	540.50
Tyrone	132.00
Thayer	632.00
Pleasant Ridge	120.00
Myrtle	206.93
Overland	212.90
Chapel of the Ozarks	533.22
Faith & Hope	77.80
Number One	47.38
Royal Oak	120.00
Merl's Chapel	169.00
Alton	225.00
Fourth	200.00
Seymour	121.00
New Hope, Fredericktown	10.96
Victory Hill	86.44
Victory, Alton	189.00
Rock Chapel	371.96
Rolla	89.23
Heritage	105.00
Beacon	750.00
Calvary, Conway	178.71
Oak Hill, Fredericktown	122.93
Lone Star	35.43
DeSoto	1,071.00
Mt. Pisgah	236.00
Unity	221.90
Lebanon, First	532.55

Grant Avenue	784.24
Clifton	38.94
Calvary Chapel	168.78
Lingo	49.93
Cope	48.00
Union Grove	160.00
Union Light	307.00
Columbia	75.00
Houston	341.57
Joplin	332.27
Joplin	441.75
Cape Girardeau	606.39
Flat River, First	577.26
Black Oak	235.43
Kingsway	304.24
Cabool	333.94
West Plains, First	534.73
Smyrna	304.00
Mine La Motte	37.09
Springfield, First	860.70
Freeman Chapel	229.30
Hartville	399.15
Mill Creek	208.18
United, W.P.	825.03
Bailey Chapel	65.00
Kirkville	106.57
Hurryville	317.28
Hannon	428.11
Hopewell	179.00
Farmington	2,152.20
Scott City	605.00
Trinity	1,205.98
Stockton	126.60
Potosi	156.60
Bethel, El Dorado	83.24
Richwoods	480.00
Faith, Lemay	25.00
Riverview, IA	698.80
Wilderness	423.00
Oak Grove, Norwood	120.48
New Life, Licking	317.70
Willow Springs	179.63
Copper Mines	239.82
Leadington	360.14
Pleasant Hill	59.72
Macedonia	51.50
Marshfield	259.15
Black Oak	22.19
Monett	676.11
Wolf Creek	306.25
South Fremont	545.00
Eastern Gate	380.49
Terrill Road	127.00
Parkview	388.92
Grace	1,375.00
Central	893.35
Berean	22.28
Hickory Grove	78.77
Koshkonong	67.18
Clifton	37.74
Victory Hill	66.27
Myrtle	223.71
Calvary, Conway	190.50
Thayer	505.00
Fourth	130.00
Pleasant Home	148.48
Cope	39.00
Tyrone	43.40
Central	706.66
Total	\$33,624.50

FWBBC

Thayer	\$ 60.00
Beacon	75.00
DeSoto	35.00
Grant Avenue	110.00
Parkview	10.00
Farmington	126.00
Calvary Fellowship	35.75
Total	\$451.75

HILLSDALE COLLEGE

Oak Hill	\$ 18.00
Thayer	70.00
Beacon	100.00
Grant Avenue	10.00
Hannon	50.00
Farmington	133.00
Calvary Fellowship	35.75
Central	54.00
Total	\$470.75

CALIFORNIA CHRISTIAN COLLEGE

Farmington	\$35.00
------------	---------

JOHN McCURE ACCOUNT

Thayer	\$19.00
Verdella	10.00
Farmington	10.00
Monett	25.00
Grace	27.50
Total	\$91.50

YOUTH CAMP

Thayer	\$ 60.00
Myrtle	90.50
Indian Creek Association	200.00
Mountain Grove	20.00
DeSoto	50.00
Mt. Pisgah	10.00
Hartville	10.00
Hannon	15.00
Fordland	20.00
Trinity	14.00
Parkview	10.00
El Dorado Springs	15.00
Willow Springs	10.00
Calvary Fellowship	39.00
Macedonia	10.00
Buffalo, First	50.00
New Rock Springs	10.00
Berean	10.00
Total	\$643.50

FOREIGN MISSIONS

Belton	\$ 50.00
Verdella	465.54
Niangua	58.00
O'Fallon	35.00
Richwoods	67.00
Oak Hill, Union	36.00
Thayer	45.00
Pleasant Ridge	45.00
Southside	170.00
Myrtle	160.00
Faith & Hope	82.00
Mountain Grove	190.00
Merl's Chapel	200.00
Fourth	127.41
Rock Chapel	144.00
Beacon	1,077.00
DeSoto	351.50
Mt. Pisgah	150.00
Lebanon	65.00
Grant Avenue	427.92
Calvary Chapel	20.00
Columbia	23.88
Joplin	50.00
Flat River First	115.46
C. Layman	10.00
A. Akeman	10.00
West Plains First	326.53
Freeman Chapel	382.50
Hartville	79.83
United, W.P.	9.64
Kirkville	35.00
B. Thompson	50.00
Hannon	533.11
Fordland	266.73
Parkview Mission Group	60.00
Farmington	6,408.01
Trinity	441.20
St. Francois Association	2,080.75
Faith, Lemay	40.00
Cuba	67.59
Oak Grove, Norwood	80.32
Greenfield	60.00
S. Hart	20.00
Calvary Fellowship	1,486.99
Leadington	35.00
Macedonia	10.00
Marshfield	10.00
Martinstown	100.00
Monett	1,123.13
Calvary Chapel	26.00
Oak Grove, Cabool	65.00
S. Fremont	105.00
Eastern Gate	68.05
Parkview	336.00
Grace	114.50
Central	426.76
Hickory Grove	52.25
Freeman VBS	141.85
Myrtle	100.00
Thayer	161.50
Fourth	50.00
Pleasant Home	54.38
Richwoods	62.00
Mountain Grove	184.26
Total	\$19,829.59

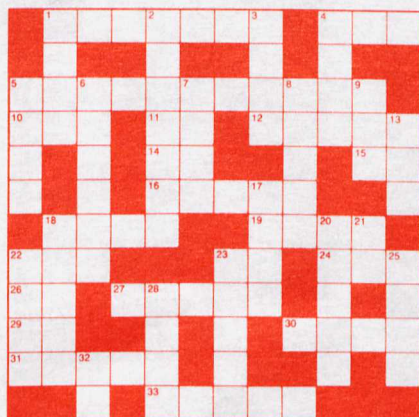
NATIONAL HOME MISSIONS

Verdella	\$ 15.00
Richwoods	27.00
Oak Hill, Union	30.00
Thayer	140.00
Myrtle	144.00
Mountain Grove	145.00
Rock Chapel	247.93
Beacon	290.00
DeSoto	200.00
Mt. Pisgah	75.00
Lebanon	5.00
Grant Avenue	21.00
Columbia	23.88
Joplin	80.00
Flat River First	77.73
United, W.P.	20.00
Kirkville	5.00
Hannon	10.00
Fordland	10.00
Parkview Mission Group	10.00
Farmington	12.38
Trinity	20.00
Oak Grove, Norwood	40.16
Leadington	20.00
Buffalo First	100.00
Monett	10.00
Wolf Creek	55.49
S. Fremont	12.00
Eastern Gate	10.00
Parkview	28.00
Grace	115.00
Central	275.00
Myrtle	114.00
Thayer	100.10
Pleasant Home	10.00
Richwoods	27.00
Mountain Grove	35.00
Total	\$2,560.67

STATE HOME MISSIONS

O'Fallon	\$ 30.00
Richwoods	15.00
Oak Hill, Union	43.00
Thayer	35.00
Pleasant Ridge	25.00
Southside	20.00
Myrtle	69.50
Faith & Hope	82.00
Mountain Grove	47.00
Fourth	20.00
Rock Chapel	91.35
DeSoto	50.00
Lebanon	65.00
Grant Avenue	156.65
Grant Avenue VBS	64.58
S.E. District Association	25.00
Columbia	35.00
Joplin	5.00
Flat River First	57.73
J.W. Rader	25.00
West Plains First	110.74
United, W.P.	9.64
Hannon	214.05
Fordland	18.00
Farmington	120.00
Trinity	70.00
Cuba	135.16
Calvary Fellowship	30.00
Leadington	5.00
Macedonia	25.00
Marshfield	35.91
Monett	6.00
S. Fremont	60.00
Eastern Gate	20.00
Parkview	33.85
Grace	35.00
Central	47.00
Myrtle	63.00
Thayer	35.00
Richwoods	15.00
Mountain Grove	47.00
Total	\$2,097.16

Puzzle 7



ACROSS

1. Founder of the Hebrew nation (Gen. 22)
4. Pious, wealthy man of Uz, whose writings are the 18th book of the Old Testament
5. The resting place of the ark after the great flood (Gen. 8:4)
10. A poisonous snake (Job 20:16)
11. "_____ the beginning God created the heaven and the earth." (Gen. 1:1)
12. A tower built by the people of Shinar to "reach unto heaven" (Gen. 11:4-9)
14. "_____ and no man shall set _____ thee to hurt thee" (Acts 18:10)

DOWN

1. 30th book of the Old Testament
2. Here the disciples of Jesus were first called Christians. (Acts 11:26)

15. "_____ man taketh it from me, but I lay it down of myself" (John 10:18)
16. The son of Jephunneh the Kenezite (Num. 32:12)
18. The son and successor of Baasha, King of Israel (I Kings 16:8-10)
19. The great river of Egypt
22. "I am Alpha and Omega, the beginning and the _____." (Rev. 22:13)
23. "_____ I _____ unto my Father." (John 14:12)
24. A box made of a shittim wood and covered with gold (Ex. 25:10-16)
26. "_____ patient therefore, brethren, unto the coming of the Lord" (James 5:7)
27. A plant the Israelites in the wilderness regretted losing (Num. 11:5)
29. "_____ I _____ the way, the truth, and the life" (John 14:6)
30. "_____ and I was delivered out of the mouth of the _____." (II Tim. 4:17)
31. Paul's hostess during his first stay at Philippi (Acts 16:14, 15)
33. He with the people of Zanoah repaired the valley-gate in the wall of Jerusalem. (Neh. 3:13)

3. "But I will send a fire upon _____." (Amos 2:2)
4. A captain in David's army (II Sam. 11:17)
5. The mother of Jesus (Luke 1:27-31)
6. "_____ me with thy free spirit." (Ps. 51:12)
7. A prophetess in Jerusalem (Luke 2:36)
8. A Jewish teacher (John 3:2)
9. Number of Commandments God gave Moses (Deut. 4:13)
13. His wife was turned to a pillar of salt. (Gen. 19:23-26)
17. Place where John was baptized: A _____ (John 3:23)
18. "_____ I will be an _____ unto thine enemies" (Ex. 23:22)
20. Language of the Romans (John 19:20)
21. Firstborn of Judah (Gen. 38:3-7)
22. Cursed mountain in the promised land (Deut. 11:26-29)
23. A city of Bashan (Deut. 4:43)
25. _____ of Kings and Lord of Lords (Rev. 19:16)
28. Builder of the ark (Gen. 6:13-22)
32. "_____ I can _____ all things through Christ" (Phil. 4:13)

(Answers in next month's GEM)

Puzzle 7 — Used by permission of
Shining Star Publications,
Copyright © 1986,
A Division of Good Apple, Inc.

MO. STATE ASSOC. OF
FREE WILL BAPTISTS
202 West Commercial
Lebanon, Missouri 65536

NON-PROFIT
BULK RATE
U.S. POSTAGE
PAID
INDEP., MO. 64050
PERMIT NO. 331

FWB BIBLE COLLEGE
LIBRARY & FACULTY
3606 WEST END AVE.
NASHVILLE TN 37205

TO INSURE UNINTERRUPTED DELIVERY OF YOUR GEM
PLEASE INFORM US IMMEDIATELY OF YOUR NEW ADDRESS