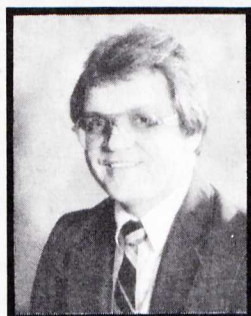


# **THE FREE WILL BAPTIST GEM**

**Volume 65, No. 5, May 1995**

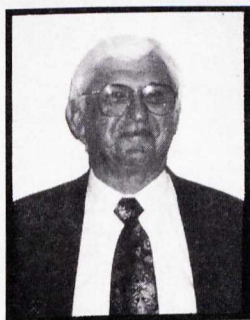
FWBBC  
LIBRARY



Rev. Rick Dablemont



Dr. Elmer Towns

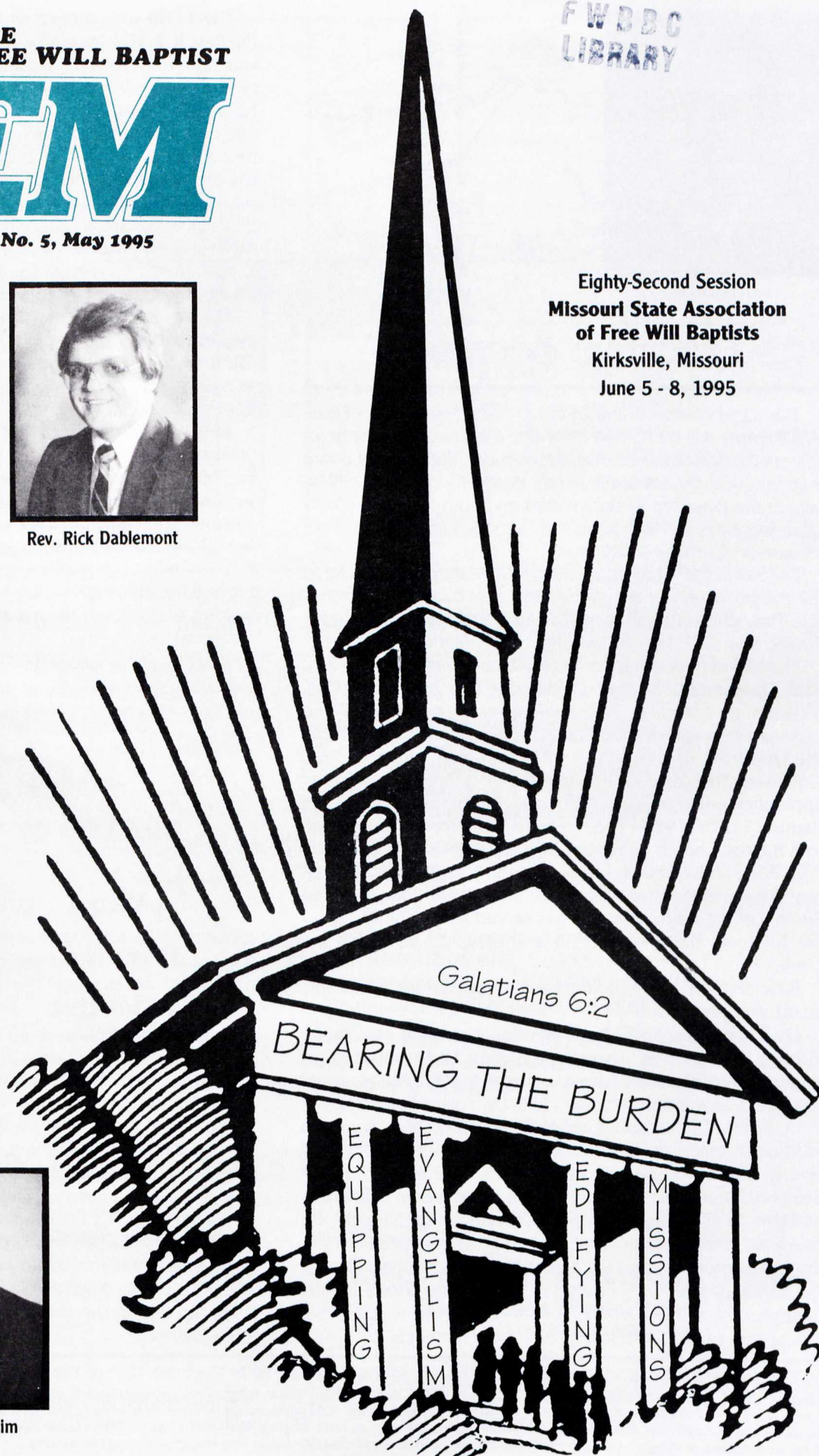


Rev. R. E. Helsley



Rev. Jerry Pilgrim

Eighty-Second Session  
Missouri State Association  
of Free Will Baptists  
Kirksville, Missouri  
June 5 - 8, 1995







Nathan Ruble



## From The Desk of The

## Executive Secretary

The 82nd session of the Missouri State Association of Free Will Baptists will be held in Kirksville, Missouri. The Northeast District Association is hosting this session. The General Board meeting Monday and the Pastor's Workshop Tuesday will be held at the Days Inn Motel located on South Highway 63. All other meetings will be held at the Kirksville Junior High School located on Cottage Grove Ave.

The Executive Committee selected "Bearing the Burden" as the theme for this year's convention. It is based on Galatians 6:5. They chose as speakers Rev. Rick Dablemont, Dr. Elmer Towns, Rev. R. E. Helsley, and Rev. Jerry Pilgrim.

**The Monday evening message will be delivered by the Rev. Rick Dablemont.** Brother Dablemont was born at Licking, Missouri, on March 2, 1952. He was converted in 1977 and ordained to preach in 1983. Rick received a B.A. degree from the University of Missouri in 1973 and a M.A. degree from Covenant Theological Seminary in 1991. He served as an apprentice under Rev. Max Courtney at the Licking Free Will Baptist Church (1981 - 1983). He pastored the Big Creek Free Will Baptist Church in Yukon, Missouri (1983) and the Cuba Free Will Baptist Church (1984 - present). Brother Dablemont has served as Assistant Clerk, Clerk, and Moderator of the South Central Association. He has served as Assistant Clerk of the Missouri State Association and presently serves as the Clerk.

Rick and his wife, Judith, have three children: Roderic, Jacob, and Jonathan.

**Dr. Elmer Towns will be presenting a seminar on Church Growth at 2:00 p.m. Tuesday afternoon and preaching on Tuesday evening.** Elmer Towns was born in 1932, in Savannah, Georgia, and was converted in 1950. Dr. Towns holds degrees from Fuller, Dallas and Garrett Seminaries, plus Southern Methodist. He is the author of 50 books, vice president of Liberty University, and dean of the B. R. Lakin School of Religion. He and his wife, Ruth, have three grown children. In addition to his academic duties in Lynchburg, Virginia, he conducts Sunday School and Church growth seminars, workshops and modular courses across the United States. One of the founders, with Jerry Falwell, of the original Liberty Baptist College, now the University, Towns also served as executive vice president of the Baptist University of America.

**The 11:00 a.m. service on Wednesday, June 7, will have the Rev. R. E. Helsley delivering the message.** Brother Helsley was born in Mansfield, Missouri, in 1932. He was converted in 1949 and ordained to preach in 1962. R. E. has pastored the New Home Free Will Baptist Church, Hartville, MO (1962 - 1963), the Union Grove Free Will Baptist Church, Norwood, MO (1962 - 1968), and the Wolf Creek Free Will Baptist Church, Mansfield, MO. (1968 - present). Brother Helsley has served on the Missouri State Youth Camp Board, the General Board, the Executive Committee, and presently serves on the Missouri Senior Adult Ministries Board.

R. E. and his wife, Rose, have two children, Mrs. Roger (Kathy) Garrison and Mark Helsley.

**The Rev. Jerry Pilgrim will be preaching in the Wednesday evening service.** Brother Pilgrim was born in Oklahoma City, Oklahoma, in 1955. He was converted in 1973 and ordained to preach in 1976. He received a B.A. from Hillsdale Free Will Baptist College in 1973.

Jerry has pastored churches in Oklahoma and Missouri. He was serving as pastor of the St. Peters Free Will Baptist Church, St. Peters, Missouri, when God called him into full time evangelism. He has held a number of district and state offices in Missouri and Oklahoma. He served as Assistant Moderator of the Oklahoma State Association and on the Oklahoma Executive Committee. Jerry also sings with the Master Peace quartet. He and his wife, Marion, are excellent musicians.

Jerry and Marion have three children: Jerrod, Emily, and Rebecca.

Make plans to attend the 1995 Missouri State Convention and enjoy the hospitality of the Northeast Association. There will be great singing, great preaching, and great fellowship.

## A Word from the Moderator



Gary Fry

In a few days, Free Will Baptists from all over the state of Missouri will head to Kirksville for our annual State Meeting. It is always a time of great fellowship and encouragement. This year should be no different.

As we gather for the evening services in the Kirksville Junior High School Auditorium, our hearts will be blessed by our preachers as they minister the Word to us. We will feature Elmer Towns in a special seminar Tuesday afternoon at the Days Inn and in the evening service that night at the Junior High School.

All items for publication must be in the hands of the editor *no later than the 10th of the month* preceding the issue month.

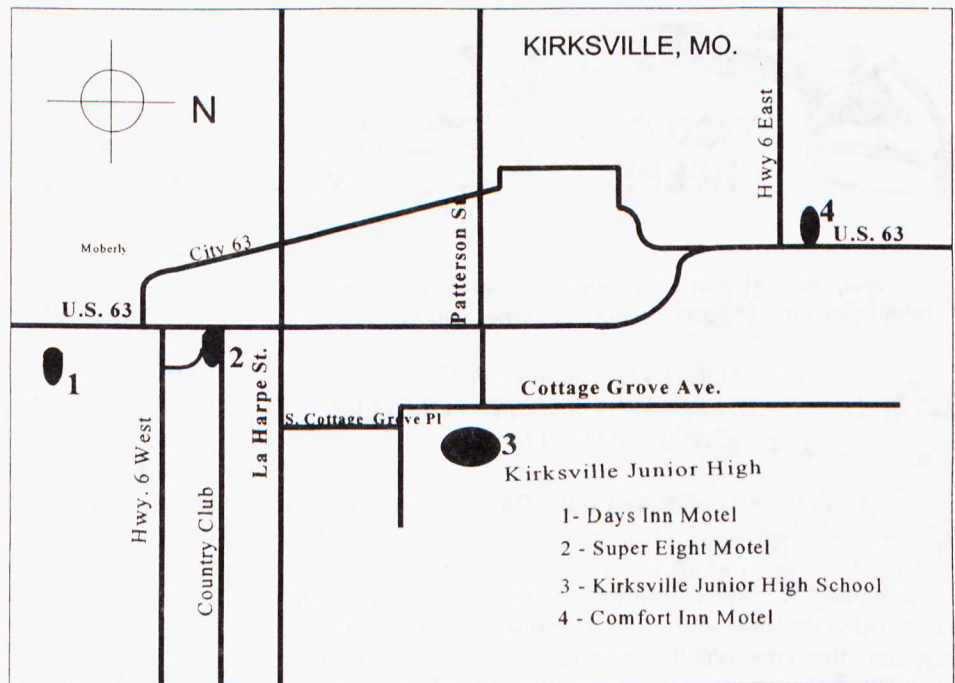
Business Office: 202 West Commercial, Lebanon, Missouri 65536. Nathan Ruble, Editor. Address all correspondence relating to the GEM, including subscription and mailing information, to the above address. The sermons and articles published in the GEM represent the personal views of the authors and not necessarily the views and policies of the Missouri State Association of Free Will Baptists or of the editor. Subscription rates: Single subscription, \$4.50 per year, cash in advance. Church Plan, \$4.00 per year, consisting of five subscriptions or more. The Church Plan will continue until it is canceled by the church. This magazine is published monthly.



The Auxiliary will also meet Tuesday. It is always great to see our ladies together, rejoicing over the success of their work for the Lord and planning what greater things they will do next year!

The folks of the Northeast Association, led by their Moderator, Bro. Lynn Beck, are hard at work along with Bro. Nathan Ruble to insure that this year's meeting is one of the best yet. Be praying for all who are working to make the meeting a success. Those people include all the men who will be preaching, those who will meet in boards and make decisions about our work for the Lord in the state, those who will moderate the meetings, and those who will sing and play for our worship of the Lord.

We want you to be a part of the excitement and joy we will share, so make your plans now to attend the 1995 Missouri State Association, June 5 - 8 in Kirksville, Mo.



## Motel Information For Missouri State Convention, June 5 - 8

You will need to make your reservations as early as possible for the state convention.



### America's Waking Up To Us

Hwy. 63 South \* P.O. Box M  
Kirksville, Missouri 63501

816-665-8244

1 - 4 persons per room — \$45.00 + tax

Complimentary Breakfast Buffet served 6:30 - 9:30, Monday - Friday (Scrambled Eggs, Hashbrowns, Biscuits & Gravy, Danish, French Toast or Pancakes, Fresh Fruit, Cereal, Fruit Juice). Gratuity and Coffee not included.

Please mention you are with the Free Will Baptist Convention when you make your reservations. Reservations must be made as early as possible.



### Comfort Inn of Kirksville

2209 N. Baltimore  
Kirksville, MO 63501

(816) 655-2205

One Bed - 1 - 2 people \$35.95 + tax  
Two Beds - 2 people 38.95 + tax  
Triple or Quad - 38.95 + tax  
Complimentary Continental Breakfast

Please mention you are with the Free Will Baptist Convention when you make your reservations. Reservations must be made as early as possible.



### SUPER 8 MOTEL - KIRKSVILLE

1101 Country Club Drive \* Kirksville, MO 63501  
PHONE AND FAX: 816-665-8826

Single - \$33.05 + tax  
Double - 40.70 + tax  
Triple or Quad - 40.70 + tax

Please mention you are with the Free Will Baptist Convention when you make your reservations. Reservations must be made as early as possible.

DRIVE THRU

FULL HOOKUPS

## EAGLE LODGE CAMPGROUND

Bob and Neva Pickens, Owners  
(816) 332-7044

U.S. HIGHWAY 63  
6 MILES S. OF KIRKSVILLE, MO 5 MILES N. OF LA PLATA, MO

\$12.00 per night hookup  
\$65.00 per week





Now, through our agreement with long-distance telephone carrier AmeriVision/LifeLine, you can .....

**HELP FUND THE MINISTRY OF  
MISSOURI STATE FREE WILL BAPTIST YOUTH CAMP  
(CAMP NIANGUA)**

**HOW THE PROGRAM WORKS** – You can have 10% of your long-distance billing given to Missouri State Free Will Baptist Youth Camp (Camp Niangua), and it won't cost you anything! Simply call the toll-free number below and tell them you want LifeLine as your long-distance carrier. Be sure to specify that Free Will Baptist Youth Camp is to receive the tithe (10%) of your monthly long-distance bill.

The change-over is "invisible," and you'll use your phone just like always. You can be billed through your local phone company, as you probably are now, or enjoy even greater savings with direct billing. If your phone company charges a switching fee, send the bill to LifeLine for a prompt refund.

**WHO IS LIFELINE?** LifeLine is a service of AMERIVISION, a private corporation and major long-distance carrier like AT&T and MCI. However, instead of promoting their business with major media advertising, new customers sign up through special programs like this. LifeLine is a Christian company built on biblical values and has taken a stand against abortion, pornography, and the homosexual lifestyle. LifeLine seeks to help organizations, such as the Free Will Baptist Youth Camp, who are involved in building values in our youth and advancing the cause of Jesus Christ. With LifeLine you can call long-distance with a clear connection and a clear conscience.

**LIFELINE PRIORITIES** – The commercial service, called LifeLine Priorities, is competitive and flexible to meet the needs of large or small businesses. Simply send LifeLine a copy of last month's commercial bill, and they will show you how to save while also giving 10% of your bill to Free Will Baptist Youth Camp. LifeLine Priorities provides these valuable services for business customers:

- 1) Detailed managerial reports with each bill;
- 2) One-, two-, or three-digit accounting codes for managing phone usage;
- 3) No installation or monthly fee;
- 4) Six-second billing, instead of full-minute billing, and savings up to 30% under local Bell system charges;
- 5) Optional "800" service;
- 6) Commercial rate of .1390.

**QUALITY & SAVINGS** – LifeLine uses the same crystal clear digital fiber optics network as many other long-distance carriers. You'll receive the same quality service you have now, possibly even better. Long-distance charges with LifeLine are generally 4% to 8% less than standard AT&T rates (based on AT&T standard tariffed rates, depending on distance and time

of call). Plus, you'll get a free, easy-to-use travel card for using LifeLine when you're away from home. Try LifeLine for 90 days. If you're not pleased, you can switch back at no charge. LifeLine will give you 30 free minutes of long-distance calling when you sign up.

**CALL NOW!** Whether you wish to switch your personal phone, your business, or both, simply call the toll-free number. Mention Missouri State Free Will Baptist Youth Camp as the organization to receive the tithe (10%) of your monthly long-distance bill. Even if your long-distance bill is \$5.00 a month or less, try LifeLine today and you will make a tremendous difference in the future quality and financial strength of Free Will Baptist Youth Camp. Remember, stewardship starts with your first call. **Please call this number today and switch to LifeLine: 1-800-493-2002.** Tell them you want to support the Missouri Free Will Baptist Youth Camp.

## Adjusting to the World

A. W. Tozer

I am convinced that many (who call themselves) evangelicals are not truly and soundly converted. Among the evangelicals it is entirely possible to come into membership, to ooze in by osmosis, to leak through the cells of the church and never know what it means to be born of the Spirit and washed in the blood. . . .

What we need is what the old Methodists called a sound conversion. . . . The children of the protesters, children of the Reformation, have been brainwashed and indoctrinated by those who believe that changes have made a difference in God's plan, a difference in Christianity and a difference in Christ. We have been brainwashed to believe that we cannot read the Bible as we used to. We must now read it through glasses colored by change. We have been hypnotized by the serpent, the devil, into believing that we no longer have a trustworthy Bible, so Protestantism is no longer a moral force in the world.

Running our Protestant world are people who talk solemnly about Christ but who do not mean what the Bible means. They talk about revelation and inspiration, but they do not mean what our fathers meant. They accept the belief that there has been change and that Christians must adjust to the change. The word used is *adjustment*. We must get adjusted, forgetting that the world has always been blessed by the people who were not adjusted. . . .

Jesus was among the most maladjusted people in His generation. He never pretended to adjust to the world. He came to die for the world and to call the world to Himself, and the adjustment had to be on the other side.

*EDITOR'S NOTE: This article was reprinted with permission from The Voice In The Wilderness magazine.*



## Ozark Church Dedicates Activities Building



Activities Building

The First Free Baptist Church of Ozark had its beginning not quite two years ago when the Missouri State Home Mission Board commissioned Rev. Gary Mitchener and his family to establish a church there. Since its beginning God has blessed and added to the work. God has brought together a congregation that now averages around 100 people each Sunday. He has provided a beautiful facility at a price far below what it would have cost to build a third of the building that they now have. The building was purchased in two stages. The first to be purchased was the sanctuary and the classrooms. The second acquisition was the activities building. This building is connected to the sanctuary/classrooms building and provides the church with a fine kitchen, more classrooms, and a gymnasium. The activities building was dedicated to the Lord and His service

in the morning worship service on March 26.

Pastor Gary Mitchener enthusiastically welcomed 108 people to the morning worship service. The service was filled with songs of praise as Music Director David Lattimer led in singing praise choruses and congregational hymns. The special music was provided by the adult choir, the teen choir, the children's church members, and Glen Haworth. The great music filled the sanctuary with a sense of God's presence. Rev. Nathan Ruble delivered the morning message. He commended the church on its growth, its vision, and its giving. Following the invitation, the congregation was led to the activities building where Pastor Mitchener led in the act of dedication. The prayer of dedication was prayed by Rev. Ruble. After the closing prayer, the ladies of the church served refreshments which they had prepared for this special occasion.

Please continue to pray and support this mission church until it is fully established.



Rev. & Mrs. Gary Mitchener



The Act of Dedication

## A Personal Plea From the Wentzville Mission

by Pastor Jim Mertz



I am writing to our Missouri Free Will Baptist friends to express our thanks and to plead for your help. First, let me thank you for your love, prayers, sacrifices, and love offerings which you have given to help establish the Crossroads Free Will Baptist Church of Wentzville.

Presently, our church is averaging about 60 in attendance and is paying a \$1,700 a month mortgage. We are paying all other expenses and about a third of Pastoral support. We need to grow in order to handle a full time ministry. This will take time and continued monthly support.

If consistent monthly support does not come, then our account sinks deeper in the red, which basically means we are borrowing money from the National Home Missions General Fund. This money must be paid back. For most of the nine years that we have been serving here, our account has been in the red. I feel only the Lord knows how that has added to our burden.

I answered the call of the Lord and the plea of Free Will Baptists to be your missionary. I have given the Lord and Free Will Baptists nearly 10 prime years of my life, with no regret. There is absolutely nothing I have to gain personally, except the satisfaction that I have done what God called me to do. I am convinced that God is building a beautiful, solid church in Wentzville that is touching the world for Christ. Last year we saw 14 saved and had a high Sunday attendance of 141. Last Sunday a dear lady visited us for the first time, driving 20 miles to our church. She publicly testified that she had been searching for a church like this for two years! I am excited to share with you that our mission has sent workers to Brazil, Panama, and Haiti as summer missionaries. This summer we are sending two of our youth to France and Venezuela. The best news yet is that a family in our church has recently answered God's call to the mission field of Haiti. They are preparing to go as a witness and to give medical assistance.

Last year, we gave over \$6,000 to outside causes! God is doing a good work and establishing a church that is "giving back" to our denomination. I am deeply grateful to those churches which continue to carry a burden for the work in Wentzville. We need your prayers and monthly financial support in order to erase our present deficit so that we might finish the task.

Your offering may be sent to the Missouri State Office or to the State Home Mission Treasurer: Rev. Dale Skiles, 4534 S. McCullough, Springfield, MO 65804-7208.

Thank you for "giving to the Lord" and hearing my plea. (My present deficit is \$13,000.)



## Missouri Student Completes College Basketball Career

Danny Maggart, a Senior at Free Will Baptist Bible College in Nashville, Tennessee, just completed his fourth year playing on the Flames basketball team.

In his four years he accumulated 1,133 points. During his Senior year, he became the fourth player in the history of the Flames basketball program to exceed 1,000 points in a career. Also during his Senior year Danny scored 461 points which included 91 three-point baskets. His 91 three-point shots set a season record for a single player at the college.

Danny averaged 14.9 points per game his Senior year and helped lead the Flames to the Southern Christian Conference Championship and the NCCAA Southeast Regional Championship. From there, they advanced to the National NCCAA Division II tournament in Cincinnati, Ohio, on March 2 - 4, where they finished fourth in the nation.

Congratulations to all the Flames and especially to Danny Maggart for his accomplishments as a member of the Free Will Baptist Bible College Flames.

When asked what he enjoyed most in playing for the Flames, Danny said, "Being able to glorify God by playing a sport He has given me the ability to play."

Danny will graduate next year with a degree in Physical Education. He is the son of Rev. and Mrs. Vernon Maggart of Bolivar, MO.

Under the leadership of Coach Byron Deel, the Flames basketball program continues to create enthusiasm and school spirit on the campus of Free Will Baptist Bible College and among basketball fans across our denomination. GO, FLAMES!

The Flames finished the 1994-95 season with a record of 27 wins and 10 losses.

## Bible College Announces Graduation Speakers

Rev. John Hollis and Rev. John Gibbs will address graduating seniors, family, and friends at Free Will Baptist Bible College's graduation events in May.

Rev. Hollis will bring the Baccalaureate Message on Sunday evening, May 7, at 7:00 p.m. He pastors Crossroads Free Will Baptist Church in Effingham, Illinois. He is a 1973 graduate of Free Will Baptist Bible College and, in addition to his pastorates, has served as Moderator and Assistant Moderator of the Illinois State Association of Free Will Baptists.

Rev. John Gibbs will give the graduation address at Commencement Exercises on Thursday, May 11, at 10:00 a.m. He and his wife, Doris, have a son, Darin, in the graduating class. Rev. Gibbs has pastored for 20 years, served as Promotional Director for Tennessee Free Will Baptists, and was Director of Development for National Free Will Baptist Home Missions. He is currently engaged in a national ministry of conferences, retreats, and revivals. He is a member of FWBBC's Class of 1964.

Both services will be held in the college's Memorial Auditorium and are open to the public.

## Olfords to Speak at Pastors' Conference

Dr. Stephen Olford and his son, Dr. David Olford, will be the speakers at Free Will Baptist Bible College's 1995 PASTORS' CONFERENCE, September 25-27. The conference will focus on the importance of preaching and personal spiritual renewal as essential elements in building strong churches.

Dr. Robert Woodard, Conference Director, says, "We know of no person who has a greater burden for preaching and spiritual renewal than Dr. Olford. He is truly a 'teacher of preachers'. He is, without doubt, one of the most powerful preachers you will ever hear." He adds that Dr. David Olford has also been greatly used in the area of evangelistic preaching.

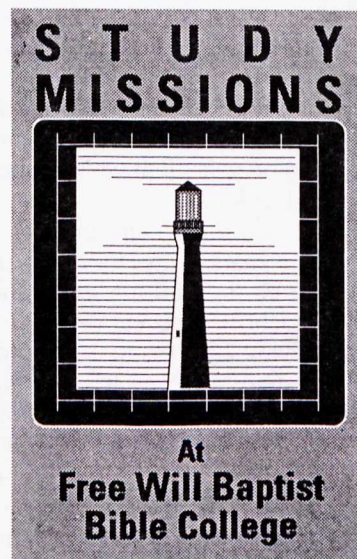
Dr. Stephen Olford is founder and board chairman of Encounter Ministries, based in Memphis, Tennessee. He has pastored in England and New York City. He has written 21 books and seven volumes of resources for expository preaching.

Dr. David Olford is President of Encounter Ministries and Director of Studies at the Stephen Olford Center for Biblical Preaching. He is editor of *The Preacher* and compiled the book, *A Passion for Preaching*. He preaches and teaches regularly at preaching workshops.

The Conference will begin Monday night, September 25, and will run through Wednesday evening, September 27. Rather than taking offerings, the college will charge a Conference fee of \$30 per person (\$20 per person for couples; \$20 per person for four attendees or more from the same church).

Both men will lecture on expository preaching and demonstrate its effectiveness. Dr. Stephen Olford will preach in the evenings on personal commitment to Christ.

All Free Will Baptist preachers are urged to make this Conference part of their fall calendar.



For a free catalog, call:  
**1-800-76-FWBBC**



## GENERAL INFORMATION

THE COST FOR TUITION, FOOD & HOUSING,  
WILL BE AS FOLLOWS:

All Campers .....\$45.00  
Workers & Sponsors .....\$15.00  
Children Under 7 Years.....\$ 3.00 \*  
(Must Be Accompanied By Parent) \*

The Youth Camp Board would like to recommend that each church be responsible for workers and sponsors fee. We regret that we are forced to make a charge for sponsors and workers. The inflated cost of camp operations in general, makes the charge necessary.

### RESPONSIBILITY OF CABIN SPONSORS:

Cabin Sponsors are Responsible, for the conduct in their cabins. You are responsible for the safety and well-being of all those whom you are sponsoring. WHEN A CAMPER / CAMPERS ARE IN THE CABIN, A SPONSOR SHOULD BE IN THE CABIN ALSO. AFTER HOURS DISTURBANCES WILL NOT BE TOLERATED!

CAMPERS MUST NOT BE LEFT UNATTENDED WHILE THE SPONSOR IS IN TEACHERS MEETING OR DINING HALL FELLOWSHIP, AFTER LIGHTS OUT! (SAFETY FIRST)

### YOUR YOUTH CAMP BOARD

Rev. Ronnie Blanks.....Chairman  
Rev. Gene Howell ..... Sec./Trea  
Rev. Gary Parker .....Member  
Rev. Max Courtney.....Member  
Rev. Jim Mertz.....Member  
Rev. Ken Goff.....Superintendent

## GENERAL CAMP RULES

Everyone using these campgrounds shall remember that all property and equipment has been dedicated to God. Please remember this as you use the equipment and facilities in general.

No one shall move any property from one place to another (including property in the cabins) unless given permission by the Youth Camp Board, or their Rep.

You will, at all time, conduct yourselves in a manner that will bring no reproach upon the name and cause of Jesus Christ.

No water guns are allowed. No container or device shall be used to propel or project any substance upon another person or property. This includes shaving cream, water balloons, paint, etc. Anyone who violates the rule WILL PAY FOR ALL DAMAGES AND WILL BE RESPONSIBLE FOR ALL CLEAN-UP!

There shall not be allowed, in the cabins, such things as: Radios, Stereos, Tape Player, Television or other instruments to receive or reproduce voice or musical communications. (Musical instruments may be accepted, but must first be approved by the Camp Board).

No mixed swimming will be allowed. Bathing suits will be worn INSIDE THE POOL AREA ONLY! Bathrobes must be worn to and from pool. No one will be allowed in the swimming pool any time without a qualified life guard on duty. (THIS INCLUDES ALL CAMPERS, SPONSORS AND WORKERS)!

### PLEASE NOTE THE FOLLOWING INSURANCE STATEMENT:

No one shall leave the campgrounds, after being registered, WITHOUT FIRST NOTIFYING ONE OF THE CAMP BOARD MEMBERS, AND SIGNING A CAMP RELEASE FORM.

## BROCHURE

### FOR THE 1995 SESSION OF

### CAMP NIANGUA

FREE WILL BAPTIST  
YOUTH CAMP

\*\*\*\*\*TO BE HELD\*\*\*\*\*

June 11 through June 23  
July 23 through August 4

### ASSOCIATIONS IN GROUP ONE

Greater Springfield  
Bootheel  
Indian Creek  
Central Western  
Mission  
Cave Springs  
Liberty  
Niangua  
Laclede

Teens: June 18 Through June 23  
Pre-Teens: July 23 Through July 28

### ASSOCIATIONS IN GROUP TWO

Greater Kansas City  
Mid. Rivers  
Northwest  
South Central  
Northeast  
St. Louis  
St. Francois  
Southeast

Teens: June 11 Through June 16  
PreTeens: July 30 Through August 4

Missouri State Free Will Baptist Youth Camp, offers its services & facilities to all young people regardless of race, color, national origin, sex or handicap.

CUT AND SAVE FOR YOUR USE

COMES ALIVE IN '95  
**CAMP NIANGUA**



## PLEASE NOTE THE FOLLOWING

The Youth Campgrounds and the equipment thereon has been dedicated to the Lord for use in His service.

(1) No one shall deface, destroy, or diversify any of the property or equipment. Anyone doing so will be required to pay for damages.

(2) No one shall bring/use tobacco, narcotics, or alcoholic beverages on the campgrounds. Those who do, may be expelled from the camp and refused further privileges.

(3) No profanity shall be tolerated BY ANYONE AT ANY TIME!

(4) THE CAMP DRESS CODE IS AS FOLLOWS:

A. CLASS & ACTIVITY TIME: Girls & women may wear dresses, skirts or split-skirts, that cover the knees or full-length jeans or slacks. Blouses, shirts or sweaters must be full length & cover the shoulder. No spaghetti strap, tank-top etc.

B. WORSHIP TIME: Girls & women may wear dresses or skirts that cover the knees. Blouses or sweaters must be full length & cover the shoulder. No spaghetti strap, tank-top etc.

C. CLASS & ACTIVITY TIME: Boys & men may wear full length slacks or jeans. Shirts are to be full length and cover the shoulder. NO FISH NET, MUSCLE SHIRTS, TANK-TOP, ETC.

D. WORSHIP TIME: Boys & men may wear full length slacks or jeans. Shirts are to be full length & cover the shoulder. NO FISH NET, MUSCLE SHIRTS, TANK-TOPS, ETC.

IT IS STRONGLY SUGGESTED THAT EVERYONE SHOWER & WEAR CLEAN CLOTHES TO EACH WORSHIP SERVICE.

SWEAT PANTS ARE NOT ACCEPTABLE FOR ANYONE TO WEAR AT CAMP.

ALL GARMENTS WORN AT CAMP MUST BE LOOSE FITTING & MODEST.

Please come to the Tabernacle prepared to participate in worship!

\*\*\*\*\*  
\*\*\*\*\*

## SPECIAL REGULATIONS, PLEASE NOTE!

(1) All workers at the camp will work under the supervision & control of the Youth Camp Board.

(2) The list of safety rules given by playground supervisor must be observed.

(3) Attendance at all classes WILL BE REQUIRED, unless excused by the General Camp Director.

(4) No one will be on the playground until the call for PLEDGE TO THE FLAG (7:30 A.M.), except to go to the restrooms.

(5) Everyone is required to sign the agreement on the registration form, that they will fully obey all rules governing the camp. **EVERYONE WILL BE EXPECTED TO ABIDE BY THEIR PROMISE!**

(6) No teenager shall serve as a sponsor.

(7) Each church sending campers shall have, at least, one sponsor for the boys and one sponsor for the girls. No campers shall be registered or assigned to a cabin, by the registrar, without a sponsor!

(8) All campers and workers and sponsors are required to attend the Evening Worship Service, unless excused by the Camp Director, Due To Sickness. (THIS MEANS EVERYONE!)

(9) Due to State Health Regulations, no unauthorized people will be allowed in the kitchen area.

(10) No special menus (diet, etc.) will be prepared by those working in food-service. (Please Don't Ask).

(11) The First Aid Center will be closed from 9:00 - 12:00 each morning. In case of emergency, contact the General Director or one of the Youth Camp Board Members.

(12) Pre-registration will be required by all campers. This year the registration forms and brochures are being published in the Gem. Also a copy of each is being sent to everyone who has attended camp in the last few years. Please make as many copies as necessary, so everyone attending from your church will have a registration form & brochure!

(13) An EMERGENCY MEDICAL STATEMENT ON THE REGISTRATION FORM MUST BE SIGNED BY A PARENT OR LEGAL GUARDIAN, BEFORE A CHILD CAN BE ADMITTED TO CAMP.

**PLEASE NOTE:** The Schedule on the following page is to be followed by (all) unless altered by the Youth Camp Board. All Sponsors, please note & keep a copy of the schedule in your cabin.

\*\*\*\*\*  
\*\*\*\*\*

## (SUNDAY SCHEDULE ONLY)

2:00	p.m.	Registration
5:15	p.m.	Evening Meal
7:30	p.m.	Get Ready Time
8:00	p.m.	Worship Time
10:00	p.m.	Free Period
10:00-10:30	p.m.	Cabin Devotion
10:30	p.m.	LIGHTS OUT

\*\*\*\*\*

## THE DAILY SCHEDULE

7:00 - 7:30	a.m.	Rise & Shine
7:30 - 7:45	a.m.	Salute The Flag
7:45 - 8:30	a.m.	Breakfast
8:30 - 9:00	a.m.	Workers Meeting
9:00 - 9:30	a.m.	Morning Devotion
9:35 - 10:15	a.m.	Class One
10:15 - 10:45	a.m.	Break Time
10:45 - 11:30	a.m.	Class Two
11:30 - 12:00	noon	Announcements
12:00 - 1:00	p.m.	Lunch
1:00 - 2:30	p.m.	Girls Swimming
2:30 - 3:30	p.m.	Womens Swimming
3:30 - 5:00	p.m.	Boys Swimming
5:00 - 6:00	p.m.	Mens Swimming

1:00 - 5:15	p.m.	Supervised Play
5:15 - 6:15	p.m.	Evening Meal
6:15 - 6:45	p.m.	Supervised Play
6:45 - 7:15	p.m.	Get Ready Time
7:15	p.m.	Worship
10:00 - 10:30	p.m.	Free Period
10:30	p.m.	Cabin Devotion
	p.m.	Lights Out

## SCHEDULE FOR CRAFT CENTER

Pre Camper Age (a.m.)	10:10 - 10:30
Boys	1:00 - 2:00
Adults (Tole & Regular)	2:00 - 3:00
Girls	3:00 - 5:00

(Check With Craft Director For Prices)

\*\*\*\*\*

## SUNDAY THRU THURSDAY, TEENS ONLY

9:30 - 10:30	p.m.	Late Night Activity
10:30 - 11:00	p.m.	Cabin Devotion
11:00	p.m.	Lights Out

\*\*\*\*\*

## SCHEDULE FOR FRIDAY ONLY

7:00 - 8:00	a.m.	Rise & Shine
		(Pack-up, Load-up & Clean-up cabins)
8:00 - 9:00	a.m.	Worship
9:00 - 9:15	a.m.	Announcements
9:15	a.m.	Brunch & Departure

**SPONSORS:** Close all windows, turn off lights/fans etc. & shut doors to cabin.

\*\*\*\*\*  
\*\*\*\*\*

CUT AND SAVE FOR YOUR USE

# CAMP NIANGUA

# JESUS CHRIST IS AWESOME



NO CHILD CAN BE ADMITTED TO CAMP WITHOUT THE FOLLOWING INFORMATION AND PERMISSION GIVEN BY PARENT OR LEGAL GUARDIAN.

EMERGENCY MEDICAL STATEMENT! "I, \_\_\_\_\_ (Parent/Legal guardian), by my signature below, hereby authorize the Youth Camp Board, or their representative(s) to authorize such emergency treatment necessary to maintain the life or health of my child whose name appears upon this form. I am signing this statement in the presence of a witness, and by my signature, I authorize the attending physician and/or hospital staff to treat my child for any injury or condition of health that would threaten His/Her life or well being."

FATHER OF CAMPER \_\_\_\_\_ (signature)

MOTHER OF CAMPER \_\_\_\_\_ (signature)

"I, \_\_\_\_\_ do hereby swear that I have seen the parents/legal guardian of this camper, read the above EMERGENCY MEDICAL STATEMENT. I have personal knowledge that the person/s who have signed this EMERGENCY MEDICAL STATEMENT are indeed, the parents/legal guardian of this camper. I do hereby further swear that I have personally witnessed the person whose signature/s appear above, place their signature/s upon this form. I further swear that I am an adult and of sound mind."

WITNESS: \_\_\_\_\_ (signature)

Please list below the following information:

Family Physician's Name: \_\_\_\_\_

Physician's Phone Number (\_\_\_\_\_) \_\_\_\_\_ (area code) (number)

Please list below, names and phone numbers where you may be reached in case of an emergency:

1. \_\_\_\_\_ Ph. \_\_\_\_\_
2. \_\_\_\_\_ Ph. \_\_\_\_\_
3. \_\_\_\_\_ Ph. \_\_\_\_\_

CHILDREN MAY MAKE PHONE CALLS FROM CAMP, PROVIDING THEIR SPONSOR IS WITH THEM WHILE THE CALL IS BEING MADE. ONLY COLLECT OR CREDIT CARD CALLS ARE PERMITTED.

ALSO CHILDREN MAY RECEIVE IN-COMING CALLS BUT MOST OF THE TIME IT IS DIFFICULT TO FIND THE CHILD QUICKLY, THEREFORE IT IS SUGGESTED, WHEN YOU CALL, LEAVE A MESSAGE FOR YOUR CHILD AND THEY WILL GET BACK WITH YOU AT THEIR EARLIEST OPPORTUNITY.

SHOULD YOUR CHILD HAVE TO LEAVE THE CAMPGROUNDS BEFORE THE SCHEDULED DEPARTURE, SICKNESS ETC., IT WILL BE YOUR RESPONSIBILITY TO MAKE ARRANGEMENTS TO PICK THEM UP.

\*\*\*\*\*  
\*\*\*\*\*

## PLEASE NOTE THE FOLLOWING!

### THE CAMP DRESS CODE IS AS FOLLOWS:

1. CLASS & ACTIVITY TIME : Girls & women may wear dresses, skirts or split skirts, that cover the knees or full-length jeans or slacks. Shirts, blouses or sweaters must be full length & cover the shoulder. No spaghetti strap, tank-top etc.
2. WORSHIP TIME: Girls & women may wear dresses or skirts that cover the knees. Blouses or sweaters must be full length & cover the shoulder. No spaghetti strap, tank-top, etc.
1. CLASS & ACTIVITY TIME: Boys & men may wear full length slacks or jeans. Shirts are to be full length & cover the shoulder. No fish net, tank-top/muscle shirt, etc.
2. WORSHIP TIME: Boys & men may wear full length slacks or jeans. Shirts are to be full length & cover the shoulder. No fish net, tank-top/muscle shirt, etc.

SWEAT PANTS ARE NOT ACCEPTABLE FOR ANYONE TO WEAR AT CAMP.

WE SUGGEST ALL GARMENTS WORN AT CAMP BE, "LOOSE FITTING. "PLEASE BRING ONLY THE APPAREL THAT IS ACCEPTABLE BY THE ABOVE STANDARDS.

IT IS STRONGLY SUGGESTED THAT EVERYONE SHOWER & WEAR CLEAN CLOTHES TO EACH WORSHIP SERVICE.

By placing your signature upon the following line, you are making a promise to abide by the rules of the Youth Camp to the very best of your ability. No one can be registered as a camper, without signing!

"I, \_\_\_\_\_, have read carefully the rules and Name of camper (please print) regulations of the Youth Camp and do hereby make a pledge to keep these rules and regulations to the very best of my ability. I also understand that disciplinary action may be taken against me should I break them."

SIGNATURE OF CAMPER: \_\_\_\_\_

### THE YOUTH CAMP BOARD

REV. RONNIE BLANKS, CHAIRMAN ..... PHONE (417) 256-5693  
REV. GENE HOWELL, SEC/TREA. .... PHONE (816) 331-1932  
REV. GARY PARKER, MEMBER ..... PHONE (314) 774-6412  
REV. MAX COURTNEY, MEMBER ..... PHONE (417) 865-6617  
REV. JIM MERTZ, MEMBER ..... PHONE (314) 441-8970

STATEMENT FROM THE BOARD: We look forward to serving you, to the best of our ability. We want to provide a safe, Christian atmosphere for all who attend the Missouri State Free Will Baptist Youth Camp. To do this, we must have the full cooperation of every one. We pray souls will be saved, and every saved soul, will grow in the grace and knowledge of Jesus Christ, WHOSE CAMP THIS IS!

\*\*\*\*\*  
\*\*\*\*\*

----- CUT AND SAVE FOR YOUR USE -----

**CAMP NIANGLA**  
**BUILT ON THE ROCK OF AGES**



**"SPECIAL INSURANCE NOTICE, PLEASE READ WITH CAUTION"**

The Youth Camp Insurance Carrier is Church Mutual Insurance Company. The Insurance coverage provided by the camp is called, Excess Insurance. The following is a brief description of coverages provided by Church Mutual.

1. Coverage is (ONLY) for accidents. There is no coverage for any charges due to sickness.
2. Should an accident occur, all charges must be submitted to the campers (PERSONAL/PRIVATE) insurance carrier.
- A. If there is a deductible to be paid to the personal/private insurance carrier, Camp insurance will pay the deductible.
- B. If there is an unpaid balance to the personal/private insurance carrier, Camp insurance will pay any unpaid balance, up to its limits.
- C. If there is (NO) personal/private insurance, Camp Insurance shall serve as primary carrier and pay up to its limits.
3. Please keep in mind, however, any coverage by Camp Insurance will only be possible for charges regarding accident.

A. PLEASE NOTE: THE INSURANCE COVERAGE PROVIDED BY MISSOURI STATE F.W.B. YOUTH CAMP IS VERY EXPENSIVE AND LIKE MOST INSURANCE CARRIERS, THEY ARE VERY STRICT REGARDING INFORMATION SUBMITTED TO THEM. THEREFORE FAILURE OR REFUSAL ON YOUR PART TO SUPPLY ANY NEEDED INFORMATION, WILL AUTOMATICALLY MAKE YOU RESPONSIBLE FOR ANY & ALL OF THE UNPAID BALANCE.

4. Since all claims must be submitted to your private insurance carrier first, it is necessary that you submit the name, address & phone number, along with your policy number, on the lines provided below. If no personal insurance coverage, please indicate on the appropriate line below.

Name Of Personal Insurance Provider: \_\_\_\_\_

\_\_\_\_\_ Street \_\_\_\_\_

City \_\_\_\_\_, State \_\_\_\_\_ Zip \_\_\_\_\_

Phone (\_\_\_\_) \_\_\_\_\_ Policy No. \_\_\_\_\_

Please check on line provided below, if there is no personal/private insurance coverage: \_\_\_\_\_

The Youth Camp Board would like to thank you for your cooperation regarding this very important insurance issue.

\*\*\*\*\*  
\*\*\*\*\*

**PRE-REGISTRATION FORM**

**1995 SESSION**

**CAMP NIANGUA FREE WILL BAPTIST YOUTH CAMP**

HCR - 83, BOX 22, NIANGUA, MO. 65713

PHONE: (417) 473-6444

DATE \_\_\_\_\_ PLEASE (PRINT) NAME/ADDRESS LEGIBLY.

NAME \_\_\_\_\_ AGE \_\_\_\_\_ SEX \_\_\_\_\_

ADDRESS \_\_\_\_\_

CITY \_\_\_\_\_ STATE \_\_\_\_\_ ZIP \_\_\_\_\_

PHONE NO. (\_\_\_\_) \_\_\_\_\_ FRIEND \_\_\_\_\_

CHURCH \_\_\_\_\_ F.W.B. Yes \_\_\_ No \_\_\_

If not F.W.B., what F.W.B. church have you come with? \_\_\_\_\_

Have you been treated by a physician within the past 6 months? \_\_\_\_\_

Brief nature of treatment? \_\_\_\_\_

Are you taking medication now? \_\_\_\_\_ Do you have it with you? \_\_\_\_\_

Are you allergic to any medicine? \_\_\_\_\_ What medicine? \_\_\_\_\_

Do you have allergies to weeds, pollen, insects, etc? \_\_\_\_\_

Please list what you are allergic to: \_\_\_\_\_

All medication must be dispensed by the Camp Medical Attendant and stored at the First Aid Center. Your medication will be dispensed according to the directions on the bottle or prescription. This is done to insure the safety of your child as well as the safety of others.

**EMERGENCY MEDICAL ATTENTION!** In the event of a medical emergency, a Youth Camp Representative will try to contact the parents of the camper. There are, however, times when this is not possible. For this reason, you are (REQUIRED) TO FILL OUT, IN FULL, THE EMERGENCY MEDICAL STATEMENT ON THE FOLLOWING PAGE. NO CHILD CAN BE REGISTERED AT CAMP WITHOUT THIS INFORMATION.

**PLEASE NOTE:**  
WE ARE REQUIRED BY LAW, TO COLLECT THE FOLLOWING INFORMATION REGARDING RACIAL/ETHNIC IDENTIFICATION. PLEASE CHECK (ONE)!

American Indian or Alaskan Native: \_\_\_\_\_ Asian or Pacific Islander: \_\_\_\_\_  
Black: \_\_\_\_\_ Hispanic: \_\_\_\_\_ White: \_\_\_\_\_

\*\*\*\*\*  
\*\*\*\*\*

----- CUT AND SAVE FOR YOUR USE -----

**CAMP NIANGUA  
SEE YOU THERE!  
SEE YOU THERE!  
CAMP NIANGUA**



# THE TOUGH TEACHINGS OF JESUS

## THE ULTIMATE TEACHER'S PERSONAL STYLE

by Vernon C. Grounds

"No one ever spoke the way this man does" (John 7:46). That was the admiring tribute of the temple guards who had been sent by the religious hierarchy to arrest Jesus, an assignment they failed to carry out.

That reaction to our Lord's teaching has been almost universal. People who heard Him in first-century Palestine, people who through the ages have read His words in the Gospels, people down to the present day – all have been tremendously impressed by what He said and the way He said it.

### What Makes Jesus' Teachings So Striking?

Drawing on the rich resources of Semitic tradition and especially the Old Testament, Jesus used questions, aphorisms, antitheses, paradoxes, parables, and proverbs as He communicated His Father's truth to engrossed crowds or magnetized individuals. Endowed with a creative imagination, He had a vividly picturesque speech style, full of verbal pictures that imprinted themselves on the mind. Aside from these qualities, a cluster of characteristics stamped His teaching as strikingly unique.

For one thing, He spoke with authority (Matthew 7:27, Luke 4:36), a commanding conviction and persuasive power that compelled multitudes to listen. There was nothing tentative or indecisive about His discourses, His illumination comments, and His stated beliefs.

Secondly, He spoke with originality. Whether talking to one person or preaching to thousands, He taught with remarkable freshness, avoiding any appeal to the weary shibboleths and timeworn clichés of His rabbinic predecessors.

The teaching of Jesus was characterized by simplicity. It was totally free from technical terms and academic jargon. Concrete, not abstract, His rhetoric was easily understandable, sparkling with graphic allusions to flowers, children, farming, sheep, bread, vineyards, fig trees, fishing, clouds, water, and

countless other elements of everyday life. Commonplace objects and experiences became the means of illuminating the mysteries of the invisible world which sustains and pervades our physical world.

Yet at the same time, His teaching was marked by profundity. His fascinating parables, pithy epigrams, and enlightening flashes of humor revealed truth with shining clarity; but much of what He said had a depth of meaning that His hearers often did not realize.

Hearers could no doubt shrug their shoulders if somewhat puzzled by the deliberately opaque elements in our Lord's rhetoric. But earnest truth seekers were inspired to pursue the quest for deeper knowledge. Even though His words have been minutely analyzed by generation after generation of devout scholars, they remain inexhaustible.

Jesus' teaching was also stamped by universality. It appeals to people on every level of culture in every country and every century. It intrigues the minds of philosophers, captivated the hearts of ordinary folk, and transformingly impacts lives everywhere. Jesus is thus what He claimed to be – the Light of the world.

His teaching is marked by finality. Out of all the innumerable words spoken by human beings since the beginning of history, breathed out and forgotten, His have somehow survived. More than that, they continue to exert a powerful influence on men and women because they are an unimprovable source of insight concerning the ultimate issues of life, death, and eternity.

No matter, then, how immense our progress in all branches of learning and science may have been and will be, the teaching of Jesus can never become irrelevant or outmoded. His own prediction will be validated till the end of time: "Heaven and earth will pass away, but my words will never pass away" (Mark 13:31).

*EDITOR'S NOTE: This article was furnished by the David C. Cook Publishing Co.*

## Open House At Free Will Baptist Family Ministries

We would like to extend a special invitation to all of you who will be passing through East Tennessee on your way to the 1995 National Association in Charlotte, NC. Our campus in Greeneville, TN (which is located about four hours northwest of Charlotte) will host an Open House. Our six residential homes and our PATH shelter will be open for tours, as well as all our other buildings. Seeing this ministry firsthand will certainly be an encouragement to you. As you fellowship with our children and our staff, it will become obvious to you that God is accomplishing great things in the lives of our children. So, make plans now to drop in and see this ministry up close. We will be very happy to talk with you about all the growth that is taking place and the four parts of this ministry.

### FWB Family Ministries

Trula Cronk Home for Children  
The PATH Shelter  
The Stanley Foster Care Program  
The OAKS Family Conference  
Center and Camp

We hope to see you on July 15th! Please feel free to call our Development Office at (615) 639-9449 for more information. We will be glad to send you a map with directions to our campus.

## Grace Seeks Pastoral Candidate

Grace Free Will Baptist Church, Rocky Mount, North Carolina, is seeking an interim or a full-time pastor. The church was founded in May 1960 by the Rev. Robert J. Durham. He led the church for more than 30 years. The church started the Grace Christian School in 1977 and it continues to operate K-12.

Any potential candidates, whether interim or full-time, should forward a letter outlining their ministry to: Search Committee, Grace Free Will Baptist Church, 509 Kingston Avenue, Rocky Mount, North Carolina 27803.





Carol Reid

**COMING SOON!**  
**The 1995**  
**Missouri State Free Will Baptist**  
**WNAC Retreat**

**August 18 - 19, 1995 - Stonecroft Conference Center**

**Theme: "Touching Jesus"**

**Special Guest Speaker: Carol Reid**  
**Nashville, Tennessee**

**WNAC RETREAT PRE-REGISTRATION FORM**  
***For those staying at the Conference Center***

List the ladies that will be staying in the same room (each room has 2 double or queen size beds):

1/Name \_\_\_\_\_  
Address \_\_\_\_\_  
City,State,Zip \_\_\_\_\_  
Phone (\_\_\_\_) \_\_\_\_\_  
Church \_\_\_\_\_

2/Name \_\_\_\_\_  
Address \_\_\_\_\_  
City,State,Zip \_\_\_\_\_  
Phone (\_\_\_\_) \_\_\_\_\_  
Church \_\_\_\_\_

3/Name \_\_\_\_\_  
Address \_\_\_\_\_  
City,State,Zip \_\_\_\_\_  
Phone (\_\_\_\_) \_\_\_\_\_  
Church \_\_\_\_\_

4/Name \_\_\_\_\_  
Address \_\_\_\_\_  
City,State,Zip \_\_\_\_\_  
Phone (\_\_\_\_) \_\_\_\_\_  
Church \_\_\_\_\_

In order to accommodate the maximum number of ladies attending, there must be 4 ladies to each room. Rooms are assigned as reservations are received. **Reservations will not be accepted before June 19, 1995.**

Cost is \$40.00 per person (which includes food, lodging and registration fee). **Total Amount Enclosed: \$\_\_\_\_\_**

**MAKE CHECKS PAYABLE TO: MISSOURI STATE WOMAN'S AUXILIARY (no cash please). THERE ARE NO REFUNDS! PLEASE SEND A SELF-ADDRESSED STAMPED ENVELOPE WITH THIS FORM TO: Shirley Jackson, 13 Highland Drive, St. Charles, MO 63303. Telephone (314) 946-7248.**



**Missouri State Free Will Baptist  
WNAC Retreat  
August 18 - 19, 1995  
Stonecroft Conference Center (near Branson, MO)**

**PRE-REGISTRATION FORM  
For those not staying at the Conference Center**

List the ladies attending the retreat, but providing their own accommodations. Check which meals they will be eating at Stonecroft. The cost for registration and all meals will be \$31.75.

1/Name \_\_\_\_\_

Address \_\_\_\_\_

City, State, Zip \_\_\_\_\_

Phone (\_\_\_\_) \_\_\_\_\_

Church \_\_\_\_\_

\_\_\_\_ Registration Fee      \$15.00

\_\_\_\_ Friday Dinner      \$7.25

\_\_\_\_ Saturday Breakfast      \$ 4.25

\_\_\_\_ Saturday Lunch      \$5.25

2/Name \_\_\_\_\_

Address \_\_\_\_\_

City, State, Zip \_\_\_\_\_

Phone (\_\_\_\_) \_\_\_\_\_

Church \_\_\_\_\_

\_\_\_\_ Registration Fee      \$15.00

\_\_\_\_ Friday Dinner      \$7.25

\_\_\_\_ Saturday Breakfast      \$ 4.25

\_\_\_\_ Saturday Lunch      \$5.25

3/Name \_\_\_\_\_

Address \_\_\_\_\_

City, State, Zip \_\_\_\_\_

Phone (\_\_\_\_) \_\_\_\_\_

Church \_\_\_\_\_

\_\_\_\_ Registration Fee      \$15.00

\_\_\_\_ Friday Dinner      \$7.25

\_\_\_\_ Saturday Breakfast      \$ 4.25

\_\_\_\_ Saturday Lunch      \$5.25

4/Name \_\_\_\_\_

Address \_\_\_\_\_

City, State, Zip \_\_\_\_\_

Phone (\_\_\_\_) \_\_\_\_\_

Church \_\_\_\_\_

\_\_\_\_ Registration Fee      \$15.00

\_\_\_\_ Friday Dinner      \$7.25

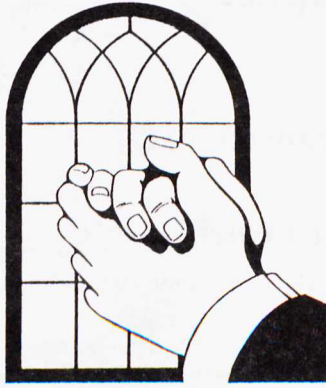
\_\_\_\_ Saturday Breakfast      \$ 4.25

\_\_\_\_ Saturday Lunch      \$5.25

**TOTAL AMOUNT ENCLOSED \$ \_\_\_\_\_**

MAKE CHECKS PAYABLE TO: MISSOURI STATE WOMAN'S AUXILIARY (no cash please). THERE ARE NO REFUNDS! PLEASE SEND A SELF-ADDRESSED STAMPED ENVELOPE WITH THIS FORM TO: Shirley Jackson, 13 Highland Drive, St. Charles, MO 63303. Telephone (314) 946-7248.





## Special Prayer Requests from Home Missions

1. Pray for **Mrs. Gail Fender**, home missionary wife in Knoxville, Tennessee, who is now taking chemotherapy treatments for cancer in the lungs and bronchial tubes.
2. Pray for **Howard Gwartney**, Mesa, Arizona, as the city is still requiring more than \$20,000 worth of street lights to be installed and landscaping before it will grant the church a final occupancy permit.
3. Pray for **Levan Hubbard**, Maumelle, Arkansas, who is recovering from a broken leg, and for **Jane Keen**, Anderson, South Carolina, who has a cast on her foot from arthritis.
4. Pray for **Miguel Vera**, San Juan, Puerto Rico, who is working to finalize the purchase of land on which to build a church.

Free Will Baptist Home Missions, P.O. Box 5002, Antioch, TN 37011-5002.

## New Work Starting in Salt Lake City

Rev. Bill Phillips, a tentmaker missionary to Rupert, Idaho, is seeking names of any Free Will Baptists who may be living in the Salt Lake City, Utah area.

Larry Bledsoe, who lives in Ogden, Utah, drives 2 1/2 hours to attend the Free Will Baptist Church in Rupert, Idaho. There are no Free Will Baptist churches in Utah. At this time, Rev. Phillips and Brother Bledsoe are holding Bible studies in Bledsoe's home twice a month. They desire to start a Free Will Baptist Church in Utah.

Please send names to Rev. Bill Phillips, 322 S. 4th St., Rupert, ID 83350; or call 208-436-4730.

## Sunday School Averages October 1994 - March 1995

CHURCHES	OCT	NOV	DEC	JAN	FEB	MAR
Beacon				65	70	78
Bethel - Festus	70	71	63	77	80	84
Calvary Chapel	90		77	86	104	94
Calvary Fellowship	303	228	239			
Cape Girardeau	109	83	98	76	78	107
Columbia	17	13	13		14	17
Cuba	107	111	117	102	109	122
DeSoto	177	184	183	164	179	235
Farmington	361	337	348	315	311	
Fredericktown	42	42	40	34	38	
Hannon	80	82	90	85	78	87
Harmony	56	54				57
Hartville	85	89	102	94	96	91
Hazel Creek	70	74	67	74	72	
Hopewell	29	33	35	28	29	31
Houston	43	45	46	39	50	58
Jones Creek	13	13	11	10	7	8
Lebanon First	115	124	134	117	121	122
Mill Creek	49	50	62	48	50	50
Myrtle	31	28	37	33	48	42
Oskaloosa				17	17	
Ozark	64	77	79			
Park Hills First	136	125	131	120		140
Parkview	51	49				
Richwoods	60	45				
Rock Chapel	69	72	76	67	66	65
Springfield First	107	102		105	103	
Thayer	139	126	144		139	170
United, West Plains	211	219	236	203		237
Unity	42	47	41			36
Verdella	70	69	80	67	65	69
Willow Springs	71	67		57	63	61

The above is only a partial listing - there are 177 Free Will Baptist churches in Missouri. Each church is encouraged to send in the Sunday School average each month.

## Financial Information

### MARCH 1995

#### COOPERATIVE DISBURSEMENTS

18.50% Mo. State Home Missions Board	\$7,005.58
17.50% Executive Office	6,626.90
3.50% General Fund	1,325.38
8.50% Youth Camp Bd.	3,218.78
2.50% Youth Ministries Bd.	946.70
2.50% C.E. Board	946.70
2.50% Sr. Adult Ministries Board	946.70
9.00% Mo. State Retirement Program	3,408.12
30.50% Nat'l. Ministries, Hillsdale & Calif. Christian College	11,549.74
Foreign Missions Board	
National Home Missions Board	
Same Allocation:	
Free Will Baptist Bible College	
Hillsdale Free Will Baptist College	
Executive Department	
Layman's Board	
Radio & TV Commission	
Theological Commission	
Historical Commission	
Board of Retirement & Insurance	
1.00% Calif. Christian College	
(\$115.50 included in \$11,549.74)	

#### 5.00% Mo. State Conference

Center Fund ..... 1,893.00

**TOTAL ..... \$37,868.00**

"...Oh, give thanks to the Lord, for He is good!" Ps. 106:1. God has given us another good month, and He is to be praised. The faithfulness of the Pastors and Churches in Missouri make it possible for us to have a part in carrying out the Great Commission. As we continue to work together, we will see the lost saved and the saints edified.

The allocation for National Ministries is designated this year, with FWBBC and Hillsdale receiving an equal amount. California Christian College will continue to receive 1%.

### MARCH 1995 COOPERATIVE

Bailey Chapel	\$ 100.00
Bailey Chapel - Tunas	95.00
Belton	309.48
Bethel - Northview	182.40
Black Oak	254.47
Cabool	335.33



Calvary Chapel - Buffalo.....	368.17
Cape Girardeau 1st.....	716.38
Carthage.....	225.00
Central - Grandview.....	716.38
Central - Grandview.....	884.53
Clifton Ch. & S.S.....	80.70
Clifton S.S. - Thayer.....	75.15
Columbia.....	105.00
Copper Mines - Fredericktown.....	265.30
Crossroads - Richland.....	189.45
Crossroads - Wentzville.....	300.00
Cuba.....	508.00
Cuba.....	502.00
DeSoto 1st.....	1,000.00
Eastern Gate.....	298.08
F & H - Aurora.....	73.80
Faith & Hope - Aurora.....	87.30
Faith & Hope - W. Springs.....	78.60
Farmington 1st.....	2,025.05
Fordland.....	566.04
Fourth - St. Louis.....	200.00
Fredericktown 1st.....	269.00
Freeman Chapel.....	294.30
Friendship - Branson.....	375.75
Grace - Arnold.....	1,136.00
Grace - Arnold.....	1,046.00
Grant Ave. - Springfield.....	778.09
Hannibal.....	150.00
Hannon - Liberal.....	499.59
Harmony - Parkville.....	348.00
Hartville.....	478.39
Hazel Creek - Kirksville.....	586.91
Hopewell.....	145.00
Houston 1st.....	299.27
Houston 1st.....	353.66
Hurryville - Park H.....	364.71
Jones Chapel.....	551.01
Joplin 1st.....	519.38
Kingsway.....	311.33
Kingsway.....	244.76
Kingsway - Springfield.....	246.56
Kirksville 1st.....	169.54
Koshkonong.....	142.86
Leadington 1st.....	491.60
Lebanon 1st.....	832.35
Liberty - Pburg.....	207.73
Lone Star - Seymour.....	55.80
Marshfield.....	318.10
Merls Chapel.....	200.52
Mill Creek - Fredericktown.....	272.78
Mine La Motte.....	43.75
Monett 1st.....	505.14
Mt. Pisgah - Cabool.....	225.00
Mt. Zion.....	59.30
Mtn. Grove 1st.....	1,309.01
Myrtle.....	169.01
Myrtle.....	192.52
New Harmony.....	20.70
New Harmony - Greentop.....	16.21
New Hope - Fredericktown.....	20.00
New Life Fellowship.....	619.15
New Rock Springs - Cabool.....	116.00
New Rock Springs - Cabool.....	90.00
North 5 - Lebanon.....	145.86
Number One - Huggins.....	46.56
Number One - Huggins.....	53.37
O'Fallon 1st.....	520.88
Oak Hill - Fredericktown.....	77.22
Oak Hill - Union.....	670.68
Oak Hill - Union.....	576.54
Oskaloosa.....	225.73
Overland.....	100.00
Ozark 1st.....	586.28
Park Hills 1st.....	522.63
Parkview - Desloge.....	403.00
Pleasant Hill - Thayer.....	74.73
Pleasant Ridge - Urbana.....	84.00
Potosi 1st.....	122.56
Riverview.....	691.16
Rock Chapel - Norwood.....	373.31
Rolla 1st.....	62.36
Royal Oak - Alton.....	136.00
Seymour.....	115.00
Smyrna.....	190.00
Springfield 1st.....	890.74
Stockton.....	131.33
Thayer.....	795.00
Trinity - Bridgeton.....	976.91
Twin Oak - Fredericktown.....	871.66
Tyrone.....	67.00
Union Grove S.S. Nor.....	219.00
Union - Success.....	60.00
Verdella - Liberal.....	323.13
Victory Hill - Mansfield.....	63.54
Victory - Alton.....	186.27
Victory - K.C.....	354.05
Waynesville 1st.....	320.91
Wilderness - Fremont.....	380.37
Willow Springs - Mtn. Grove.....	183.13
Wolf Creek.....	368.30
Wolf Creek - Mansfield.....	282.40
<b>TOTAL.....</b>	<b>\$37,868.00</b>

#### STATE HOME MISSIONS

Belton.....	\$ 13.38
Bethel - Festus.....	54.00
Bethel - Festus.....	300.00
Central - Grandview.....	10.00
Central - Grandview.....	10.00
Cuba.....	149.30
Faith & Hope - Aurora.....	55.14
Faith & Hope - Aurora.....	38.62
Faith & Hope - W. Springs.....	25.00
Farmington 1st.....	10.00
Fourth - St. Louis.....	10.00
Grace - Arnold.....	25.00
Grace - Arnold.....	30.00
Grant Ave. - Springfield.....	29.00
Hannon - Liberal.....	249.90
Kingsway - N. Warrick.....	5.00
L. Wormington.....	30.00
Lebanon 1st.....	10.00
Lebanon Bible & Book Store.....	190.00
Marshfield.....	31.81
Mtn. Grove 1st.....	25.00
Myrtle.....	57.00
Myrtle.....	47.00
New Life - Monett.....	53.15
New Life - Monett.....	55.40
O'Fallon 1st.....	52.50
Ozark 1st.....	10.00
Pleasant Ridge - Urbana.....	20.00
Rock Chapel - Norwood.....	81.10
Thayer.....	45.00
Trinity - Bridgeton.....	35.00
Victor's Cl - DeSoto.....	10.00
Victory - K.C.....	5.00
<b>TOTAL.....</b>	<b>\$1,772.30</b>

#### FOREIGN MISSIONS

A. Chapman.....	\$ 10.00
A. Chapman.....	10.00
B. King.....	70.00
B. Rogers.....	20.00
B. Thebeau.....	5.00
B. Thebeau.....	5.00
Belton.....	160.00
Bethel - Festus.....	230.00
Buffalo 1st.....	50.00
C. Thompson.....	25.00
Calvary Chapel - Buffalo.....	95.00
Calvary Chapel - Buffalo.....	75.00
Calvary Fellowship.....	841.66
Calvary Fellowship.....	582.76
Carthage.....	91.00
Central - Grandview.....	260.00
Central - Grandview.....	11.00
Central - Grandview.....	11.00
Central - Grandview.....	270.00
Columbia.....	25.00
Cuba.....	74.66
D. Lewis.....	10.00
DeSoto 1st.....	350.00
Eastern Gate.....	129.61
F & H - Aurora.....	55.14
Faith & Hope - Aurora.....	38.63
Faith & Hope - W. Springs.....	150.00
Faith - St. Louis.....	25.00
Faith - St. Louis.....	50.00
Farmington 1st.....	155.65
Farmington 1st.....	308.33
Fordland.....	126.00
Fourth - St. Louis.....	60.00
Freeman Chapel.....	331.00
Grace - Arnold.....	39.00
Grace - Arnold.....	48.00
Grant Ave. - Springfield.....	461.62
Hannon - Liberal.....	764.59
Hartville.....	95.67
Houston 1st.....	166.00
J. Hoggard.....	22.50
J. Schebaum.....	15.00
JoyMakers - DeSoto.....	10.00
K. Minor.....	10.00
Kingsway - N. Warrick.....	5.00
Kirksville 1st - Child. Ch.....	20.00
Leadington.....	30.00
Leadington.....	30.00
Lebanon 1st.....	30.00
Lebanon 1st.....	50.00
Lebanon 1st - Jr. Ch.....	38.74
M. Chrisman.....	80.00
Marshfield.....	76.24
Merls Chapel.....	200.00
Mission Group - Desloge.....	60.00
Monett 1st.....	533.00
Monett 1st.....	200.00
Mt. Pisgah - Cabool.....	100.00
Mtn. Grove 1st.....	525.00
Myrtle.....	78.00
Myrtle.....	80.00
N. Akeman.....	10.00
N. Ruble.....	50.00
New Harmony.....	103.52
New Harmony - Greentop.....	81.05
New Home - Hartville.....	180.00

New Life Fellowship.....	90.00
Niangua.....	11.00
Niangua.....	44.00
O'Fallon 1st.....	52.50
Oak Grove - Cabool.....	65.00
Oak Grove - Norwood.....	97.56
Ozark 1st.....	90.00
Park Hills 1st.....	209.04
Parkview Mission Group.....	60.00
Parkview - Desloge.....	350.54
Pleasant Ridge - Urbana.....	50.00
Prayer Partners - Grant Ave.....	29.50
R. Garett.....	10.00
Rickwoods 1st.....	20.00
Rock Chapel - Norwood.....	169.50
SE MO Dist. Assoc. FWB.....	25.00
SE MO Dist. Assoc. - Fred.....	25.00
Thayer.....	270.00
Trinity - Bridgeton.....	611.61
Union Mission.....	163.91
Unity - Lebanon.....	100.00
Verdella - Liberal.....	778.12
Victory - K.C.....	215.00
W. Livingston.....	10.00
Waynesville 1st.....	50.00
Wom.n Chr - Grant Ave.....	25.00
<b>TOTAL.....</b>	<b>\$12,526.65</b>

#### NATIONAL HOME MISSIONS

A. Chapman.....	\$ 10.00
A. Chapman.....	10.00
B. King.....	70.00
Belton.....	38.38
Bethel - Festus.....	70.00
Buffalo 1st.....	50.00
Calvary Fellowship.....	169.55
Calvary Fellowship.....	210.00
Carthage.....	77.00
Central - Grandview.....	380.00
Central - Grandview.....	65.00
Columbia.....	10.00
DeSoto 1st.....	100.00
Eastern Gate.....	10.00
F. Rogers.....	10.00
Faith & Hope - W. Springs.....	25.00
Farmington 1st.....	54.65
Fordland.....	245.62
Fourth - St. Louis.....	82.00
Grace - Arnold.....	233.00
Grace - Arnold.....	182.50
Grant Ave. - Springfield.....	463.81
Hannon - Liberal.....	54.96
J. Hoggard.....	27.50
J. Rader.....	20.00
Jones Creek Road - Ditt.....	10.00
Jones Creek Road.....	30.00
Leadington.....	20.00
Leadington.....	120.00
Lebanon 1st.....	10.00
M. Kenuam.....	10.00
M. Nosser.....	10.00
Marshfield.....	124.32
Mission Group - Desloge.....	10.00
Mt. Pisgah - Cabool.....	50.00
Mtn. Grove 1st.....	45.00
Myrtle.....	90.00
Myrtle.....	75.00
New Harmony.....	103.52
New Harmony - Greentop.....	81.05
New Home - Hartville.....	20.00
New Life Fellowship.....	45.00
O'Fallon 1st.....	52.50
Oak Grove - Norwood.....	50.28
Ozark 1st.....	10.00
Park Hills 1st.....	72.26
Parkview Mission Group.....	10.00
Parkview - Desloge.....	10.00
R. Gamble.....	15.00
R. White.....	10.00
R. White.....	10.00
Richwoods 1st.....	32.00
Rock Chapel - Norwood.....	220.00
S. Hart.....	60.00
SE MO Dist. Assoc. FWB.....	25.00
SE MO Dist. Assoc. - Fred.....	25.00
Thayer.....	185.00
Trinity - Bridgeton.....	85.00
Verdella - Liberal.....	20.00
Victory - K.C.....	65.00
W. Livingston.....	10.00
Waynesville 1st.....	50.00
Wolf Creek.....	10.00
Wolf Creek - Mansfield.....	10.00
<b>TOTAL.....</b>	<b>\$4,559.90</b>

#### MISSOURI FWB YOUTH CAMP

Hartville.....	\$ 10.00
Myrtle.....	47.00
Buffalo 1st.....	50.00
Thayer.....	40.00
New Home - Hartville.....	10.00
Mission Group - Parkview - Des.....	10.00
Mtn. Grove 1st.....	10.00

Hannon - Liberal.....	15.00
Calvary Fellowship - Fenton.....	25.00
Lebanon Bible & Book Store.....	85.00
Cabool.....	10.00
New Rock Springs - Cabool.....	10.00
Marshfield.....	20.00
New Life - Monett.....	53.15
Mt. Pisgah - Cabool.....	10.00
Billy Hughes.....	500.00
Bethel - Festus.....	55.00
Trinity Baptist - Bridgeton.....	14.00
DeSoto 1st.....	50.00
Willow Springs - Mtn. Grove.....	10.00
Calvary Fellowship - Fenton.....	25.00
Mission Group.....	10.00
Union - Success.....	30.00
Ozark 1st.....	10.00
Park Hills 1st.....	14.50
New Rock Springs - Cabool.....	10.00
<b>New Life - Monett.....</b>	<b>55.40</b>
Myrtle.....	37.00
<b>TOTAL.....</b>	<b>\$1,226.05</b>

#### CHILDREN'S HOME (TN)

Myrtle.....	\$ 4.26
New Hope - Fredericktown.....	32.00
Mission Group - Parkview - Des.....	10.00
New Life - Monett.....	53.15
DeSoto 1st.....	75.00
Mission Group.....	10.00
Park Hills 1st.....	5.00
<b>New Life - Monett.....</b>	<b>55.40</b>
Myrtle.....	4.13
<b>TOTAL.....</b>	<b>\$248.94</b>

#### HILLSDALE FWB COLLEGE

Central - Grandview.....	\$ 48.00
Thayer.....	97.50
Verdella - Liberal (Have A Heart).....	100.00
Victory - K.C. (Have A Heart).....	88.23
Hannon - Liberal.....	50.00
Hannon - Liberal (Have A Heart).....	1048.00
Eastern Gate (Have A Heart).....	1012.59
Lebanon 1st (Have A Heart).....	237.00
Eastern Gate.....	59.61
Trinity Baptist - Bridgeton (Heart).....	530.00
Grant Ave. - Springfield.....	258.00
Cuba (Have A Heart).....	553.00
Oak Hill (Have A Heart).....	240.80
Farmington 1st.....	10.00
Farmington 1st.....	141.66
Grace - Arnold.....	500.00
Central - Grandview.....	48.00
<b>TOTAL.....</b>	<b>\$5,022.39</b>

#### FWB BIBLE COLLEGE

Thayer.....	\$ 40.00
Mission Group - Parkview - Des.....	10.00
DeSoto 1st.....	35.00
Grant Ave. - Springfield.....	10.00
Mission Group.....	10.00
Farmington 1st.....	10.00
Farmington 1st.....	133.33
<b>TOTAL.....</b>	<b>\$248.33</b>

#### REV. JOHN McCCLURE

Carthage.....	\$ 17.00
Grace - Arnold.....	15.00
Thayer.....	10.00
4th St. Louis.....	25.00
Monett 1st.....	35.00
Jones Creek Road.....	30.00
Farmington 1st.....	12.01
Grace - Arnold.....	15.00
Jones Creek Road.....	10.00
<b>TOTAL.....</b>	<b>\$169.01</b>

#### CALIFORNIA CHRISTIAN COLLEGE

Farmington 1st.....	\$25.00
---------------------	---------

#### YOUTH MINISTRIES BOARD

Calvary Fellowship - Fenton.....	\$ 6.50
Lebanon Bible & Book Store.....	25.00
Calvary Fellowship - Fenton.....	6.50
<b>TOTAL.....</b>	<b>\$38.00</b>

#### CHRISTIAN EDUCATION BOARD

Lebanon Bible & Book Store.....	\$25.00
---------------------------------	---------

#### SENIOR ADULT MINISTRIES BOARD

Lebanon Bible & Book Store.....	\$25.00
---------------------------------	---------

#### RETIREMENT & INSURANCE

Grant Ave. - Springfield.....	\$1.00
-------------------------------	--------

#### WORLD RELIEF

Victory - K.C.....	\$10.00
--------------------	---------

#### WORLD VISION

Victory - K.C.....	\$5.00
--------------------	--------

#### NATIONAL ASSOC. OF FWB

Calvary Fellowship - Fenton.....	\$ 52.00
South Central Mo. Assoc. of FWB (for 4 Special Days of Together Way Plan.....	3,000.00
<b>TOTAL.....</b>	<b>\$3,052.00</b>



## TIDBITS from Waynelle Scott

I noticed him when he entered the family restaurant at which we were dining one winter evening. He wore a shabby, heavy coat that looked several sizes too large for him. His unkempt hair straggled out below the tattered knit cap on his head. He walked slowly, seeming to savor the warmth of the friendly building. I carefully averted my eyes, not wanting to rudely stare. I was not the only one who took notice of this man. My husband and our pastor began quietly and compassionately to discuss what might be his plight in life. Where would he sleep on that cold, miserable night? Had he money enough to buy a meal or even a cup of coffee to warm his insides? Was there anyone who cared?

Somehow, we three seemed to feel the same compulsion to minister to this stranger. Our pastor pulled the price of a meal from his pocket and suggested we try to make this at least one evening when the man's stomach could be satisfied. My husband and I went to place the order. Unsure of exactly how to begin, I told the bright young man behind the counter that we had noticed this man who looked as if he could use a good meal, and that we would like to pay for it to be taken to him. The young man was agreeably surprised at our desire, and he insisted upon allowing a 50% discount on the meal. He told us that this man came into the restaurant occasionally and that he could not speak. However, he could read and write; this was how he communicated with them.

Suddenly, I was faced with a new challenge – one that made this venture into humanity a whole new thing. The young man at the counter assumed that I wanted to take the dinner out to the stranger. He offered me paper and a pen so that I could write him a note explaining what we were doing. Amazingly, it seemed the right thing to do. I could hardly wait to jot my note and take the food out to the man.

At first, he appeared bewildered as we sat the tray in front of him. He touched his throat and shook his head. I realized he was trying to tell us that he couldn't speak. I handed him my note to read. He smiled at me, took out his own pen, and quickly scribbled that he didn't need anything, thank you anyway. Not wanting to offend him but not willing to give up, I wrote again asking if I could box the food for him to take along for later. His eyes shone as he grinned and nodded his acceptance.

I haven't been able to get him off my mind. I have worried about where he went from there. Was there any place he could safely lay his head? Our little box of food wouldn't last long. What would he do for the next meal? I don't know the answers. I only know what my heart came to see – that love is not always made of fancy cards, flowers, and boxes of chocolates. Sometimes love is a kind word, a smile, a gentle pat on the arm, and every now and then, a box of fish and chips.

## Special Day for Harvey Hill

Sunday, January 29, 1995, the First Free Will Baptist Church in Winter Haven, Florida, held a special worship service. This service was to honor their Associate Pastor, Reverend Harvey Hill, upon his retirement from the church and his ministry as Associate Pastor. He has served the church over nineteen years.

The church gave thanks to the Lord for His blessings on Brother Hill and each Board Member. Members of the congregation gave personal testimonies about how the Lord had touched their lives through Brother Hill's ministry!

A "love offering" of \$746 was received for Brother and Sister Hill and the church presented them with \$300 in gift certificates. A luncheon was also given in their honor. Sister Sylvia Hill has been a very important part of Brother Harvey's ministry.

Brother Hill will remain Senior Citizen's Pastor and will still be preaching on a regular basis as the Lord sees fit to use him! Brother Hill is 82 and says he hopes to still be preaching when he is 90! God has been good to Brother Harvey Hill and we praise Him for His blessings.

Brother Hill was Florida's first state home missionary and also held the position of Executive Secretary for one year.

MISSOURI STATE ASSOC.  
OF FREE WILL BAPTISTS  
202 West Commercial  
Lebanon, MO 65536

FWB Bible College  
Library & Faculty  
3606 West End Ave.  
Nashville TN 37205

NON-PROFIT ORG.  
U.S. POSTAGE  
PAID  
INDEP. MO 64050  
PERMIT NO. 331

PLEASE INFORM US IMMEDIATELY OF YOUR NEW ADDRESS  
TO INSURE UNINTERRUPTED DELIVERY OF YOUR GEM