

**1990  
GEORGIA STATE ASSOCIATION  
OF  
FREE WILL BAPTISTS**

**FIFTY-FOURTH ANNUAL SESSION**

**MEETING AT THE  
NORMAN BAPTIST ASSEMBLY  
NORMAN PARK, GEORGIA  
NOVEMBER 15-17**

**EXECUTIVE OFFICE  
GEORGIA STATE ASSOCIATION  
OF  
FREE WILL BAPTISTS**

1990 MINUTES  
GEORGIA STATE ASSOCIATION  
OF  
FREE WILL BAPTISTS

PUBLISHED BY  
EXECUTIVE DEPARTMENT  
GOERGIA STATE ASSOCIATION  
OF  
FREE WILL BAPTISTS

OFFICERS, BOARD AND COMMITTEE MEMBERS

GENERAL OFFICERS

Rev. Billy Sharpston MODERATOR  
5310 Bloomfield Road, Macon, GA 31206  
912/781-1846, Georgia Union Association

Rev. Paul Smith ASSISTANT MODERATOR  
Route 3, Box 339, Hawkinsville GA 31036  
912/892-9474, Georgia Union Association

Mr. Howard Price CLERK  
Route 3, Box 81, Statesboro GA 30458  
912/587-5374, South Georgia Association

Rev. Terry Pierce ASSISTANT CLERK  
203 Poplar Street, Thomaston, GA 30286  
404/648-2055, Chattahoochee Association

Rev. Herbert Waid EXECUTIVE SECRETARY/TREASURER  
P.O. Box 1844, Moultrie, GA 31776  
912/985-5479, Union Association

Rev. Ronald Wallace EX-MODERATOR  
1686 Shallowford Road, Marietta, GA 30066  
404/926-8352, North Georgia Association

BOARD OF CAMP MT. BETHEL

Mr. Guyton Adams 1991  
PO Box 225, Berlin GA 31722  
912/324-2676, Union Association

Mr. J. Wallace Franks 1991  
Route 4, Box 2470, Tifton, GA 31794  
912/382-3580, Little River Association

Mr. Jack Lysaker 1991  
102 Prince Street, Dublin, GA 31021  
912/272-5663, Georgia Union Association

Mr. Benny McKinney 1991  
4405 Oakwood Road, Oakwood, GA 30566  
404/535-2331, North Georgia Association

Mr. Monroe T. Ray 1991  
P.O. Box 36, Ideal, GA 31041  
912/949-2851, Chattahoochee Association

Rev. John R. Amburgey 1993  
PO Box 266, Iron City, GA 31759  
912/774-2513, Martin Association

Rev. E. Dwight Fletcher 1993  
RR 1 Box 194-A, Bristol, GA 31518  
912/367-9798, South Georgia Association

Mr. Jerry E. Gresham 1993  
1004 Relswood Terrace, Albany, GA 31707  
912/435-6491, Midway Association

Mr. David Lix 1993  
3612 Grier Ave., Columbus, GA 31909  
404/569-0573, Twin Cities Association

Rev. Ricky Wilson 1993  
333 McMormic Rd, Martinez, GA 30907  
404/868-7927, Ogeechee Association

#### BOARD OF CHRISTIAN EDUCATION

Rev. Hubert Arnold 1991  
P.O. Box 912, Reynolds, GA 31076  
912/847-4627, Chattahoochee Association

Mr. William H. Cooper 1991  
Route 4, Box 2490, Tifton, GA 31794  
912/382-9868, Little River Association

Rev. Lamar Parrish 1991  
P.O. Box 69, Funston, GA 31753  
912/941-5504, Union Association

Rev. Robert Poole 1991  
11 Lake Court, Stockbridge, GA 30281  
404/473-1400, North Georgia Association

Rev. Paul Smith 1991  
Route 3, Box 339, Hawkinsville, GA 31036  
912/892-9474, Georgia Union Association

Mr. Mark Findley 1993  
Route 2, Box 318, Lyons, GA 30436  
912/578-3672, Ogeechee Association

Mr. Lynn Frazier 1983  
811 Rose Circle, Bainbridge, GA 31717  
912/246-4078, Martin Association

Rev. Bud Hill Route 2, Box 416, Lake Butler, FL 32054 904/496-3553, South Georgia Association	1993
Mr. William R. Lofton 2906 Greer Street, Albany, GA 31707 912/436-6986, Midway Association	1993
Rev. Willie C. Martin 5328 Hilliard Avenue, Columbus, GA 31904 404/322-6077, Twin Cities Association	1993
BOARD OF MISSIONS	
Mr. Malcom Freeman Route 1, Box 415, Jakin, GA 31761 912/372-4648, Midway Association	1991
Mr. Benny Lariscy Route 3, Box 727, Waycross, GA 31501 912/283-1670, South Georgia Association	1991
Rev. B. Frank McKinney 4733 Stephens Road, Gainesville, GA 30501 404/532-4671, North Georgia Association	1991
Rev. Roger Russell Route 5, Box 29, Colquitt, GA 31737 912/758-2559, Martin Association	1991
Rev. Chuck Scarborough Route 1, Box 60, Hartsfield, GA 31756 912/941-5276, Union Association	1991
Rev. John Beasley Route 3, Box 638, Aline Avenue, Metter, GA 30439 912/685-5619, Ogeechee Association	1993
Rev. James Earl Bryant Route 5, Box 19-1, Cochran, GA 31014 912/934-0004, Georgia Union Association	1993
Rev. Charles Clark 136 Carter Woods Drive, Warner Robins, GA 31093 912/953-3486, Chattahoochee Association	1993
Rev. C. Michael Edwards Route 1 Box 218-A, Norman Park, GA 31771 912/769-3828, Little River Association	1993

Rev. Russell Horne  
3918 Reese Road, Columbus, GA 31907  
404/563-3358, Twin Cities Association

1993

BOARD OF TRUSTEES

Mr. Kenneth Murphy  
Route 4, Box 121, Moultrie, GA 31768  
912/985-6157, Union Association

1991

Mr. Bobby Roberts  
404 Grow Street, Colquitt, GA 31737  
912/758-2333, Martin Association

1991

Mr. M. G. Shiver  
Route 2, Box 82, Leary, GA 31762  
912/734-5021, Midway Association

1991

Mr. Charles Snow  
1924 Glen Mora Court, Decatur, GA 30032  
404/288-2477, North Georgia Association

1991

Rev. Larry E. Williams  
PO Box 754, Jesup, GA 31545  
912/427-2101, South Georgia Association

1991

Rev. Charles E. Beasley  
Route 3, Box 636, Aline Avenue, Metter, GA 30439  
912/685-2009, Ogeechee Association

1993

Mr. C. M. Chafin, Jr.  
Route 1, Box 204, Norman Park, GA 31771  
912/769-3436, Little River Association

1993

Rev. David Dollar  
1731 43rd Street, Columbus, GA 31904  
404/323-8577, Twin Cities Association

1993

Mr. H. E. Dunaway  
Route 1, Box 77, Unadilla, GA 31091  
912/892-9388, Georgia Union Association

1993

Mr. Gleason Fowler  
Route 1, Box 321-A, Rupert, GA 31081  
912/862-3903, Chattahoochee Association

1993

## AUDITING COMMITTEE

Mrs. Marian James 1991  
3423 Lark Ridge, Waycross, GA 31501  
912/283-0983

Mrs. Virginia Grant 1991  
Route 4, Box 720, Donalsonville, GA 31745  
912/861-3875

Mrs. Bessie Bryant 1991  
Route 5, Box 19-1, Cochran, GA 31014  
912/934-0004

## RESOLUTIONS COMMITTEE

Rev. Willie C. Martin, Chairman 1991  
Route 4, Box 57, Alma, GA 31510  
912/632-5240

Rev. E. Dwight Fletcher 1991  
Route 1, Box 194-A, Briston, GA 31518  
912/367-9798

Mr. Gleason Fowler 1991  
Route 3, Box 319, Donalsonville, GA 31745  
912/324-8693

Mr. Lynn Frazier 1991  
816 6th Avenue NE, Eastman, GA 31023  
912/374-2533

Rev. Russell Horne 1991  
3918 Reese Road, Columbus, GA 31907  
404/563-3358

## CREDENTIALS COMMITTEE

Rev. Irvin Murphy 1991  
Route 2, Box 205, Lyons, GA 30436  
912/526-8207

Mrs. Dorothy Murphy 1991  
Route 2, Box 205, Lyons, GA 30436  
912/526-8207

Mrs. Latrelle Barksdale 1991  
Route 4, Box 2485, Tifton, GA 31794  
912/386-8320

GEORGIA STATE MASTER'S MEN

Mr. Horace Johnson  
P.O. Box 406, Albany, GA 31702  
912/436-7611

Senator

GEORGIA STATE WOMAN'S AUXILIARY

Mrs. Janice Wallace  
1686 Shallowford Road, Marietta, GA 30066  
404/926-8352

President

ALABAMA CHILDREN'S HOME TRUSTEE

Rev. Bill Barksdale  
Route 4, Box 2485, Tifton, GA 31794  
912/386-8320

1991

NATIONAL ASSOCIATION GENERAL BOARD MEMBER

Rev. Herbert Waid  
P.O. Box 1844, Moultrie, GA 31776  
912/985-5479

1992



## PROCEEDINGS OF THE ANNUAL MEETING

The fifty-fourth Annual Session of the Georgia State Association of Free Will Baptists convened at the Norman Baptist Assembly, Norman Park, Georgia, on November 15-17, 1990. The theme of the meeting was "The Christ Honoring Church", using Ephesians 3:14-21 as a Scripture text. Music was coordinated by Rev. James Ursrey, and provided by several different individuals and groups and song leaders. Mrs. Shirley Kimbrel served as pianist.

### THURSDAY EVENING

Presiding officer, Rev. Dwight Fletcher welcomed everyone to the meeting. Rev. C.B. Dowdney led the body in singing, "O How I Love Jesus." Opening prayer was offered by Rev. Dwight Fletcher. Pledges were made to both the American and Christian flags and also to the Bible.

The Session was called to order by Clerk Howard Price who introduced the Moderator, Rev. Billy Sharpston. Moderator Sharpston gave the official greeting to everyone present and recognized the following visitors: Evangelist, Rev. and Mrs. Bronco West; Rev. and Mrs. Tom Malone, president of the Free Will Baptist Bible College; Rev. Don Robirds, director of Communications of Foreign Missions; Rev. Melvin Worthington, National Executive Secretary; Rev. Bill Evans, Department of Retirement and Free Will Baptist Foundation; Mr. Jim Lauthren, Randall House Publications.

The Moderator called the roll of District Associations. All ten answered with delegates present. The Moderator appointed the Committee on Committees with the following to serve: Rev. C.B. Dowdney, Chairman; Rev. John Amburgey, Rev. Bill Barksdale, Rev. William Smith, and Rev. Gerald Brown.

Rev. Dowdney led the congregation in singing. The offertory prayer by Rev. Mark Barber led the congregation to worship through giving with an offering of \$195.51. Special music was presented by Mr. Todd Shelton. Rev. Dwight Fletcher introduced the keynote speaker, Rev. Tom Malone, President of the Free Will Baptist Bible College, who gave a challenging message on the topic of "The Nurturing Church, It's Responsibilities." Hymn of invitation "Have Thine Own Way" was sung.

Rev. Irvin Murphy, Chairman of the Credentials Committee gave a partial report with the following information: 10 districts, 12 churches with 100 voting delegates; 29 visitors registered with approximately 47 additional in the service for a grand total of 176 in attendance. The service was dismissed with prayer by Rev. Billy Sharpston.

## FRIDAY MORNING

The presiding officer, Rev. William Smith, called the morning session to order. Rev. Bud Hill, Music Director, led the congregation in singing "Higher Ground." Opening prayer was led by Rev. M. C. Powell. Special music was presented by the trio of Rev. Melvin Worthington, Rev. Russell and Mrs. Rachel Horne.

Rev. William Smith introduced the morning speaker, Rev. Gary Smith, who brought a message, "The Praying Church", based on the text from Ephesians 6:18 and Acts 4:23-31.

Moderator Sharpston called on Rev. Irvin Murphy for a partial report of the Credentials Committee which he gave as follows: 10 districts, 12 churches, with voting delegates of: 45 ministers, 15 deacons, 6 State Board Members, 21 district delegates, and 13 church delegates. There were two National representatives, 27 general visitors, 47 additional, for a total of 176.

The Moderator called for a report from the Committee on Committees. It was given by Chairman C.B. Dowdney as follows: Nominating Committee: Rev. James Ursrey, Chairman, Rev. Jerry Williams, Rev. James Sellers, Rev. Charles McNeese and Rev. Jackie Cabaniss; Resolutions Committee: Rev. Willie Martin, Chairman, Rev. Russell Horne, Mr. Gleason Fowler, Rev. Dwight Fletcher, Mr. Lynn Frazier.

The Moderator called for the report of the Executive Board. Clerk Howard Price gave this report (See report elsewhere). A motion carried to adopt this report. A motion carried to table Constitutional changes for the Master's Men and Woman's Auxiliary until the Saturday business session. A motion was carried to set an agenda for 2:20 Friday afternoon to hear the report from the Committee of Ten.

Rev. Ronald Wallace, Chairman of the Budget Committee presented the 1991 budget proposal. A motion carried to adopt the budget.

Executive Secretary, Herbert Waid, presented a report from the State Office with appropriate corrections for the printed Digest of Reports. A motion carried to receive the report. (See report elsewhere.) A motion carried to change wording on page 8, paragraph 4 in the Digest of Reports from "polled by mail" to "sent a letter".

Rev. Melvin Worthington, Executive Secretary of the National Association of Free Will Baptists, gave a report from the National Office. A motion carried to receive the report as information. Rev. Tom Malone, President of Free Will Baptist Bible College gave a report from the college. A motion carried to receive the report as information. Mr. Malcom Freeman presented the report from the State Mission Board. A motion carried to receive the report. There was discussion concerning Mission Board policy in sending missionaries to re-established failing churches.

The Morning Worship hour was opened by Rev. Len Blanchard. Mr. Todd Shelton led us in singing "Love Divine, All Love Excelling." Worship continued through giving. The offertory prayer was by Rev. Danny Ryals. An offering of \$165.60 was received.

Presiding Officer Rev. Len Blanchard presented Mrs. Barbara Dunbar who brought the special music of the morning. She sang "Only One Life." Rev. Blanchard presented the morning speaker, Rev. Galen Dunbar, who preached a message on "The Loving Church," from the text of I John 4:5-5:4 and I Peter 1:22. The congregation sang an invitational hymn, "Have Thine Own Way." Closing prayer was by Rev. Galen Dunbar.

#### FRIDAY AFTERNOON

Presiding Officer Rev. David Dollar called the afternoon session to order. Rev. Dwight Fletcher led the congregation in singing "Send A Great Revival". Rev. Willie Martin led in the opening prayer. Rev. Dollar presented Rev. Dwight Fletcher who sang "In The Midst Of It All" for the special music. Rev. Michael Edwards was presented to bring the afternoon devotional entitled "The Giving Church" using II Corinthians 9:6 and following and following verses.

The afternoon business session continued with a further discussion concerning the State Mission Board policy of sending missionaries to established churches. The Board will review this policy.

Rev. Don Robirds gave a report from the Foreign Missions Department. A motion carried to receive the report as information. Rev. Richard Adams gave a report from the National Home Mission Board. A Motion carried to receive this report as information

The Committee of Ten report concerning moving the State Office was presented by Chairman Grover Jewell. The report was received. A substitute motion for Item 3 was made stating that we launch a campaign to raise \$300,000 as quickly as possible, but allowing a reasonable time (2 or 3 years) to raise the money. In the event we do not or cannot raise the money in that reasonable time, we scrap the Macon idea and use whatever money we have for an alternative plan. Motion carried. Motion carried that any funds received be invested in a Free Will Baptist savings program at the discretion of the Executive Board.

A Motion carried that if we raise the money to purchase property (approximately \$40,000) within the first year that the Executive Board be directed to make the purchase for the State Association. A motion carried that we give the Committee of Ten a rising vote of appreciation for their conscientious, diligent labor in preparing the report regarding the possible relocation of the office of the



Georgia State Association of Free Will Baptists.

An updated report on registration by the Credentials Committee Chairman, Rev. Irvin Murphy was given. There were: district associations 10, churches 19, ministers 56, deacons 41, State Board members 8, Georgia missionaries 3, district association delegates 35, church delegates 23, National representatives 5, general visitors 39 with a total registered 210.

The Board of Camping report was given by Mr. Jack Lysaker. A motion was carried to receive the report. Rev. Bill Evans presented a report from the Board of Retirement and the Free Will Baptist Foundation. A motion carried to receive the report as information. Mr. Jim Lauthern from the Sunday School and Church Training Department reported. It was received as information. Mr. Kenneth Murphy presented a report from the Board of Trustees. A motion carried to receive the report. The meeting adjourned.

#### FRIDAY EVENING

The service opened with announcements and a moment of silent prayer in memory of Rev. Kenneth Faison and Rev. J.B. Mercer.

Rev. James Bryant, presiding officer, presented the song leader Rev. Len Blanchard who led the body in singing "I Love To Tell The Story." Special music was by Mr. and Mrs. Mark Findley who sang "My House Is Full." Mr. Benny Lariscy gave the offertory prayer. A missions offering of \$382.85 was received. The evening speaker was Rev. Richard Adams from the National Home Missions Department. His topic was "The Growing Church" based on a text from II Timothy 4:1-4. Services closed with a good response at the altar.

#### SATURDAY MORNING

Presiding officer, Rev. Dwight Fletcher, opened the session by leading the congregation in singing "Amazing Grace". Opening prayer was by Mr. William Cooper. Special music was by Rev. Rudy Woods who sang "The Longer I Serve Him The Sweeter He Grows." Rev. Dwight Fletcher introduced the morning speaker, Rev. Charles Beasley, whose message was "The Obeying Church" from a text found in Acts 4:29.

Moderator Sharpston appointed a committee to evaluate the financial structure of our state budget: Rev. Ronald Wallace, chairman, Rev. James Ursrey, Rev. Len Blanchard, Mr. Curtis Gay, Mr. Lamar Brooks, Mr. Daniel Dinkins and Mr. Grover Jewell.

Rev. Levy Corey gave the report from the Alabama Children's Home. A motion carried to receive the report as information. Rev. Willie Martin presented the report from the Board of Christian Education. A motion carried to

receive the report. Mrs. Janice Wallace gave the report from the State Woman's Auxiliary. Motion carried to receive the report as information.

Miss Debbie Griffin, missionary to Japan brought words of greeting and appreciation to the body.

A motion carried to remove from the table the motion to include the State Master's Men and the State Woman's Auxiliary in the State Constitution. Motion carried to adopt these changes as noted below by a two-thirds majority:

"There shall be a Georgia State Master's Men. They shall select their own officers and conduct their own business."

"There shall be a Georgia State Woman's Auxiliary Convention. They shall elect their officers, conduct their business and maintain their treasury."

Rev. Len Blanchard gave the report from the Georgia State Double In A Decade Committee. A motion carried to receive the report.

Assistant Moderator Rev. Paul Smith read the Resolutions and they were adopted by motion. (See Resolutions elsewhere.)

Rev. Irvin Murphy gave the final report of the Credentials Committee. A motion was carried to receive the report as follows: district associations 10, churches 19, ministers 56, deacons 41, State Board members 8, Georgia missionaries 3, district delegates 35, church delegates 24, visitors 51, National representatives 5 making a total of 223.

A report from the Auditing Committee was given by Mrs. Marion James. A motion carried to receive the report.

Mr. Chuck Snow gave a brief report on his and Fleda's visit to the Soviet Union. He told of new religious freedom allowing them to distribute Bibles in the Soviet Republic of Georgia.

A motion was carried to elect the following as delegates to the National Association in 1991 in Charleston, West Virginia: Mrs. Janice Wallace, Mrs. Mary Lee Fowler, Mrs. Bonnie Williams, Mrs. Faye Bryant, and Mr. Todd Shelton; alternates were: Mrs. Belyn Pierce, Mrs. Shirley Sharpston, Mrs. Edith Shiver, Mrs. Lynda Blanchard, Mrs. Donna Jewell.

Rev. James Ursrey, Chairman of the Nominating Committee, gave their report. A motion carried to receive this report and vote on it item by item. There were no other nominations and all nominees were elected as shown elsewhere in these minutes.

Moderator Sharpston made closing remarks of appreciation for a good State Session. Motion was made to give a rising vote of thanks to Rev. and Mrs. Waid and the Hospitality Committee.

Motion carried to adjourn. Session closed in prayer by Rev. Paul Smith.

Respectively submitted

Mr. Howard Price, Clerk

## EXECUTIVE BOARD REPORT

The Executive Board is Constitutionally charged with the responsibility of acting for the Georgia State Association when it is not in session, and then reporting to the State Association in session for approval of its actions. The decisions made by the Executive Board are made with prayerful consideration and an acute awareness of our responsibility and accountability. The following items are presented for your approval at this Fifty-fourth Annual Session.

### 1990 STATE PROGRAM

The Program Theme for the 1990 session of our State Association is "The Christ Honoring Church" taken from Ephesians 3:14-21.

### GEORGIA STATE BUDGET PROPOSED

A 1991 Calendar Year \$500,000 Budget is proposed, 50% for National Ministries and 50% for Georgia State Ministries. Please find this Budget detailed elsewhere in this Digest of Reports.

### LAURA BELLE BARNARD DAY:

Our sixth annual Laura Belle Barnard Day was observed on October 14, 1990. Half of the receipts will be used by our State Mission Board for a Georgia State mission project. Half will be designated to the account of one or more Georgians serving overseas with our Foreign Missions Department. The State Executive Board makes this allocation in consultation with Foreign Missions Office administrative personnel.

### DOUBLE IN A DECADE

To complement the National Association's action, taken in July 1990, to promote a ten year church/church membership growth endeavor, the Executive Board established a Georgia State Committee with the same goals. The Georgia Committee is: Rev. Len Blanchard, Chairman; Rev. Chuck Scarborough; Rev. Paul Smith and Rev. Glenn Thomas.

## COMMITTEE OF TEN

The Committee of Ten has served us well. Their written report is included in this Digest of Reports. The Committee of Ten will present their report for your consideration and discussion during our Friday Afternoon Business Session.

## PROPOSED CONSTITUTIONAL AMENDMENTS

FIRST: The Constitution of the Georgia State Association of Free Will Baptists, Article III, Section 8, shall read:

There shall be a Georgia State Woman's Auxiliary Convention. They shall elect their officers, conduct their business and maintain their treasury.

SECOND: The Constitution of the Georgia State Association of Free Will Baptists, Article III, Section 9, shall read:

There shall be a Georgia State Master's Men. They shall elect their officers and conduct their business.

## NEW OFFICIAL HOURS SET FOR STATE OFFICE

1. Office hours of 8:00 a.m. to 5:00 p.m. will be observed.
2. The State Office will be closed Mondays.

## OFFICE PERSONNEL SALARY/BENEFITS ADJUSTED

1. The Executive Secretary/Treasurer is to receive \$.26 per mile when driving for the State Association.
2. His automobile insurance is to be paid by the State Association.
3. The Office Secretary/Bookkeeper is to receive a 5% cost of living salary increase.

## STATE OFFICERS RESIGNED

Rev. Marty McWilliams, Assistant Clerk took a church that is not in the Georgia State Association and therefore resigned. He was replaced by Rev. Terry Pierce. Just prior to his death, Rev. Kenneth Faison, Assistant Moderator, resigned. Rev. Paul Smith took his responsibilities.



## STATE ASSOCIATION SPONSORED SPECIAL EVENTS for 1991

- \* The State Minister's Retreat with Rev. Harrold Harrison, April 8-10.
- \* The State Youth Conference, May 10-11.
- \* Summer Camp Sessions.
- \* Couples Retreat with Dr. Don Hill, Christian professional marriage counselor, September 20-21.
- \* Laura Belle Barnard Day, October 13.
- \* State Woman's Auxiliary Convention, November 13-14.
- \* State Association Bible Conference, November 14.
- \* State Association Session, November 14-16.

## EXECUTIVE BOARD MEETINGS

Since our last State Association Session, the Executive Board has met to conduct State business the following times:

November 18, 1989, at close of State Association Session  
February 10, 1990, All Boards Meeting, Macon  
May 12, 1990, Regular Meeting, Macon  
June 16, 1990, Called Meeting, Macon  
August 11, 1990, Regular Meeting, Macon  
November 14, 1990, Regular Meeting, Norman Park

Respectfully submitted

Howard Price, Clerk

# GEORGIA STATE BUDGET FOR 1991

PROJECTED INCOME - \$500,000

## GEORGIA STATE MINISTRIES

STATE OFFICE	13.25%	\$ 66,250
PROMOTIONAL MATERIALS	4.00%	\$ 20,000
EXECUTIVE BOARD	.75%	\$ 3,750
MISSIONS	19.40%	\$ 97,000
CAMP MT. BETHEL	8.70%	\$ 43,500
CHRISTIAN EDUCATION	1.50%	\$ 7,500
TRUSTEES	2.00%	\$ 10,000
ALABAMA CHILDREN'S HOME	.40%	\$ 2,000
TOTAL	50.00%	\$250,000

## NATIONAL MINISTRIES

EXECUTIVE DEPARTMENT/COOPERATIVE FUND	1.40%	\$ 7,000
FOREIGN MISSIONS:		
General & Miscellaneous Funds	5.60%	\$ 28,000
Bishops	3.20%	\$ 16,000
Creechs	3.20%	\$ 16,000
Crowsons	3.20%	\$ 16,000
Griffin	3.20%	\$ 16,000
FREE WILL BAPTIST BIBLE COLLEGE:		
Together We Can	15.00%	\$ 75,000
HOME MISSIONS:		
General & Miscellaneous Funds	5.60%	\$ 28,000
Burns	3.20%	\$ 16,000
Lynns	3.20%	\$ 16,000
MASTER'S MEN	1.00%	\$ 5,000
RADIO & TV	1.00%	\$ 5,000
RETIREMENT & INSURANCE	1.00%	\$ 5,000
FREE WILL BAPTIST FOUNDATION	.15%	\$ 750
THEOLOGICAL INTERGRITY COMMISSION	.05%	\$ 250
TOTAL	50.00%	\$250.000
GRAND TOTAL	100.00%	\$500,000

**LAURA BELLE BARNARD  
DAY OFFERINGS - 1990**

Chattahoochee Assn 570.64

Littel Bethel 50.00  
Thomaston 1st 323.02  
Trinity 100.00  
Turners Chapel 35.00  
District Assn 62.62

Georgia Unions Assn 927.90

Crossroads 32.00  
Double Branch 178.20  
Dublin 1st 137.70  
Eastman 1st 69.00  
Mt Ararat 189.00  
Pleasant Hill 100.00  
White Oaks 172.00  
Wilson Chapel 50.00

Little River Assn 438.75

Friendship 48.00  
Hahira 1st 41.75  
Homerville 239.00  
Ozias 110.00

Martin Assn 150.00

Corinth 100.00  
Mt Gilead 50.00

Midway Assn 2,516.45

Albany 1st 231.00  
Bainbridge 25.00  
Bellview 1,016.10  
Berean 10.00  
Blakely 1st 100.00  
Cedar Springs 600.00  
New Light 498.10  
White Plains 36.25

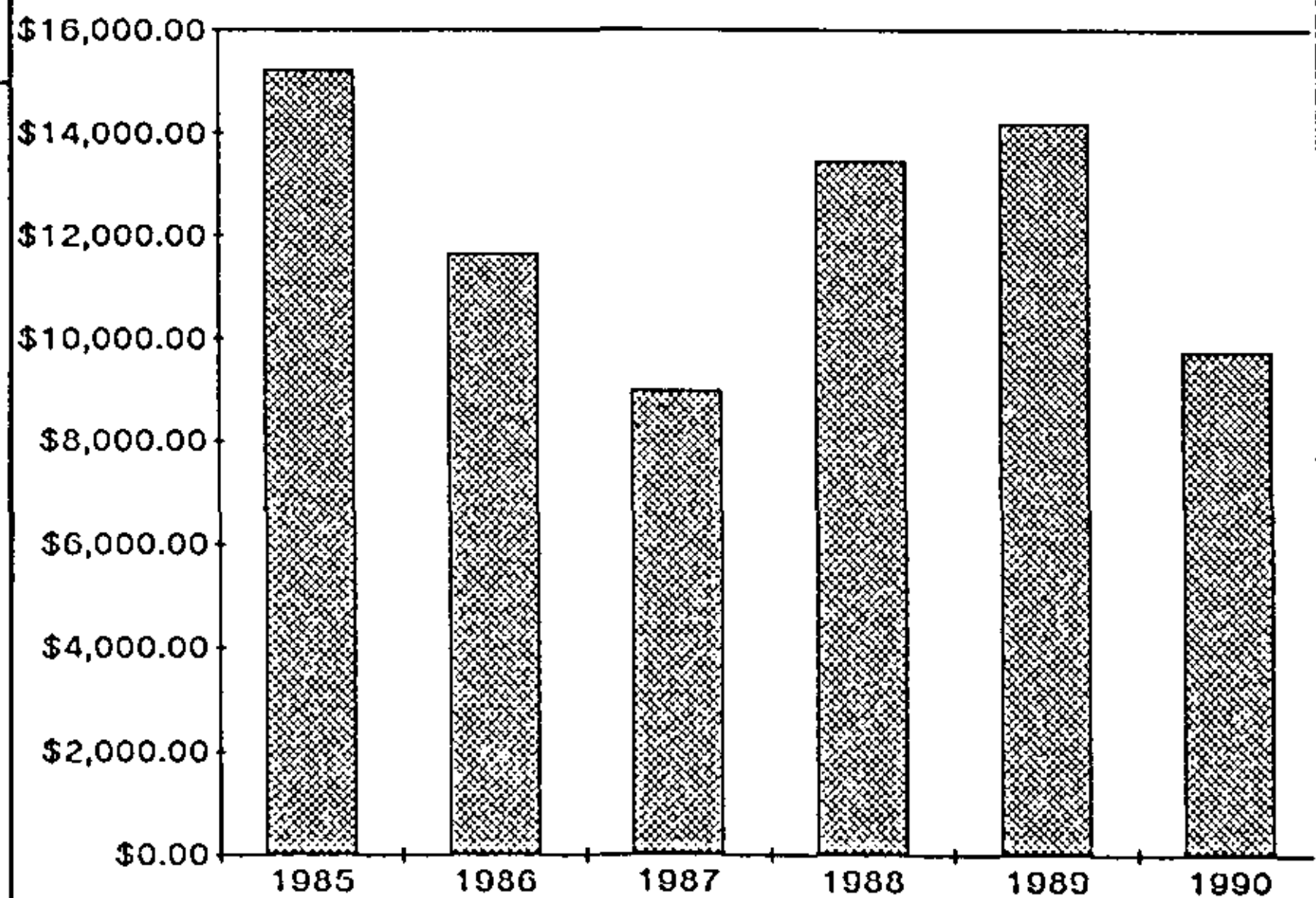
North Georgia Assn 320.00

Shallowford 320.00

Ogeechee Assn 200.00

Augusta 200.00

**LAURA BELLE BARNARD DAY RECEIPTS**  
Six Year Comparison



South Georgia Assn 2,725.82

Bethany 100.00  
Brunswick 1st 70.00  
Glennville 473.00  
Jesup 1st 150.00  
Liberty 117.20  
New Hope 251.00  
Pine Level 86.00  
Piney Grove 94.00  
Statesboro 1,300.00  
Surrency 30.00  
Swainsboro 54.62

Twin Cities Assn 757.64

Calvary 746.64  
Columbus 1st 11.00

Union Assn 1,058.82

Bay 100.00  
Fellowship 258.82  
Greenwood 130.00  
Midway 570.00

Miscellaneous 100.00

C F Martins 50.00  
Individual 50.00

Grand Total 9,766.02

Laura Belle Barnard Day monies are designated for our Georgia Missionaries. This year the State Mission Board will use their 50% (4,883.01) for the North Fayette Church Building Fund. The Foreign Mission 50% will be divided: 80% for Allan and LaRue Crowson in France and 20% for Paul and Rhoda Creech in Ivory Coast, Africa.

Commendation is due the Statesboro Church for the single largest contribution to our special Georgia Mission Day! And thanks to each of you who gave a little extra just because you love our Georgia missionaries and wanted to prove it by giving again.

The chart above gives a good overview of offerings since the Laura Belle Barnard Mission Day was begun in 1985.

## EXECUTIVE SECRETARY/TREASURER REPORT

Many changes have happened during these short nine years that we have been in the State Office. We have computerized the bookkeeping and finance reporting system. The computer has also enhanced the lay-out and addressing of the Promotional Bulletin.

The eight year old State Budget has proven to be an unqualified blessing. Never in our history have our people so generously supported our ministries beyond the local church. In 1982-1983 our churches gave \$282,257.66 to State and National ministries. Last year (1989) \$438,667.24 was given. This is a 64% improvement in overall giving. The State Mission Board's income has increased over two and one half times--from \$22,036.87 to \$56,705.90. The Camp Mt. Bethel and the Christian Education Boards' (they were together back then) combined receipts have leaped from \$1,777.67 to \$19,447.11. This is an eleven fold increase.

The State Treasurer now serves as the treasurer for all State funds. The boards profit by having, at any given time, a "to date" computer generated report of their board's financial status. When National, district association and the Alabama Children's Home ministries receive funds from the State Office, they also receive a computer generated report showing the source of the offerings (district association, church, treasurer's name and address and amount of offering). The State Auditors are pleased to be able to audit a uniform computerized bookkeeping system with properly organized supporting evidence and statements.

The location of our first State Office was in Tifton where Rev. E.C. Morris operated it out of his home. In 1961 Rev. Mance Cason was chosen to be the next Promotional Secretary and the office was relocated in Moultrie and has remained there until the present time.

The State pastors were sent a letter in 1989 to see if they would favor relocating the State Office in the Macon area. In all, 72 responded: 63 affirmatively (87.5%) and 9 negatively (12.5%). Seven out of eight were favorably inclined to move the State Office. In November 1989 the State Association in session voted to move the State Office to the Macon area.

The State Association, thereafter, made provision for a Committee of Ten laymen to investigate and make recommendation back to the State Association in their 1990 session. They are to suggest a location in the Macon area, a State Office building and a method of funding the project.

Within their written report is a paper entitled, WHAT IS THE PER CAPITA COST OF BUILDING A PROPER STATE OFFICE? The idea for this study came from the Chairman of the Committee of Ten and was discussed at some length in the meetings. The Committee of Ten asked the State Executive Secretary/Treasurer to compose this part of the report.

The Committee of Ten had to work with two different cost schemes. The first was a one time cost of building a proper State Office building and the other was an ongoing cost of a housing allotment for the Executive Secretary/Treasurer. They diligently investigated both and reported the Office Building costs in their report. The Georgia State Constitution mandates the State Executive Board to set the Executive Secretary/Treasurer's salary and benefits. The Committee of Ten estimates the monthly cost for the Executive Secretary/Treasurer to live in Macon would be about \$1,200.00.

Many worked to make the Georgia State ministries successful: State board and committee members, camp workers, conference and retreat workers, the Committee of Ten and the State Office Secretary/Bookkeeper and Promotional Bulletin Editor/Circulation Manager. The ones who paid the bills to make the ministries possible were our COOPorative giving churches. The Georgia State ministries are almost 100% funded by our COOPorative giving churches. A sincere "thank you" is due to the many "unsung heros" who love the Lord enough to care.

Respectfully submitted

Herbert Waid  
Executive Secretary/Treasurer

STATE OFFICE FINANCIAL REPORT  
Statement of Cash Receipts and Disbursements  
for the year ended December 31, 1989

Balance January 1, 1989			\$ 13,022.50
RECEIPTS:			
Cooperative Giving	\$123,039.71		
Designated Giving	215,640.83		
Transfer from Savings	<u>13,865.73</u>	<u>352,546.27</u>	
TOTAL ACCOUNTABLE			<u>\$365,568.77</u>
DISBURSEMENTS:			
NATIONAL MINISTRIES:			
National Cooperative Fund	\$14,950.00		
Foreign Missions	69,884.22		
Home Missions	13,467.60		
Bible College	<u>9,240.74</u>	107,542.56	
STATE MINISTRIES:			
Board of Missions	\$105,680.59		
Board of Camping	37,744.90		
Board of Christian Education	8,910.51		
Board of Trustees	4,660.03		
FWB Children's Home, Alabama	<u>10,330.08</u>	167,326.19	
PROMOTIONAL MATERIAL:		12,698.71	
EXECUTIVE BOARD:		2,544.72	
STATE OFFICE:		48,391.56	
MISCELLANEOUS MINISTRIES		<u>14,238.12</u>	<u>352,741.78</u>
Balance on hand December 31, 1989			<u>\$ 12,826.99</u>



STATE OFFICE ACCOUNT  
for the year ended December 31, 1989

Balance on hand January 1, 1989	\$ 1,538.86
---------------------------------	-------------

RECEIPTS:

Cooperative and Designated Giving	\$34,751.98	
Transferred for Equipment	2,118.80	
Interest from Savings	3,115.73	
State Association Room & Meals	<u>7,886.50</u>	<u>47,873.01</u>
		<u>\$49,411.87</u>

DISBURSEMENTS:

Telephone	\$ 1,152.88	
Utilities	1,363.87	
Executive Secretary: Salary	19,200.00	
FICA	828.00	
Retirement	520.00	
Insurance	2,576.25	
Mileage	4,348.61	
Nat'l Assn Exp	582.64	
Bonus	500.00	
Leadership Conf	169.96	
Secretary: Salary	6,485.00	
Retirement	320.00	
Bonus	100.00	
Office Equipment	2,348.75	
Corporation Fee	186.69	
State Association Expense	<u>7,708.91</u>	<u>48,391.56</u>

Balance on hand December 31, 1989	<u>\$ 1,020.31</u>
-----------------------------------	--------------------

PROMOTIONAL MATERIALS  
for the year ended December 31, 1989

Balance on hand January 1, 1989 \$ 758.44

RECEIPTS:

Cooperative Giving	\$ 9,222.88	
Printing & Postage	495.15	
Transfer from Savings	750.00	
State Association Offering	277.00	
National Representation Fees	1,210.00	
State Representation Fees	585.00	
Local Representation Fees	164.10	<u>12,704.13</u>

Total Accountable \$13,462.57

DISBURSEMENTS:

Promotional Bulletin	4,743.62	
Postage	3,215.86	
Office Supplies	1,309.49	
National Representation Fees	1,210.00	
State Association Programs	241.49	
1989 Digest	629.22	
State Minutes, 1988	1,276.52	<u>12,626.20</u>

Balance on hand December 31, 1989 \$ 836.37

EXECUTIVE BOARD ACCOUNT

for the year ended December 31, 1989

Balance on hand January 1, 1989 \$ 366.82

RECEIPTS:

Cooperative Giving		<u>3,045.19</u>
--------------------	--	-----------------

Total Accountable \$3,412.01

DISBURSEMENTS:

Mileage	2,051.70	
Leadership Conference Expense	243.02	
Honorarium	250.00	<u>2,544.72</u>

Balance on hand December 31, 1989 \$ 867.29



ANNUAL BUDGET REPORT FOR  
January 1 - December 31, 1989

	Voted Budget Percent	Voted Budget \$	Received \$	% of Budget Received	% of Total Given	Over/ (Under) Budget	Budget Exceeded Month
GEORGIA STATE:							
State Office	13.60%	\$60,000.00	\$34,751.98	57.90%	7.90%	(\$25,248.02)	
Promotional Materials	3.64%	\$16,000.00	\$9,222.88	57.60%	2.10%	(\$6,777.12)	
Executive Board	1.20%	\$5,300.00	\$3,045.19	57.50%	0.70%	(\$2,254.81)	
Missions	22.04%	\$97,000.00	\$56,705.90	58.50%	12.90%	(\$40,294.10)	
Camp Mt. Bethel	6.82%	\$30,000.00	\$17,608.86	58.70%	4.00%	(\$12,391.14)	
Christian Education	0.73%	\$3,200.00	\$1,838.25	57.40%	0.40%	(\$1,361.75)	
Trustees	1.66%	\$7,300.00	\$4,203.55	57.60%	1.00%	(\$3,096.45)	
Children's Home*	0.27%	\$1,200.00	\$22,692.06	1891.00%	5.20%	\$21,492.33	Jan
Totals	50.00%	\$220,000.00	\$150,068.67	68.20%	34.20%	(\$69,931.06)	

\*Reported their direct receipts for only 7 months (7/12 = 58%)

NATIONAL:

Exec Office & COOP	1.40%	\$6,160.00	\$8,006.51	130.00%	1.80%	\$1,846.51	Oct
FOREIGN MISSIONS:							
Gen Fund/Misc Accts	6.70%	\$29,480.00	\$60,321.47	204.60%	13.80%	\$30,841.47	Jun
Bishops Account	4.00%	\$17,600.00	\$34,123.74	193.90%	7.80%	\$16,523.74	Jun
Crowsons Account	4.00%	\$17,600.00	\$40,949.28	232.70%	9.30%	\$23,349.28	Apr
Griffin Account	4.00%	\$17,600.00	\$29,347.31	166.70%	6.70%	\$11,747.31	Aug
F.W.B. Bible College	16.00%	\$70,400.00	\$54,596.82	77.60%	12.40%	(\$15,803.18)	
HOME MISSIONS:							
Gen Fund/Misc Accts	6.70%	\$29,480.00	\$42,632.28	144.60%	9.70%	\$13,152.28	Aug
Burns Account	4.00%	\$17,600.00	\$16,954.28	96.30%	3.90%	(\$645.72)	
Master's Men	1.00%	\$4,400.00	\$645.58	14.70%	0.10%	(\$3,754.42)	
Radio & TV	1.00%	\$4,400.00	\$46.44	1.10%	0.00%	(\$4,353.56)	
Retirement/Insurance	0.96%	\$4,224.00	\$649.90	15.90%	0.10%	(\$3,574.10)	
Foundation	0.16%	\$704.00	\$278.52	39.60%	0.10%	(\$425.48)	
Theo Integrity Comm	0.08%	\$352.00	\$46.44	13.20%	0.00%	(\$305.56)	
Total	50.00%	\$220,000.00	\$288,598.57	131.90%	65.80%	\$68,598.57	Sep
Grand Totals	100%	\$440,000.00	\$438,667.24	99.70%	100%	(\$1,332.76)	

COOPERATIVE, DESIGNATED GIFTS, January 1 - December 31, 1989

	COOPERATIVE GIVING	DESIGNATED GIVING	TOTALS
CHATTAHOOCHEE ASSOCIATION:			
Little Bethel	\$ 1,601.00	\$ 396.00	\$ 1,997.00
Mt. Olive	763.00	687.12	1,450.12
New Prospect	-0-	160.00	160.00
Spring Hill	40.00	271.20	311.20
Thomaston, First	2,300.00	1,234.77	3,534.77
Trinity	938.40	185.00	1,123.40
Turner's Chapel	1,316.86	611.90	1,928.76
District Association	-0-	343.50	343.50
TOTALS	\$ 6,959.26	\$ 3,889.49	\$10,848.75

GEORGIA UNION ASSOCIATION:

Bay Springs	\$ 240.00	\$ 60.00	\$ 300.00
Bethlehem	-0-	52.60	52.60
Christian Hill	509.19	56.56	565.75
Crossroads	972.80	101.00	1,073.80
Double Branch	4,796.88	1,559.25	6,356.13
Dublin, First	1,013.77	508.45	1,522.22
Eastman, First	275.00	823.74	1,098.74
Little Bethel	350.00	100.00	450.00
Mt. Ararat	416.70	891.75	1,308.45
New Hope	-0-	50.00	50.00
Pine Level	490.00	45.00	535.00
Pleasant Hill	2,389.00	997.31	3,386.31
Warner Robins	-0-	200.00	200.00
White Oaks	2,770.79	5,059.81	7,830.60
Wilson Chapel	1,085.02	290.00	1,375.02
Mission Board	-0-	15.00	15.00
District Assn	63.00	1,001.55	1,061.55
TOTALS	\$15,372.15	\$11,812.02	\$27,184.17

LITTLE RIVER ASSOCIATION:

Cool Springs	\$ 400.00	\$ 1,333.25	\$ 1,733.25
Corinth	1,642.78	785.42	2,428.20
Forest Hill	-0-	85.00	85.00
Friendship	75.00	43.00	118.00
Hahira, First	275.00	150.00	425.00
Homerville	2,200.00	556.67	2,756.67
Ozias	-0-	528.00	528.00
Pine Level	1,895.64	558.40	2,454.04
Sunnyside	240.00	720.00	960.00
Tifton, First	-0-	575.00	575.00
Valdosta, First	50.00	75.00	125.00
White Hall	-0-	218.59	218.59
Zion Hill	-0-	900.00	900.00
Minister/Deacon Fellowship	-0-	9.20	9.20
Mission Board	-0-	400.00	400.00
District Association	248.46	240.00	488.46
TOTALS	\$ 7,026.88	\$ 7,177.53	\$14,204.41

# MARTIN ASSOCIATION:

Colquitt	\$ 300.00	\$ 1,600.00	\$ 1,900.00
Corinth	2,726.66	810.00	3,536.66
Donalsonville, First	-0-	708.00	708.00
Highway	131.45	-0-	131.45
Mothers Home	283.50	-0-	283.50
Mt. Gilead	550.00	1,632.00	2,182.00
Mt. Glory	-0-	1,825.00	1,825.00
New Home Miller County	2,217.35	30.00	2,247.35
New Salem	3,396.96	1,779.63	5,176.59
Thompson	1,500.00	2,149.70	3,649.70
District Association	380.35	155.00	535.35
TOTALS	\$11,486.27	\$10,689.33	\$22,175.60

# MIDWAY ASSOCIATION:

Albany, First	\$ 9,727.00	\$14,284.54	\$24,011.54
Bainbridge, First	90.00	277.00	367.00
Bellview	5,024.65	10,624.84	15,649.49
Berean	300.00	1,863.91	2,163.91
Blakely, First	1,492.13	2,737.66	4,229.79
Cedar Springs	5,629.43	4,685.00	10,314.43
Damascus	-0-	50.00	50.00
Enterprise	150.00	153.00	303.00
Hammock Springs	800.00	-0-	800.00
Macedonia	900.00	487.00	1,387.00
New Enterprise	100.00	-0-	100.00
New Light	3,317.21	1,712.00	5,029.21
Patmos	2,952.00	1,197.60	4,149.60
Traveler's Rest	100.00	-0-	100.00
White Plains	-0-	84.00	84.00
District Association	-0-	868.00	868.00
TOTALS	\$30,582.42	\$39,024.55	\$69,606.97

# NORTH GEORGIA ASSOCIATION;

Decatur	\$ 120.00	\$ 3,220.00	\$ 3,340.00
Liberty	70.00	690.00	760.00
North Fayette	470.00	-0-	470.00
Shallowford	1,100.00	2,518.97	3,618.97
District Association	-0-	65.00	65.00
TOTALS	\$ 1,760.00	\$ 6,493.97	\$ 8,253.97

# OGEECHEE ASSOCIATION:

Augusta	\$ 1,793.00	\$ 2,250.00	\$ 4,043.00
Deep Creek	180.00	675.73	855.73
Friendship	-0-	721.75	721.75
Lower Corinth	240.00	-0-	240.00
Lyons	825.00	142.66	967.66
Marietta	600.00	1,080.00	1,680.00
Metter	-0-	388.14	388.14
Peace	-0-	1,100.00	1,100.00
Mission Board	-0-	940.68	940.68
District Association	10.00	135.00	145.00
TOTALS	\$ 3,648.00	\$ 7,433.96	\$11,081.96

SOUTH GEORGIA ASSOCIATION:

Alabaha	\$ 1,098.06	\$ 10.00	\$ 1,108.06
Baxley	195.00	1,783.00	1,978.00
Bethany	-0-	100.00	100.00
Brunswick, First	300.00	1,175.00	1,475.00
Corinth	79.81	626.07	705.88
Ebenezer	1,200.00	5,281.35	6,481.35
Glennville	300.00	7,075.46	7,375.46
Harmony	833.21	4,417.00	5,250.21
Jesup, First	7,036.00	4,502.00	11,538.00
Liberty	-0-	1,227.12	1,227.12
Memorial	1,153.77	1,200.00	2,353.77
New Hope	240.00	1,320.00	1,560.00
Oak Hill	-0-	130.00	130.00
Philadelphia	655.00	6,054.66	6,709.66
Pine Level	-0-	4,409.24	4,409.24
Piney Grove	-0-	1,522.75	1,522.75
Satilla	1,000.00	2,293.00	3,293.00
Savannah, First	600.00	700.50	1,300.50
Spring Grove	757.00	2,384.00	3,081.00
Statesboro	2,164.60	1,170.00	3,334.60
Surrency	-0-	1,096.00	1,096.00
Swainsboro	-0-	547.15	547.15
Mission Board	-0-	190.00	190.00
District Assn	-0-	365.00	365.00
TOTALS	\$17,552.45	\$49,629.30	\$67,181.75

TWIN CITIES ASSOCIATION:

Calvary	\$ 6,270.63	\$ 622.14	\$ 6,892.77
Columbus 1st	3,605.00	129.68	3,734.68
White Rock	4,766.33	151.00	4,917.33
District Association	-0-	80.00	80.00
TOTALS	\$14,641.96	\$ 982.82	\$15,624.78

UNION ASSOCIATION:

Bay	\$ 1,275.00	\$ 1,049.20	\$ 2,324.20
Cairo, First	775.00	105.00	880.00
Fellowship	2,160.31	3,817.46	5,977.77
Grace	-0-	2,215.13	2,215.13
Greenwood	-0-	325.00	325.00
Midway	5,290.19	3,768.43	9,058.62
New Hope	1,423.66	-0-	1,423.66
Poulan	-0-	650.00	650.00
Spring Hill	1,484.16	620.84	2,105.00
Mission Board	-0-	1,216.48	1,216.48
District Association	177.00	665.00	842.00
TOTALS	\$12,585.32	\$16,157.96	\$28,743.28

MISCELLANEOUS:

Individuals	\$ 1,325.00	\$ 2,562.71	\$ 3,887.71
Churches	-0-	125.00	125.00
Northside Church Bond	-0-	1,060.00	1,060.00
Transfer from Savings	-0-	1,728.80	1,728.80
State Association	-0-	8,963.10	8,963.10
Camp Canteen	-0-	3,227.07	3,227.07
Camp Registration	-0-	13,860.00	13,860.00
Youth Conference	-0-	2,903.00	2,903.00
Retreats	-0-	1,752.25	1,752.25
Christian Book Store	-0-	100.00	100.00
Hyman Evangelistic Assn	100.00	-0-	100.00
GA State Woman's Auxiliary	-0-	1,898.45	1,898.45
WNAC	-0-	110.00	110.00
GA State Master's Men	-0-	58.00	58.00
Miscellaneous: Insurance			
Refund, Printing, etc.	-0-	750.78	750.78
TOTALS	\$ 1,425.00	\$39,099.16	\$40,524.16
GRAND TOTALS	\$123,039.71	\$192,390.09	\$315,429.80

CHURCHES THAT GAVE \$1,000 IN 1989  
THROUGH GEORGIA STATE COOPERATIVE GIVING

1.	Albany, First, Midway	\$9,727.00
2.	Jesup, First, South Georgia	7,036.00
3.	Calvary, Twin Cities	6,270.63
4.	Cedar Springs, Midway	5,629.43
5.	Midway, Union	5,290.19
6.	Bellview, Midway	5,024.65
7.	Double Branch, Georgia Union	4,796.88
8.	White Rock, Twin Cities	4,766.33
9.	Columbus, First, Twin Cities	3,605.00
10.	New Salem, Martin	3,396.96
11.	New Light, Midway	3,317.21
12.	Patmos, Midway	2,952.00
13.	White Oaks, Georgia Union	2,770.79
14.	Corinth, Martin	2,726.66
15.	Pleasant Hill, Georgia Union	2,389.00
16.	Thomaston, First, Chattahoochee	2,300.00
17.	New Home Miller County, Martin	2,217.35
18.	Homerville, Little River	2,200.00
19.	Statesboro, South Georgia	2,164.00
20.	Fellowship, Union	2,160.31
21.	Pine Level, Little River	1,895.64
22.	Augusta, Ogeechee	1,793.00
23.	Corinth, Little River	1,642.78
24.	Little Bethel, Chattahoochee	1,601.00
25.	Thompson, Martin	1,500.00
26.	Blakely, First, Midway	1,492.13
27.	Spring Hill, Union	1,484.16
28.	New Hope, Union	1,423.66
29.	Turners Chapel, Chattahoochee	1,316.86
30.	Bay, Union	1,275.00
31.	Ebenezer, South Georgia	1,200.00
32.	Memorial, South Georgia	1,153.77
33.	Shallowford, North Georgia	1,100.00
34.	Alabaha, South Georgia	1,098.06
35.	Wilson Chapel, Georgia Union	1,085.02
36.	Dublin, First, Georgia Union	1,013.77
37.	Satilla, South Georgia	1,000.00

Individual Giving \$1,000:

Rev. and Mrs. Riley Giddens	1,100.00
-----------------------------	----------

ASSOCIATIONS  
THAT GAVE THROUGH GEORGIA STATE COOPERATIVE GIVING

1. Georgia Union
2. Little River
3. Martin
4. Ogeechee
5. Union



# FIRST AND SECOND PLACE COOPERATIVE GIVERS BY ASSOCIATIONS

<u>Association</u>	<u>First Place</u>	<u>Second Place</u>
Chattahoochee	Thomaston, First	Little Bethel
Georgia Union	Double Branch	White Oaks
Little River	Homerville	Pine Level
Martin	New Salem	Corinth
Midway	Albany, First	Cedar Springs
North Georgia	Shallowford	North Fayette
Ogeechee	Augusta	Lyons
South Georgia	Jesup, First	Statesboro
Twin Cities	Calvary	White Rock
Union	Midway	Fellowship

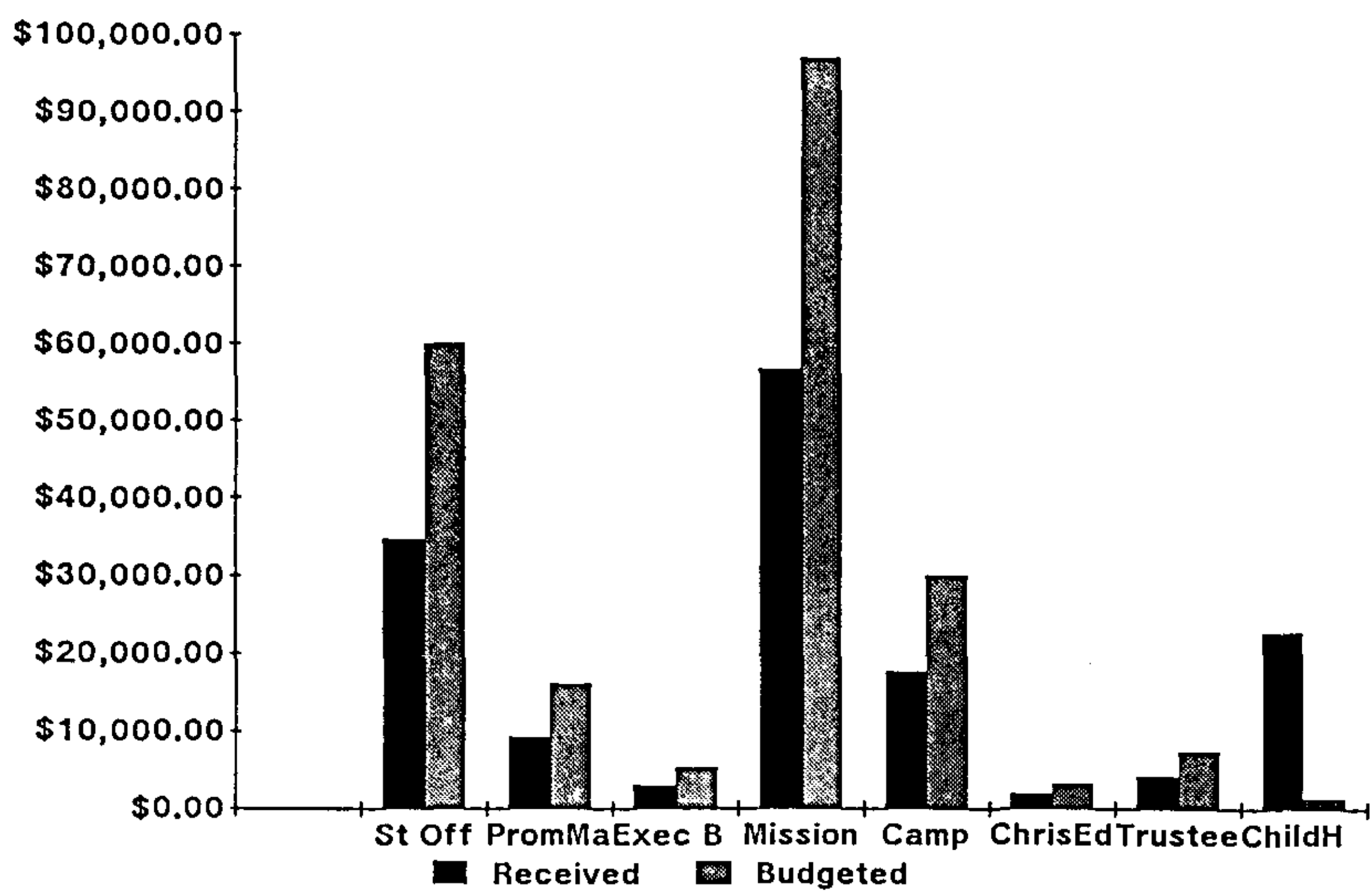
## NUMBER OF CHURCHES BY ASSOCIATIONS THAT GAVE THROUGH GEORGIA STATE COOPERATIVE GIVING

Chatthoochee	6
Georgia Union	12
Little River	8
Martin	8
Midway	13
North Georgia	4
Ogeechee	5
South Georgia	15
Twin Cities	3
Union	6

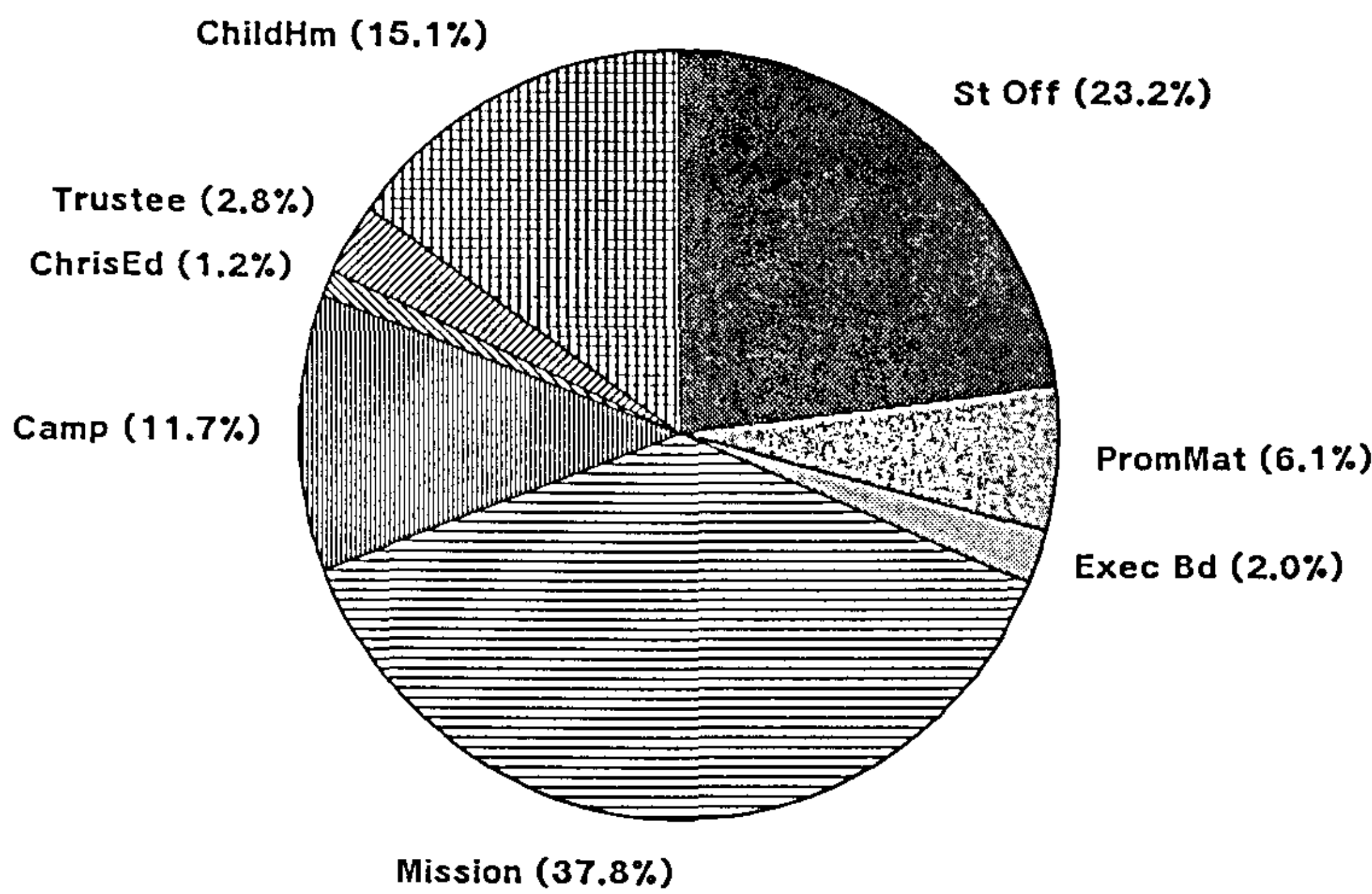
## WELCOME TO OUR NEW CHURCHES THAT GAVE \$1,000 IN 1989 THROUGH GEORGIA STATE COOPERATIVE GIVING

1.	White Rock, Twin Cities	( 8)
2.	Corinth, Little River	(23)
3.	Spring Hill, Union	(27)
4.	New Hope, Union	(28)
5.	Turners Chapel, Chattahoochee	(29)
6.	Ebenezer, South Georgia	(31)
7.	Alabaha, South Georgia	(34)
8.	Wilson Chapel, Georgia Union	(35)
9.	Dublin, First, Georgia Union	(36)

# Georgia Ministries Receipts 1989

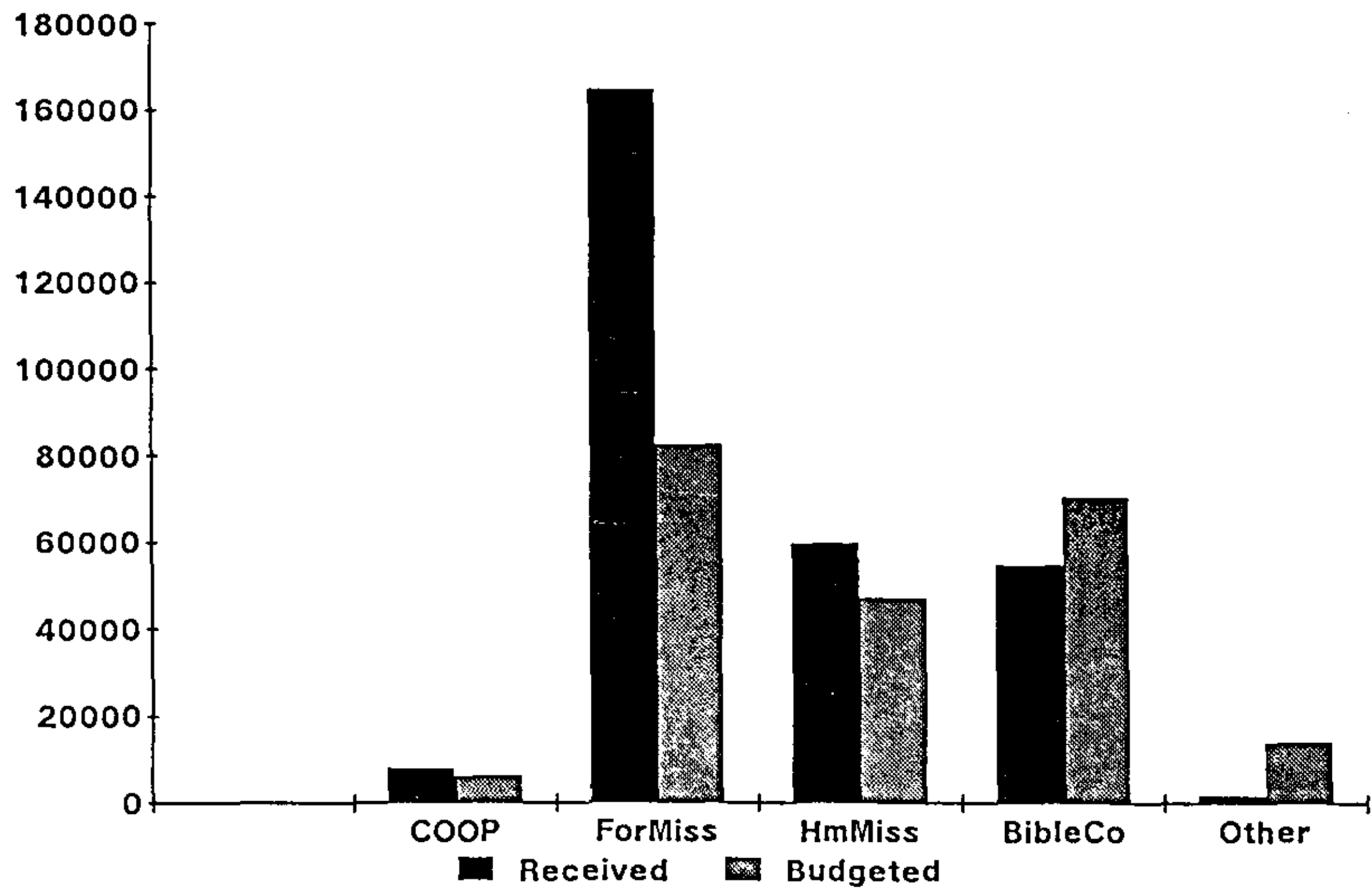


# Georgia Ministries Receipts 1989

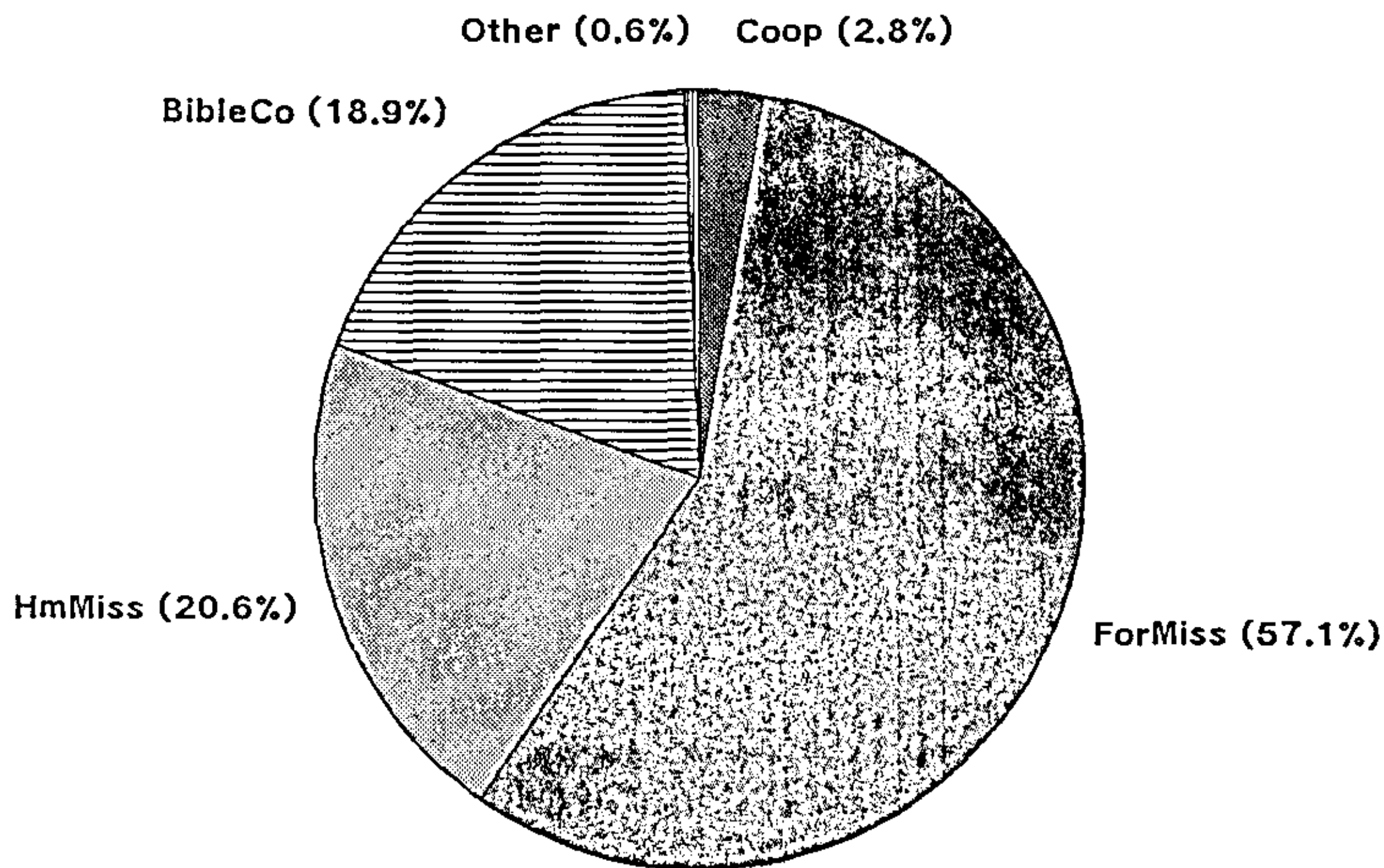




National Ministries  
Receipts 1989



National Ministries  
Receipts 1989



# GEORGIA STATE ASSOCIATION CHURCHES' FIVE YEAR GIVING OVERVIEW

	GEORGIA		NATIONAL		TOTALS	
1985	\$113,896.85	(34%)	\$220,798.41	(66%)	\$334,695.26	(100%)
1986	\$115,900.68	(31.5%)	\$251,468.05	(68.5%)	\$367,368.73	(100%)
1987	\$118,091.64	(30%)	\$279,870.31	(70%)	\$397,961.95	(100%)
1988	\$137,688.82	(34%)	\$264,586.06	(66%)	\$402,274.88	(100%)
1989	\$150,068.67	(34%)	\$288,598.57	(66%)	\$438,667.24	(100%)

## DIFFERENCES (+/-) YEAR BY YEAR IN DOLLARS AND PERCENTAGES

### GEORGIA

1985	\$113,896.85			
1986	\$115,900.68	\$ 2,003.83	(+) = 2%	(+)
1987	\$118,091.64	\$ 2,190.96	(+) = 2%	(+)
1988	\$137,688.82	\$19,597.18	(+) = 14%	(+)
1989	\$150,068.67	\$12,379.85	(+) = 8%	(+)

### NATIONAL

1985	\$220,798.41			
1986	\$251,468.05	\$30,669.64	(+) = 12%	(+)
1987	\$279,870.31	\$28,402.26	(+) = 10%	(+)
1988	\$264,586.06	\$15,284.25	(-) = 5%	(-)
1989	\$288,598.57	\$24,012.51	(+) = 8%	(+)

### TOTALS

1985	\$334,695.26			
1986	\$367,368.73	\$32,673.47	(+) = 9%	(+)
1987	\$397,961.95	\$30,593.22	(+) = 8%	(+)
1988	\$402,274.68	\$ 4,312.73	(+) = 1%	(+)
1989	\$438,667.24	\$36,392.56	(+) = 8%	(+)

## ANALYSIS OF FIVE YEAR PERIOD 1985 - 1989

### GEORGIA

1985	\$113,896.85			
1989	\$150,068.67	\$ 36,171.82	(+) = 24%	(+)

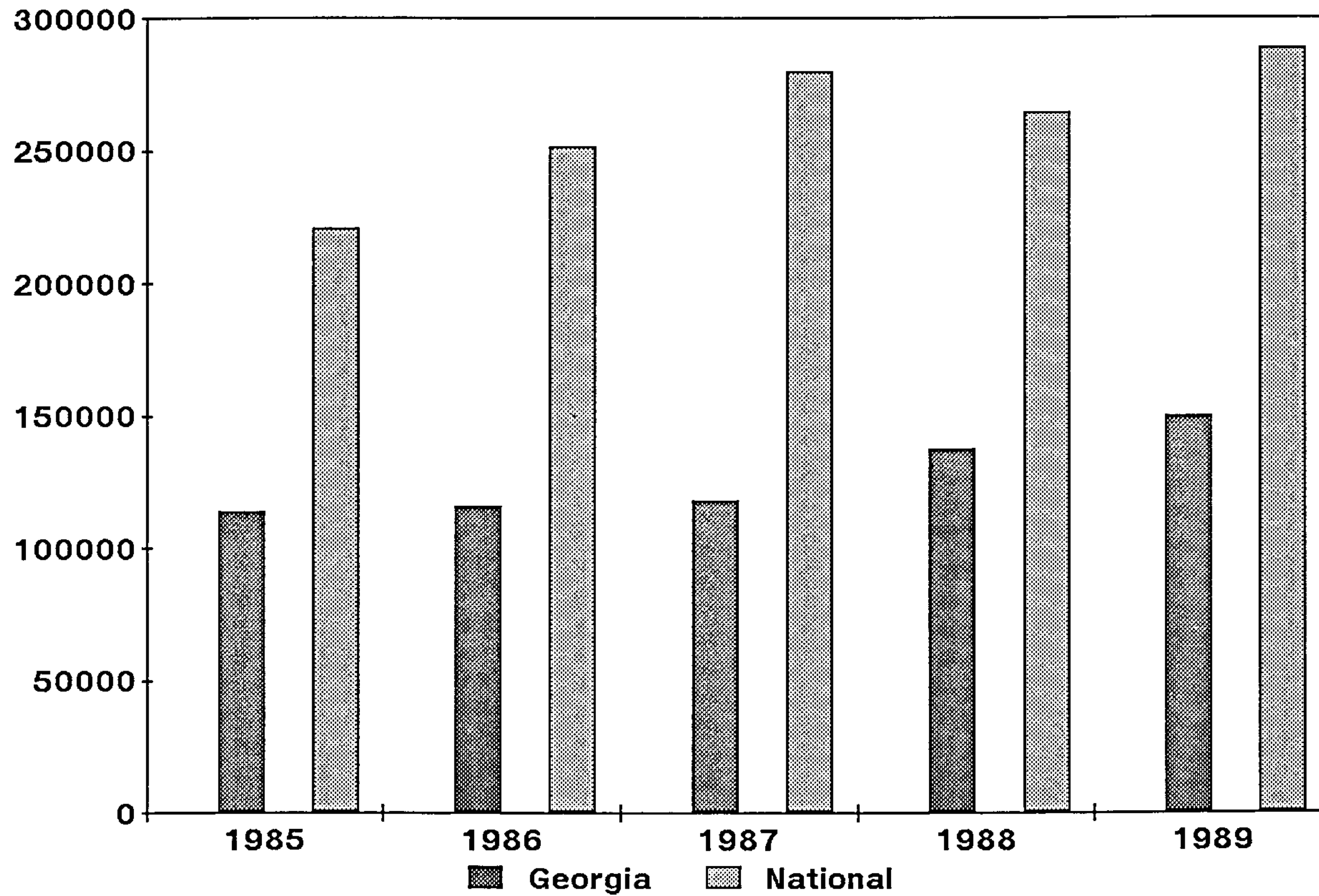
### NATIONAL

1985	\$220,798.41			
1989	\$288,598.57	\$ 67,800.16	(+) = 23%	(+)

### TOTALS

1985	\$334,695.26			
1989	\$438,667.24	\$103,971.98	(+) = 24%	(+)

## Five Year Overview



	C H A T T A H O C H E E	G E O R G I A  U N I O N	L I T T L E  R I V E R	M A R T I N	M I D W A Y	N O R T H  G E O R G I A	O G E E C H E E	S O U T H  G E O R G I A	T W I N  C I T I E S	U N I O N	T O T A L S
CHURCHES	12	16	13	11	16	5	8	23	5	11	120
MEMBERSHIP	1100	1252	860	710	1268		780	2567	401	786	9724
BAPTISMS	10	47	20	14	17		19	74	45	9	255
ORDAINED MINISTERS	14	26	15	11	16	3	11	33	7	12	148
LICENSED MINISTERS	1	3	2		3	2	1	1	1		14
ORDAINED DEACONS	35	55	36	41	77	4	21	86	16	37	408
SUNDAY SCHOOL ENROLLMENT	393	616	461	354	787	74	419	1426	270	494	5294
CTS ENROLLMENT	46	248	48	354	456		150	185	45	200	1732
WNAC MEMBERSHIP	28	90	46	73	147	12	89	268	41	66	860
MASTER'S MEN MEMBERSHIP	12	8	18	13	59	7	24	71	8	26	246
CHURCH INCOME	\$141,294	\$343,719	\$175,932	\$154,271	\$548,325	\$34,153	\$178,772	\$895,658	\$132,000	\$195,380	\$2,798,504
CHURCH PROPERTY VALUE	\$1,183,000	\$1,724,000	\$1,246,500	\$1,340,000	\$2,652,500	\$775,000	\$1,195,500	\$5,992,000	\$879,000	\$1,275,000	\$18,262,500

# ROLL CALL SUNDAY RESULTS - 1990

## CHATTAHOOCHEE ASSOCIATION:

Bethany	30
Little Bethel	72
Mt Olive	70
New Liberty	18
New Life	55
New Prospect, Taylor County	30
New Prospect, Turner County	35
Spring Hill	40
Thomaston, First	65
Trinity	30
Turners Chapel	43
Total for 11 churches	488

## GEORGIA UNION ASSOCIATION:

Bay Springs	56
Bethlehem	65
Christian Hill	20
Crossroads	51
Double Branch	100
Dublin, First	29
Eastman, First	47
Little Bethel	45
Mt Ararat	39
New Hope	42
Perry	15
Pine Level	70
Pleasant Hill	38
Warner Robins	24
White Oaks	133
Wilson Chapel	46
Total for 16 churches	820

## LITTLE RIVER ASSOCIATION:

Cool Springs	79
Corinth	61
Forest Hill	22
Friendship	30
Hahira, First	57
Homerville	76
Ozias	65
Pine Level	60
Sunnyside	45
Tifton, First	18
Valdosta, First	37
White Hall	91
Zion Hill	30
Total for 13 churches	671

## MARTIN ASSOCIATION:

Colquitt	47
Corinth	38
Donalsonville	12

Hebrew	13
Highway	20
Mothers Home	58
Mt Gilead	31
Mt Glory	20
New Home, Decatur County	45
New Home, Miller County	69
New Salem	55
Thompson	44
Total for 12 churches	452

## MIDWAY ASSOCIATION:

Albany, First	523
Bainbridge, First	20
Bellview	109
Berean	41
Blakely, First	54
Cedar Springs	40
Damascus	7
Enterprise	27
Hammock Springs	60
Macedonia	71
New Enterprise	40
New Light	67
Oak Grove	10
Patmos	54
Travelers Rest	60
White Plains	20
Total for 16 churches	1,203

## NORTH GEORGIA ASSOCIATION:

Athens	25
Decatur	14
North Fayette	55
Shallowford	34
Word of Life	17
Total for 5 churches	120

## OGEECHEE ASSOCIATION:

Augusta, First	27
Deep Creek	59
Friendship	42
Lower Corinth	55
Lyons	157
Marietta	102
Metter, First	115
Peace	9
Stoney Hill	36
Total for 9 churches	593

## SOUTH GEORGIA ASSOCIATION:

Alabaha	34
Baxley *(3)	453

Bethany	19
Bethel	63
Brunswick, First	63
Corinth	59
Ebenezer	104
Fellowship	14
Glennville	125
Harmony	115
Jesup, First	119
Liberty	24
Memorial	68
New Hope	135
Oak Hill	24
Philadelphia	76
Pine Level	112
Piney Grove	96
Satilla	101
Savannah, First	109
Spring Grove	109
Statesboro	33
Surrency	45
Swainsboro	47
Total for 24 churches	2,146

## TWIN CITIES ASSOCIATION:

Calvary	145
Columbus, First	71
Landmark	54
Weems Road	76
White Rock	130
Total for 5 churches	476

## UNION ASSOCIATION:

Bay	39
Cairo, First	50
Fellowship	44
Grace	92
Greenwood	13
Midway	93
New Hope	28
Poulan	35
Proctor Chapel	37
Spring Hill	37
Sylvester	69
Total for 11 churches	537

## GRAND TOTAL FOR 122 CHURCHES 7,540

\*Salvation Experiences 3



BOARD OF CAMPING REPORT  
November 1989 - November 1990

The Board is pleased to report a good year of work on your behalf at Camp Mt. Bethel. We reviewed the seven priority items to be done, as listed in last year's Camp Mt. Bethel report to the State Association, and laid plans to accomplish each one. We have a new septic tank drainage field installed at the boys dormitory, 25 new mattresses were purchased and canvas tarpaulins were fastened on top of the bunk springs. Space heaters were worked on, cooking utensils were bought and smoke detectors were installed.

We applaud the State Master's Men, and other concerned parties, for completing the installation of air conditioners in the two dormitories. This was done in time for the last camp session to enjoy comfortable sleeping.

We commend the Midway Association for purchasing the materials and our people who did the work of shingling the dining hall and the canteen; also the Union, South Georgia and Little River associations who together purchased the materials for shingling the boy's dormitory and the two picnic shelters. Several of our pastors laid these shingles. Rev. William Smith and Rev. Chuck Scarborough organized these projects. Many of our laymen helped, but mention should be made that Mr. M.G. (Bud) Shiver's fish suppers were a special encouragement to the workers.

The State Camp Director, Rev. Chuck Scarborough, planned and supervised another great year of camping. His regular staff members were: Evangelist, Rev. Jeff King; Cook, Mrs. Sarah Thompson; Caretaker, Mr. Jim Lamb; Lifeguard/Teacher/Fun Time Director, Mr. Chuck Lysaker. Each district association supplied volunteer workers for their session.

Seven 1990 camp sessions had a total of 312 campers, 77 workers and 37 visitors. Also counted were 37 salvation decisions, 49 rededications, two young men answered the call to preach and 52 other decisions. The success of our Teen Camp with Mr. Neil Gilliland, Director of Recruitment at the Free Will Baptist Bible College, has caused us to consider having two sessions next year, one in the Spring and the other in the Fall.

The Board of Camp Mt. Bethel has created a new, unsalaried position of "Grounds Director." He is answerable to the Board of Camp Mt. Bethel. He shall set priorities and coordinate all projects of the camp. His responsibility covers: WHAT is to be done, WHO is to do it, WHEN it is to be done and HOW it is to be done. Any group or individual wanting to have a special project at Camp Mt. Bethel is to work with the Grounds Director. As a result of a fall safety review, he has a list of proposed projects and their approximate costs. The current Grounds Director is Rev. William Smith.

The policies for Camp use, item VII as stated in the 1989 State Minutes was reviewed (The No Shorts clause) and each local director was enjoined to abide by the expressed desire of the State Association in session last year.

In October the Camp Board purchased a Fergusen 65 Series diesel tractor to be used in grounds maintenance.

We greatly appreciate the support we received from the Georgia State Budget because of COOP giving. These monies in conjunction with campers fees and private donations provide us with the funds needed to maintain Camp Mt. Bethel.

With your support and cooperation, we commit our board to maintaining a Christ centered camping ministry.

Respectfully submitted

Jack Lysaker, Chairman

BOARD OF CAMPING  
Statement of Cash Receipts and Disbursements  
for the year ended December 31, 1989

Balance January 1, 1989 \$ 4,944.91

RECEIPTS:

Cooperative and Designated Giving	\$17,598.86	
Registration	13,500.00	
Sessions Deposit	250.00	
Canteen Receipts	3,567.57	34,916.43
Total Accountable		<u>\$39,861.34</u>

DISBURSEMENTS:

Canteen	3,402.17		
Cook	1,400.00		
Director	1,400.00		
Electric	4,320.53		
Evangelist	1,750.00		
Food	8,044.20		
Gas	592.96		
Improvement:			
Basketball Equip	38.96		
Freezer	413.35		
Ice Machine	2,547.00		
Asphalt Seal	340.00		
Utility Shed	1,175.00		
Tarps	<u>810.90</u>	5,325.21	
Insurance		4,325.21	
Kitchen Supplies		1,027.96	
Literature		446.52	
Maintenance		2,088.34	
Mileage		1,552.35	
Salary (Caretaker)		600.00	
Supplies		552.44	
Telephone		<u>808.78</u>	<u>37,398.07</u>

Balance in Account December 31, 1989 \$ 2,463.27

MASTER'S MEN CAMP MT. BETHEL PROJECT

Balance January 1, 1989 \$ 8,006.97

Receipts:

Designated	593.00	
Total Accountable		<u>\$ 8,599.97</u>

Balance on hand December 31, 1989 \$ 8,599.97



## BOARD OF CHRISTIAN EDUCATION REPORT

November 1988 - November 1989

The Board of Christian Education met three times this year. Once at the "All-Boards" meeting in Macon at the White Oaks Church, February 10; and twice at the Corinth Church near Tifton, March 10th and August 25th. The members of our board have energetically attended the meetings this year. We have had at least 7 present for each meeting. This is an improvement over the last few years. The following report will inform you of the board's activities this year.

### MINISTER'S RETREAT

The Minister's Retreat was held in April with Tom Malone as our guest speaker. Brother Tom enriched our ministries with sensitive and practical messages from the Word via his heart. Four Georgia pastors made beneficial impressions upon us also. The attendance for this retreat was exceptional (24 ministers involved), the fellowship invigorating.

### COUPLES' RETREAT

The Couple's Retreat in September drew 10 couples, four of these for the first time. Sam Truett, pastor of the West Calvary Free Will Baptist Church, Smithfield, N.C. spoke on the Essential Elements of Successful Marriage. He related very well to the group on this relevant subject.

### STUDENT GIFTS

We have been able to give Georgia Free Will Baptist Bible College students a modest increase over the amount they received last year. Each student receives \$15.00 per month. The December gift will include an extra \$10.00. Presently we have 10 full time students attending and receiving these benefits. The students continue to express their gratitude for the gifts from their state. Although these gifts are small, they repeatedly reduce the economic apprehension of the students while they confirm Georgia's love through COOP Giving.

## STATE YOUTH CONFERENCE

The State Youth Conference registered 210 this year with 93 young people involved in the competitive activities. We commend those pastors, churches, and laymen who worked with their youth and brought them to this event. Each participant did well, and of those who went to the National level, Georgia had some winners (see August Promotional Bulletin).

## HISTORICAL SOCIETY

One article has been published this year and a questionnaire designed to assist a society member or anyone else in obtaining information on our senior pastors. A questionnaire on the church is forthcoming. The society requests your assistance in gathering and preserving our historical information.

## TAX SEMINAR

Pursuant to our constitutional mandate, the board is trying to provide educational services to Georgia Free Will Baptists. This year the Board of Christian Education sponsored a seminar during our Bible Conference dealing with taxes. Being good stewards of our money is a real challenge today and a Divine responsibility. We trust the seminar information was useful to you.

## DATES TO REMEMBER

Minister's Retreat - April 8-10, 1991  
Speaker is Harrold Harrison  
Youth Conference - May 10-11, 1991,  
Speaker is Terry Pierce  
Couples' Retreat - September 20-21, 1991,  
Speaker is Don Hill

Respectfully Submitted,

Willie C. Martin, Chairman

BOARD OF CHRISTIAN EDUCATION  
Statement of Cash Receipts and Disbursements  
for the year ended December 31, 1989

Balance January 1, 1989 \$ 6,587.51

RECEIPTS:

Cooperative Giving	\$1,838.25	
Historical Society Dues	13.00	
Minister Retreat Room/Board	620.00	
Pastor/Wife Retreat Room/Board	182.00	
Youth Conference Competition	430.00	
Youth Conference Room/Meals	2,693.50	
Youth Conference Refund on National Fees	<u>10.00</u>	<u>5,787.00</u>

TOTAL ACCOUNTABLE \$12,374.51

DISBURSEMENTS:

Couple's Retreat	\$ 573.90	
Gifts to Bible College Students	1,955.00	
Historical Society	40.76	
Mileage	217.96	
Minister's Retreat	1,312.96	
Pastor/Wife Retreat	496.01	
Phone & Postage	129.56	
Youth Conference	<u>3,231.86</u>	<u>7,958.01</u>

Balance in account December 31, 1989 \$ 4,416.50

## BOARD OF MISSIONS REPORT

November 1989 - November 1990

Your Board of Missions has had another productive year filled with challenges and praises.

We met with the All-Boards Meeting in January. There was a short Mission Board meeting. Brother Burns reported on the progress of the North Fayette work. Additional funds were needed for the completion of the building and grounds in order to receive an occupancy permit to conduct services on the premises. The cost over-runs have caused the Board concern. However, because the North Fayette Mission/Church is the property of the State Association and is assigned to the State Board of Missions, we loaned the requested money to them from our funds on hand. Dedication of the beautiful new building was held on May 6.

While we were at the State Association meeting last year, we received word that Rev. Buddy Henry had already left the Dublin Mission/Church. Brother Albert Rollins accepted the call to go to Dublin from April, 1990 and has been doing an outstanding job there. We appreciate the several men who had a part in keeping the Dublin Mission/Church going during the transition period.

In December 1989, a delegation from the First Free Will Baptist Church of Tifton presented us a proposal. They asked for help in finding and supporting a pastor for one year. If the church is not doing well at the end of that time then the church's properties would be signed over to the State Association. The Board felt 12 months would not be long enough and recommended an 18 month trial period which was agreeable to the Tifton church people. Rev. William Smith accepted the challenge and went to Tifton in February 1990. Since being there, Brother Smith, area pastors, laymen and others have done an outstanding job of restoring the building and grounds. Other churches have been very involved in a variety of ways. We praise the Lord for what has been accomplished in Tifton. Pastor Smith has resigned effective November 15, 1990.

The Athens Church has approached the Board for help. Consequently, we have been working in concert with them attempting to secure someone to serve as the pastor in our University City.

Brothers Rex Lynn and Brian Ray have become our newest Georgia State missionaries. Brother Lynn is also a National

Association Associate Home Missionary. He and his family have moved to Rome, Georgia. He is now visiting our churches soliciting prayer and financial support for his mission work in Rome. Brother Ray and his family are trying to establish a Free Will Baptist church ministry in East Atlanta. Pray for the needs of these ministries.

Your Mission Board praises the Lord for His blessings on our church planting and church growth efforts. We also thank you for supporting us in this effort. We have had some hard decisions to make. They have not been made without prayer and faith that the Lord will meet our needs.

Thank you, District Associations, for the faithful, spiritual men that you have sent to serve on the Georgia State Board of Missions.

Respectfully submitted

Malcom Freeman, Chairman

BOARD OF MISSIONS  
Staement of Cash Receipts and Disbursements  
for the year ended December 31, 1989

Balance January 1, 1989			\$ 59,335.79
RECEIPTS:			
Cooperative Giving	\$56,610.90		
Designated Giving	4,747.75		
Northside Church Bond	<u>1,060.00</u>	<u>62,418.65</u>	
TOTAL ACCOUNTABLE			\$121,754.44
DISBURSEMENTS:			
Dublin Mission	\$12,320.00		
Gainesville Church Loan (LMCBF)	690.00		
Living Memorial Ch Bldg Fund 10%	5,654.07		
Mileage	2,341.47		
North Fayette Church	12,000.00		
Ogeechee Dist Mission Board	9,655.77		
Telephone	81.72		
Transfer to LMCBF	<u>41,250.00</u>	<u>87,955.78</u>	
Balance in account December 31, 1989			<u>\$ 33,798.66</u>

LIVING MEMORIAL CHURCH BUILDING FUND  
Statement of Cash Receipts and Disbursements  
for the year ended December 31, 1989

Balance on hand January 1, 1989			\$ 19,875.07
RECEIPTS:			
Transfer 10% from General Fund	\$ 5,654.07		
Transfer from General Fund	41,250.00		
Gainesville Church Loan	690.00		
Northside Church Loan	1,158.97		
Ogeechee District Loan	<u>2,203.78</u>	<u>50,957.17</u>	
TOTAL ACCOUNTABLE			\$70,832.24
DISBURSEMENTS:			
Ogeechee District 2nd Loan	\$15,000.00		
North Fayette Church Loan	<u>54,085.28</u>	<u>69,085.28</u>	
Balance in account December 31, 1989			<u>\$ 1,746.96</u>

## BOARD OF TRUSTEES REPORT

November 1989 - November 1990

The Georgia State Board of Trustees maintains adequate insurance on all State Association property. Our insurance policy is a multi-peril policy with the Church Mutual Insurance Company. Camp Mt. Bethel's property is covered in this policy. The Board of Camp Mt. Bethel pays the part of the premium that insures their property, the Camp Caretaker's workers' comp and the provision for their camper's accident coverage.

During this past year we have had some up-keep and improvements at the State Office. Inside, a rotten place in the kitchen floor was repaired and the kitchen floor was covered. The living room, dining room, the bed rooms and the hallway were carpeted. Outside, the painted surfaces were pressure cleaned of mold and prepared for painting. A rotten screen door was replaced, the windows were glazed and the wood surfaces were painted. Some of this would be considered to be improvements but most was maintaining our investment in the property.

Thank you for your church's Georgia State COOPorative giving. Our Board receives all of our operating funds from the State Budget that is funded by the State COOPorative giving churches. We could not function without your support of the Georgia State Budget.

It has been an honor to serve you in this ministry.

Respectfully submitted,

Emmett Dunaway, Chairman



BOARD OF TRUSTEES  
Statement of Cash Receipts and Disbursements  
for the year ended December 31, 1989

Balance on hand January 1, 1989			\$3,470.53
RECEIPTS:			
Cooperative Giving		\$4,611.25	
Insurance Refund		<u>48.78</u>	<u>4,660.03</u>
Total Accountable			<u>\$8,130.56</u>
DISBURSEMENTS:			
State Office Carpet	\$1,759.57		
State Office Appraisal	200.00		
State Office Maintenance	1,182.79		
Insurance	<u>1,517.67</u>		<u>4,660.63</u>
Balance on hand December 31, 1989			<u>\$3,469.93</u>

## RESOLUTIONS

1. WHEREAS, Georgia State Missionaries are a very important part of our State Ministries, and

WHEREAS, they are almost fully supported by our churches in Georgia, and

WHEREAS, it is important that our missionaries attend the annual State Meeting; and, there are at times financial considerations that prevent them from attending the meeting; therefore,

BE IT RESOLVED, that the State Missions Board make provision for missionaries under their auspices to attend the State Meeting by providing the funds needed for travel and lodging.

2. WHEREAS, the staff and personnel of Norman Baptist Assembly treat us with such a cordial and affable spirit during our stay; therefore,

BE IT RESOLVED, that the Georgia State Association go on record as being grateful and appreciative for the use of these facilities and the helpfulness of the personnel providing services; and that a copy of this resolution be forwarded to the administrator of Norman Baptist Assembly.

## COMMITTEE OF TEN REPORT

During the fifty-third annual session of the Georgia State Association of Free Will Baptists, one item of business focused on the relocation of the State Office/Home. The Executive Board made a series of recommendations. Item number one indicated "That the office/home be relocated" which carried by a 72 to 35 vote.

Item number two, "That we relocate to the Greater Macon, Georgia area" carried by a 59 to 42 vote.

Item number three, "That we rent or lease office space and housing in whatever town that might be" was defeated by a 59 to 34 vote.

Item number four was, "That we liquidate the present property and at the appropriate time purchase property and build an office." A motion was made to adopt this item; however a substitute motion was made. The minutes of the fifty-third annual session indicate the following:

"After much discussion, a Substitute Motion was made to defer the matter until the 1990 Session and that a layman from each association selected by his association, his expenses underwritten by his association, make up a ten (10) man committee whose responsibility will be to make a cost feasibility study, to include site and building costs and bring such findings to the 1990 Session of the State Association. The Substitute Motion carried by a 64 to 39 vote. The names of these men are to be sent into the State Office as soon as possible. The State Executive Secretary will coordinate this information, set a meeting and place and give general oversight to the Committee."

After the charge from the Executive Secretary for each association to select a layman to represent their association was completed, he set the first meeting for the Committee of Ten on February 17, 1990 at the White Oaks Free Will Baptist Church, Macon, Georgia. (See Appendix A for a roster of the Committee of Ten.)

During the course of the first meeting, Mr. Grover Jewell was selected as the chairman of the Committee of Ten and three subcommittees were formed. The three subcommittees are: a Site Subcommittee, a Building Subcommittee and a Finance Subcommittee. During the ensuing months the whole committee met four more times to review the results of the subcommittees' work.

### SITE SUBCOMMITTEE FINDINGS

The Site Subcommittee is composed of Mr. Daniel Dinkins, Chairman, and associate members Mr. Steve Williams and Mr. Bill Lewis. The subcommittee reported that their choice of a site is located off of I-475 in Macon next to the Cattleman's Association Headquarters. The cost of the lot is reported to be \$40,000.00. High visibility from Interstate 475 is one of the primary advantages of this location. (See Appendix B for a map showing the location.)

### BUILDING SUBCOMMITTEE PROPOSED BUILDING PLANS AND ESTIMATED COST

The Building Subcommittee is chaired by Mr. Charles Shierling, with two associate members, Mr. E.A. Welch, Jr. and Mr. Gary Abell. Mr. Shierling's architect developed a proposed building sketch that was shared with the Committee. (See Appendix C.) In addition, Mr. Shierling developed an estimated cost of the proposed building which was also distributed to the Committee members. The estimated cost of the project is reported to be \$199,110.00. (See Appendix D.)

### FINANCE SUBCOMMITTEE RESEARCH

The Chairman of the Finance Subcommittee is Mr. Lamar Brooks and the two associate members are Mr. Lynn Frazier and Mr. Jack Wallace. This subcommittee contacted a bank in Macon and a bank in Colquitt. The best bank financing, based on a \$250,000.00 loan, was at an interest rate of 11 1/4% for 15 years. The monthly payment would be \$2,883.27, which amounted to a total cost of \$518,984.32. With the approval of the Finance Subcommittee, Mr. Grover Jewell contacted Mr. Skip Johnson of the Johnson Bonding Agency and requested that he present a bond proposal based on \$264,000.00, which included a \$250,000.00 loan plus 5% of \$250,000.00 plus \$1,000.00 for issuing the bonds. The monthly payment would be \$2,574.81 for 15 years, with a total payback of \$477,462.28. The amount paid per year would be \$30,897.72.

## CONCLUSIONS

1. We, the Committee of Ten, submit the above Site Subcommittee's recommendation and the Building Subcommittee's concept for the State Association's approval.
2. The Finance Subcommittee projects the cost of the lot and building, if financed by a bond program, would require payments of \$30,897.72 per year for fifteen years. Realizing this project annually would absorb approximately one-third of the monies presently given for Georgia State ministries, it is the the consensus of the Committee of Ten that it would be a serious mistake to attempt to finance this project from the existing budget.
3. We recommend a NEW STATE OFFICE LAND AND BUILDING FUND be established and that it be promoted across the State by the Executive Secretary/Treasurer.

Respectfully submitted

Mr. Grover Jewell, Committee of Ten Chairman  
Mr. Daniel Dinkins, Site Subcommittee Chairman  
Mr. William Lewis, Site Subcommittee Member  
Mr. Steve Williams, Site Subcommittee Member  
Mr. Charles Shierling, Building Subcommittee Chairman  
Mr. Gary Abell, Building Subcommittee Member  
Mr. E.A. Welch, Jr., Building Subcommittee Member  
Mr. Lamar Brooks, Finance Subcommittee Chairman  
Mr. Lynn Frazier, Finance Subcommittee Member and  
Committee Secretary  
Mr. Jack Wallace, Finance Subcommittee Member

## WHAT IS THE PER CAPITA COST OF BUILDING A PROPER STATE OFFICE?

For one family to commit themselves to pay a missionary family's total support probably would not be realistic. For a single family to even undertake paying the total cost of their pastor's livelihood, for most of us, would be a financial burden too great to assume. But by working together with other Free Will Baptist families our local ministries and those beyond can flourish. The real cost is relative to the number of people helping.

The estimated cost today for the proposed State Office property and the basic building is more or less \$200,000. Unforeseen factors may drive up the final cost. We would hope we could raise the money soon enough that inflation costs would not "snowball" on us. The \$200,000 price tag is as realistic as we can make it but time changes the cost of things. One may remember when there was a penny post card and a first class postage stamp cost three cents.

We are not suggesting that anytime in the near future the proposed State Office would cost \$300,000. However, to calculate the cost on the basis of the number of people who should be helping to pay the cost, we will use the unrealistic inflated cost of \$300,000. If we were just trying to sell a package we would decrease this number, not inflate it. We are exaggerating the cost factor in an effort to be extremely conservative.

If we count the total Georgia State Association of Free Will Baptists' membership reported last year against the inflated \$300,000 cost, we will have this equation:

$\$300,000 \text{ cost} / 9,724 \text{ reported church members in 1989} = \$30.85 \text{ equal cost to each church member.}$

If we count the 1990 Roll Call Sunday attendance against the \$300,000 cost we have:

$\$300,000 / 7,540 \text{ Roll Call Sunday attendance} = \$39.79 \text{ cost per worshiper.}$

If half of our church members are gainfully employed, we could conceptualize the equal individual cost to our working church members as being:

$\$300,000 / 4,862 \text{ workers} = \$61.70 \text{ per working church member.}$



These calculations are only an effort to help us keep the cost factor in a realistic frame of reference. Some will not be able to give an appreciable amount. Others will choose not to give anything. Most will want to have a meaningful part in building a real State Office in the geographical center of Georgia. Some will want to make a sizeable contribution. Maybe someone will choose to buy the land. Others may want to match the gift. Several will be able to give one, two, five or even ten thousand dollars. Our average church family will be able to give five or ten dollars monthly for ten or so months. To give five dollars a month from January through October will generate \$50.00. Double the five dollars to ten dollars and the sum will be \$100.

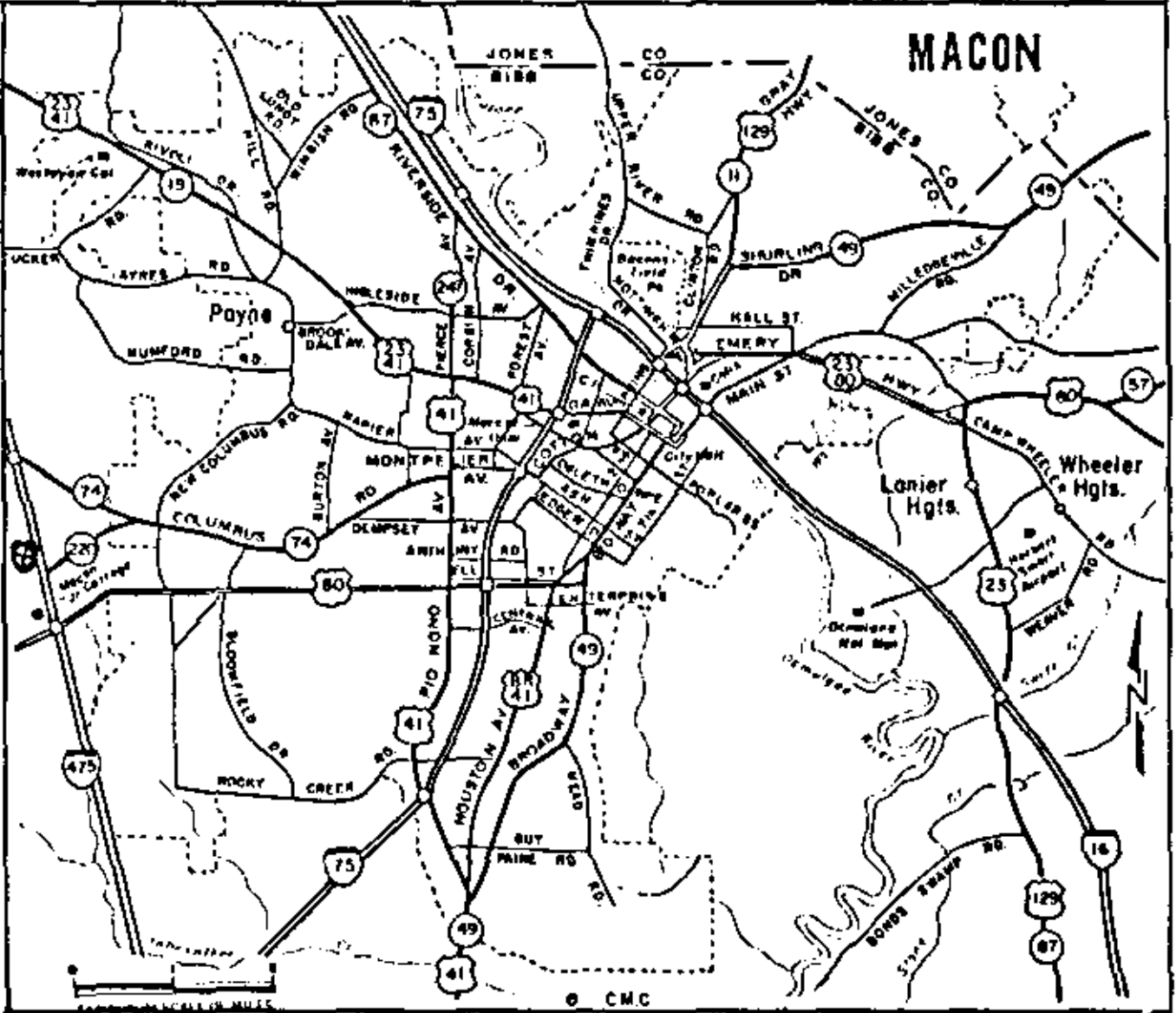
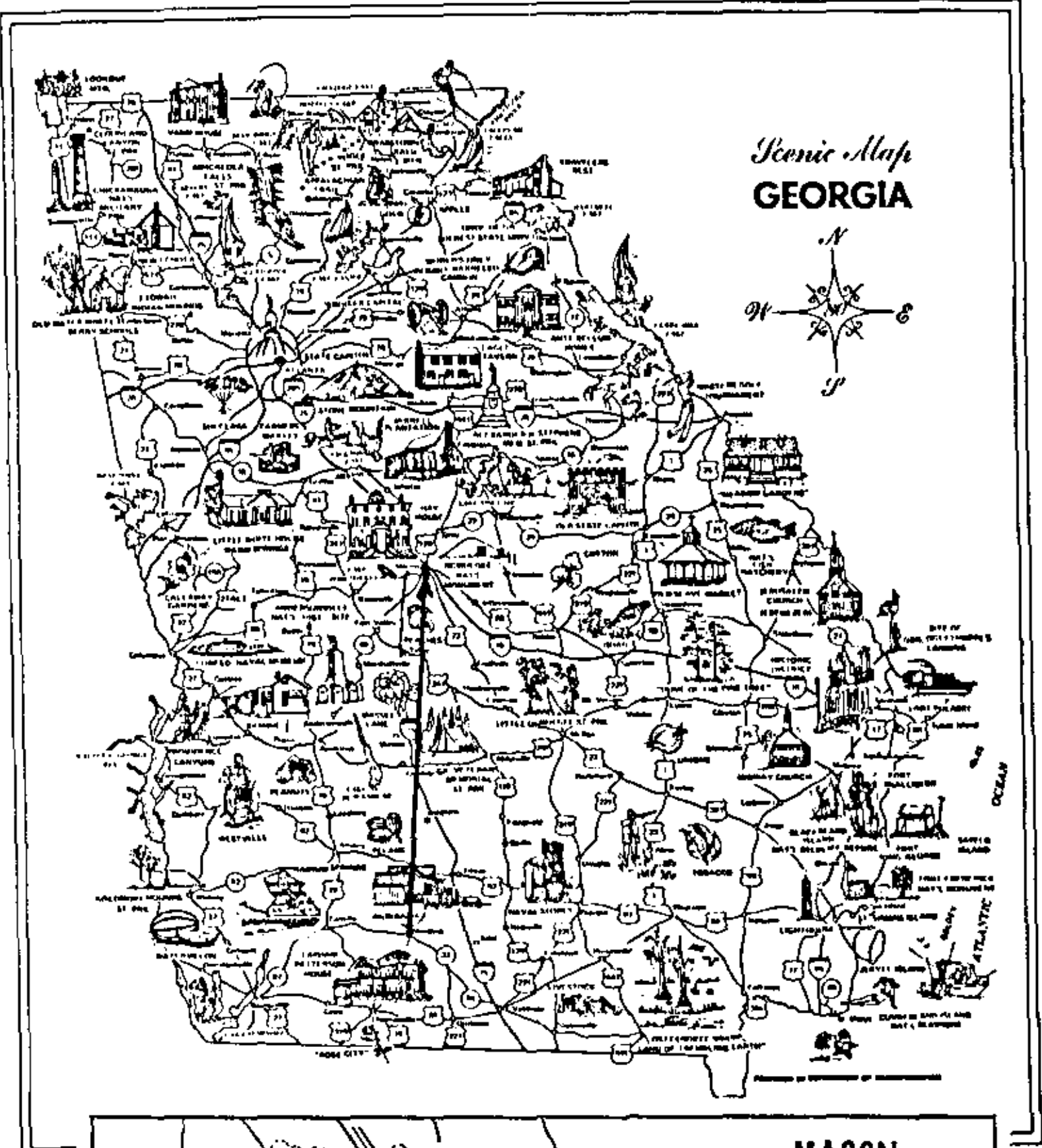
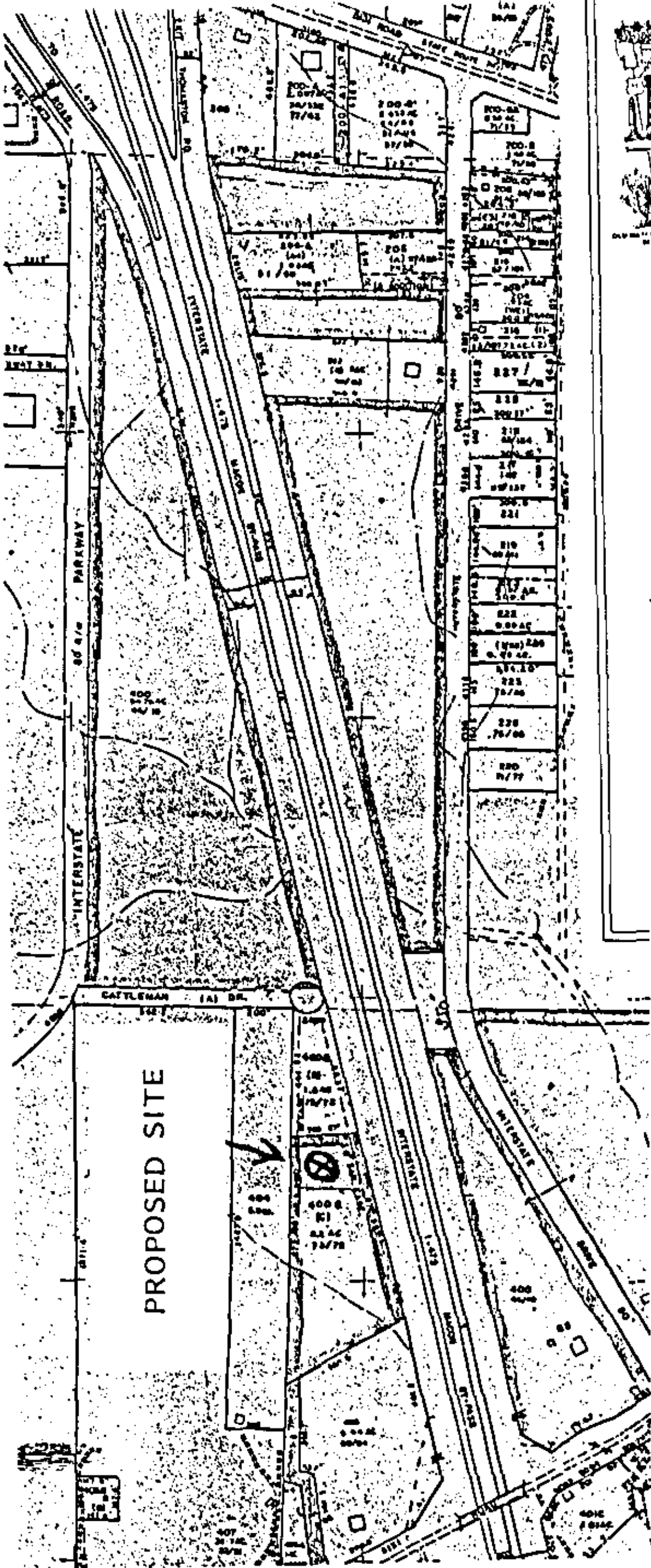
Meantime, not calculated in the above cost factor is an asset the Georgia State Association of Free Will Baptists owns that could be liquidated--the Moultrie property. Hopefully, the State would realize \$40,000 to \$45,000 from its sale.

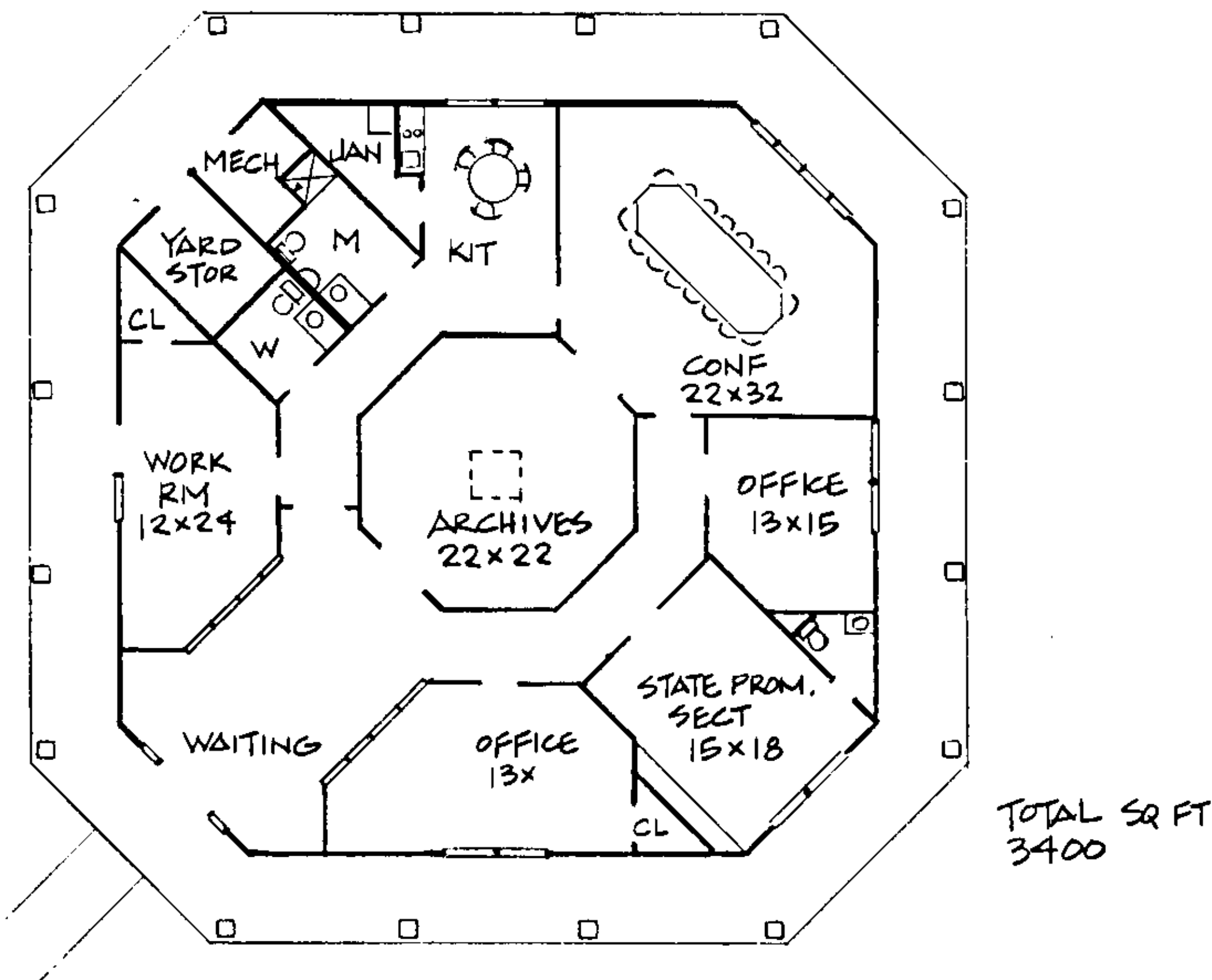
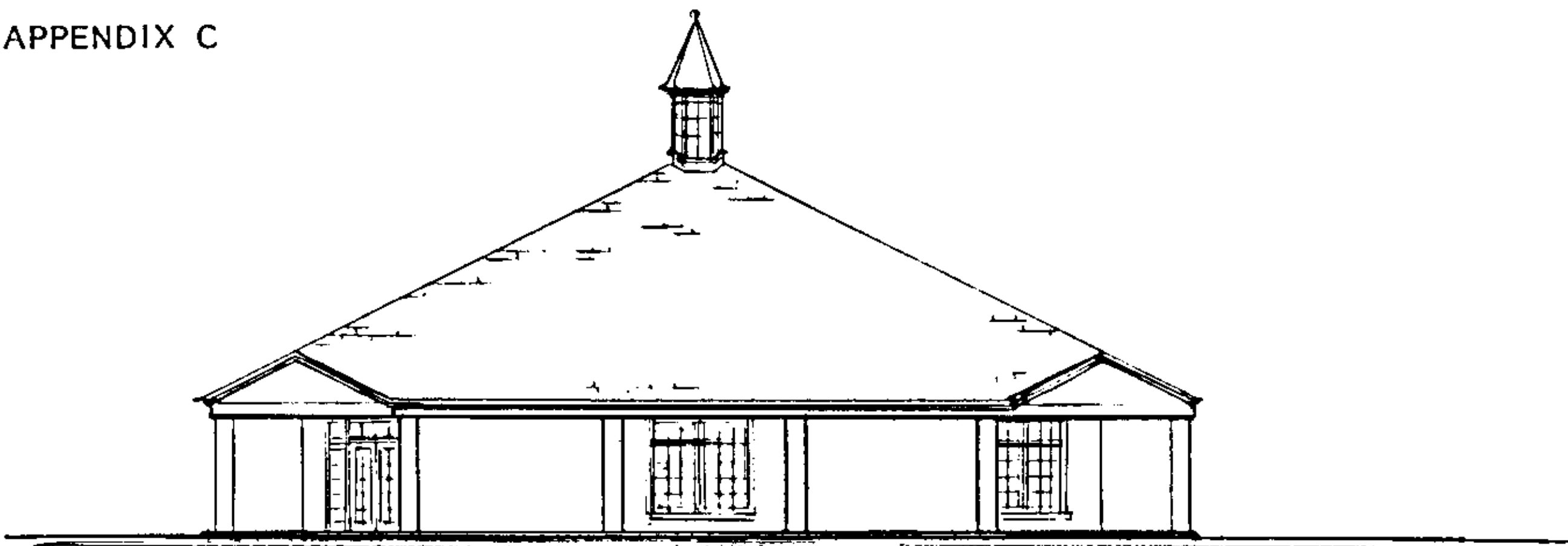
The New State Office Land and Building Project must not take away from any ministry we are now doing. The funds needed to build a proper State Office can be generated without decreasing giving for any local, State or National ministry. This project can stand on its own. It is worthy. By working together, each doing his part, we could have the total cost collected before next year at this time. Thinking very positively, the new State Office just might be ready for occupancy by then.

APPENDIX A

COMMITTEE OF TEN - 1990

CHATTAHOOCHEE	Mr. E. A. Welch, Jr. RR 1 Box 252 Mauk GA 31058 912/862-3356
GEORGIA UNION	Mr. Grover Jewell 2916 Markingham Drive Macon GA 31206 912/781-4407
LITTLE RIVER	Mr. Gary Abell RR 4 Box 2680 Tifton GA 31794 912/382-8468
MARTIN	Mr. Lynn Frazier 811 Rose Circle Bainbridge GA 31717 912/246-4078
MIDWAY	Mr. Lamar Brooks RR 2 Box 14 Colquitt GA 31737 912/758-2379
NORTH GEORGIA	Mr. Jack Wallace 4518 Lashley Court Marietta GA 30067 404/565-3056
OGEECHEE	Mr. Steve Williams PO Box 261 Lyons GA 30436 912/526-6314
SOUTH GEORGIA	Mr. Daniel R. Dinkins 101 Oak Street Folkston GA 31537 912/496-7056
TWIN CITIES	Mr. Charles Shierling 5250 Litchfield Rd Columbus GA 31904
UNION	Mr. William Lewis RR 4 Box 369 Moultrie GA 31768 912/941-5444





PROPOSED STATE OFFICE BUILDING FOR THE  
FREE WILL BAPTIST OF GEORGIA

COST ESTIMATE REPORT

FOR:  
 GEORGIA STATE FREEWILL BAPTIST OFFICE MACON GA.  
 HERBERT WAID PROMOTIONAL SECRETARY  
 MACON, GA

SEQ. NO.	DISC.	PHASE	DESCRIPTION:	MATERIAL COST:	LABOR COST:	TOTAL COST:
230	1200	1	SUPERVISION		\$9,750.00	\$9,750.00
236	1460		PERMIT FEES	\$1,850.00		\$1,850.00
231	1465		PROJECT OFFICE	\$750.00		\$750.00
233	1465		TEMPORARY ELECTRICAL	\$1,750.00		\$1,750.00
234	1465		TEMPORARY WATER	\$750.00		\$750.00
235	1465		PORTA-TOILET	\$375.00		\$375.00
232	1465		PROJECT TELEPHONE	\$500.00		\$500.00
237	1465		BUILDERS INSURANCE	\$2,450.00		\$2,450.00
238	1465		OFFICE SUPPLIES	\$250.00		\$250.00
						\$6,825.00
243	2130		REMOVE & REPLACE TOPSOIL	\$350.00	\$450.00	\$800.00
242	2130		SITE CLEARING	\$1,250.00	\$1,475.00	\$2,725.00
						\$3,525.00
244	2230		GRADING SITE	\$975.00	\$1,850.00	\$2,825.00
245	2280		CLEANUP	\$275.00	\$750.00	\$1,025.00
246	2310		TERMITE CONTROL	\$650.00		\$650.00
240	2610		SANITARY SEWER	\$750.00	\$1,258.00	\$2,008.00
239	2620		WATER DISTRIBUTION	\$1,850.00	\$2,150.00	\$4,000.00
241	2640		ELECTRICAL DISTRIBUTION TO BUILDING	\$1,578.00	\$750.00	\$2,328.00
247	2710		BASE & PAVING	\$12,750.00		\$12,750.00
248	2820		SIGN IN FRONT OF BUILDING	\$1,850.00		\$1,850.00
249	2910		LANDSCAPING & SPRINKLER SYSTEM	\$4,975.00		\$4,975.00
250	3110		CURB & GUTTER AND SIDEWALK	\$1,250.00		\$1,250.00
251	3415		CONCRETE FOUNDATION AND FLOOR SLAB	\$4,572.00	\$3,240.00	\$7,812.00
252	4310		BRICK VENEER	\$4,250.00	\$3,975.00	\$8,225.00
253	6110		CARPENTRY FRAMING	\$13,325.00	\$12,750.00	\$26,075.00
254	6410		FINISH CARPENTRY	\$1,875.00	\$1,596.00	\$3,471.00
255	7110		ROOFING	\$2,280.00	\$2,400.00	\$4,680.00
256	7310		INSULATION WALLS	\$975.00	\$1,150.00	\$2,125.00
257	8218		DOORS FRAMES AND HARDWARE	\$2,375.00	\$800.00	\$3,175.00
258	8410		WINDOWS	\$4,712.00	\$875.00	\$5,587.00
259	9110		GYPSUM WALLBOARD	\$3,475.00	\$2,124.00	\$5,599.00
260	9210		ACOUSTICAL CEILING AND INSULATION	\$4,150.00	\$1,876.00	\$6,026.00
261	9701		CARPET AND FLOORING COVERING	\$5,896.00	\$1,697.00	\$7,593.00
262	9910		PAINTING AND WALL COVERING	\$2,150.00	\$2,786.00	\$4,936.00
263	10810		TOILET ACCESSORIES PARTITION	\$875.00	\$200.00	\$1,075.00
264	12010		OFFICE FURNITURE	\$14,750.00		\$14,750.00
265	15010		H.V.A.C.	\$9,072.00	\$6,120.00	\$15,192.00
266	15410		PLUMBING	\$1,875.00	\$1,465.00	\$3,340.00
267	16010		ELECTRICAL	\$8,681.00	\$4,674.00	\$13,355.00
268	16410		SECURITY SYSTEM	\$1,250.00	\$1,575.00	\$2,825.00
			TOTAL	\$123,716.00	\$67,736.00	\$191,452.00



COST ESTIMATE RECAP

GEORGIA STATE FREEWILL BAPTIST OFFICE MACON GA.  
HERBERT WAID PROMOTIONAL SECRETARY

MACON GA

	MATERIAL COST:	LABOR COST:	TOTAL COST:	COST PER SQ FT:	% COST OF TOTAL:
1000 GENERAL REQUIREMENTS	\$8,675.00	\$9,750.00	\$18,425.00	\$5.42	9.62%
2000 SITE WORK	\$27,253.00	\$8,683.00	\$35,936.00	\$10.57	18.77%
3000 CONCRETE	\$5,822.00	\$3,240.00	\$9,062.00	\$2.66	4.73%
4000 MASONRY	\$4,250.00	\$3,975.00	\$8,225.00	\$2.42	4.30%
5000 METALS	\$0.00	\$0.00	\$0.00	\$0.00	0.00%
6000 CARPENTRY	\$15,200.00	\$14,346.00	\$29,546.00	\$8.69	15.43%
7000 MOISTURE PROTECTION	\$3,255.00	\$3,550.00	\$6,805.00	\$2.00	3.56%
8000 DOORS & WINDOWS	\$7,087.00	\$1,675.00	\$8,762.00	\$2.58	4.58%
9000 FINISHES	\$15,671.00	\$8,483.00	\$24,154.00	\$7.10	12.62%
10000 SPECIALTIES	\$875.00	\$200.00	\$1,075.00	\$0.32	0.56%
11000 EQUIPMENT	\$0.00	\$0.00	\$0.00	\$0.00	0.00%
12000 FURNISHINGS	\$14,750.00	\$0.00	\$14,750.00	\$4.34	7.70%
13000 SPECIAL CONSTRUCTION	\$0.00	\$0.00	\$0.00	\$0.00	0.00%
14000 CONVEYING SYSTEMS	\$0.00	\$0.00	\$0.00	\$0.00	0.00%
15000 MECHANICAL	\$10,947.00	\$7,585.00	\$18,532.00	\$5.45	9.68%
16000 ELECTRICAL	\$9,931.00	\$6,249.00	\$16,180.00	\$4.76	8.45%
BUILDING TOTAL	\$123,716.00	\$67,736.00	\$191,452.00	\$56.31	100.00%



COST ESTIMATE SUMMARY - MAY 05

GEORGIA STATE FREEWILL BAPTIST OFFICE    MACON GA.  
HERBERT WAID PROMOTIONAL SECRETARY  
MACON GA

TOTAL SQUARE FEET: 3,400      COST PER SQUARE FOOT: \$58.56

DIVISION	TOTAL COST:
-----	-----
1000 GENERAL REQUIREMENTS	\$18,425.00
2000 SITE WORK	\$35,936.00
	-----
SUBTOTAL	\$54,361.00
3000 CONCRETE	\$9,062.00
4000 MASONRY	\$8,225.00
5000 METALS	\$0.00
6000 CARPENTRY	\$29,546.00
7000 MOISTURE PROTECTION	\$6,805.00
8000 DOORS & WINDOWS	\$8,762.00
9000 FINISHES	\$24,154.00
10000 SPECIALTIES	\$1,075.00
11000 EQUIPMENT	\$0.00
12000 FURNISHINGS	\$14,750.00
13000 SPECIAL CONSTRUCTION	\$0.00
14000 CONVEYING SYSTEMS	\$0.00
15000 MECHANICAL	\$18,532.00
16000 ELECTRICAL	\$16,180.00
	-----
SUBTOTAL	\$137,091.00
17000 CONTINGENCY RESERVE	\$0.00
18000 BROKERAGE FEE	\$0.00
19000 ARCHITECTURAL FEE	\$7,658.00
20000 CONSULTANTS FEE	\$0.00
21000 ESCALATION	\$0.00
	-----
SUBTOTAL	\$7,658.00
	=====
GRAND TOTAL	\$199,110.00

DATE: \_\_\_\_\_  
APPROVED: \_\_\_\_\_

## MINUTES OF GEORGIA STATE WOMAN'S AUXILIARY CONVENTION

The Georgia State Woman's Auxiliary Convention held its annual meeting November 14-15, 1990, at the Norman Baptist Assembly, Norman Park, Georgia, using as its theme "The Great Commission."

Wednesday Evening services opened by singing "Standing On The Promises" led by Eleanor Sheffield, song leader for the Wednesday Evening services. Connie Lacey was pianist for the entire session. Prayer was offered by Rev. Glenn Thomas. Edith Shiver gave her personal testimony emphasizing the impact of the Woman's Auxiliary on and in her life. The offertory prayer was offered by Martha Everson. A collection of old hymns and gospel songs were rendered by the Calvary Quartet of the Twin Cities District. Rev. Ronald Wallace introduced Rev. T.G. (Tom) Hamilton, the speaker for the evening. Brother Tom delivered a very challenging message on the "Mission of the Church" using Matthew 28:18-20 and John 20:21 as his text. The dismissal prayer was rendered by Rev. Ronald Wallace.

Thursday morning's session was opened by singing "Wonderful, Wonderful Jesus" led by Barbara Dunbar, song leader for the remainder of the session. Prayer was offered by Barbara Roberts. Special music "There Is A Saviour" was rendered by Lynda Blanchard. Edith Shiver introduced our devotion speaker, Doris Sheffield. As always she gave a superb devotion using Matthew 28:19 as her text.

President Janice Wallace recognized all missionaries present for the session. Those present were: Foreign missionary, Debbie Griffin; Home missionaries: Sebrina Ray and Debbie Lynn. Also recognized were mothers of missionaries: Mary Griffin and Fleda Snow. The Credentials Committee report was given by Vice President, LaRee Findley. Motion carried to accept the report and seat the delegates. (See Report) The Remembrance service was conducted by Mary Bruner. Those remembered were: Ruth North of Corinth Church; Betty Bigford and Beda Chapman of First Brunswick Church; Arena Davidson, Glennville and Mrs. J.B. Rice, Midway Church. After a moment of silent meditation, Mary led in prayer closing the Remembrance service. A report of the Georgia Retreat was given by Louise Ivey. The dates for the 1991 Retreat was given by President Janice Wallace as March 22 & 23. Willie Clyde Henderson gave the WNAC, Phenix, Arizona report. Dr. Mary Ruth Wisehart gave a report from the National office, acquainting us with some new materials available and enlightening us of some goals and project. She praised our past giving and encouraged us to continue and even increase our future giving.

The morning worship service was opened by singing "We've A Story To Tell To The Nations." Prayer was offered

by Rev. Herbert Waid. Special music was rendered by an impromptu choir of Georgia Woman's Auxiliary members under the direction of LaRee Findley. The morning message was delivered by Debbie Griffin. She chose as her text Matthew 16:13-16. The dismissal prayer and the blessing over the food was prayed by Rev. Ronald Wallace.

The session reconvened at 1:30 and was opened by singing "When I Survey the Wondrous Cross." Prayer was offered by Edith Shiver. Martha Everson conducted a question and answer session with a panel of Georgia missionary wives, Debbie Lynn, Sebrina Ray and Mary Bruner, proxy for Delores Burns. After the informative session, Martha dismissed the panel with prayer.

The business session continued with Debbie Lynn giving a report on WNAC Retreat in Ridgecrest. Margaret Ann Daniels gave the Finance Committee Report. Motion carried to accept the report (See report). Copies of the Treasurer's Report were distributed. Motion carried to accept the report (See report). Wanda Cooper gave the Resolution Committee Report. Motion carried to accept report and vote on resolutions item by item (See report). Louise Ivey gave the report of the Registration Committee. Motion carried to accept report (See report). Edith Shiver gave a Historical Report of the Georgia Woman's Auxiliary Convention.

Delegates who volunteered to represent Georgia at the WNAC to be held in Charleston, West Virginia in July 1991 were: Shirley Sharpston, Betty Henderson, Shirley Kimbrel, Donna Dollar, Edith Shiver, Doris Sheffield, Bonnie Williams, Geraldine Waid, Mary Lee Fowler, Barbara Dunbar, Rachel Horne, Edwina Drinkwater, Belyn Pierce, Argent Corbett and Valerie Price. Each district submitted a name prior to the Convention for one of its members to serve on the Nominating Committee. Those elected to serve will choose their chairperson. The list is included in the reports. A song "Wherever He Leads I'll God" was sung prior to the dismissal prayer for the session.

Respectfully submitted

Rachel Horne, Secretary

#### REGISTRATION REPORT:

State Officers, 8; Voting Delegates 74; Ministers, 41; Visitors 85; Missionaries 3; National Officers 1; Out of State visitors 5; TOTAL REGISTRATION 217.

## CREDENTIALS REPORT:

The following Districts have properly reported and are eligible for seats in this convention: Chattahoochee, Georgia Union, Little River, Martin, Midway, North Georgia, Ogeechee, South Georgia, Twin Cities, Union. Fifty-nine local auxiliaries properly reported and paid dues.

## RESOLUTIONS REPORT:

### BE IT RESOLVED THAT:

1. That the Lora Shutes State Missions Project for 1990-91 be for accounts of all our Georgia Missionaries. We recommend that the goal of \$7,000 be adopted and that the funds be divided as follows:

Bishops Account - 30%  
Crowsons Account - 30%  
Creechs Account - 20%  
Griffin Account - 20%

This resolution was submitted by the Union District.

2. That the Woman's Auxiliary Secretary send a schedule of dates of District Auxiliary Workshops and annual meetings to the State Executive Secretary to avoid conflicts with meetings scheduled by other boards.
3. WHEREAS, the Georgia State Woman's Auxiliary Convention is an organization within the Georgia State Association of Free Will Baptists, and

WHEREAS, the Georgia State Association Constitution does not contain a section including the Georgia State Woman's Auxiliary, and

WHEREAS, it would be beneficial to the Georgia Woman's Auxiliary Convention to be included for Internal Revenue Service Tax exemption under the Georgia State Association, therefore,

BE IT RESOLVED that the Georgia Woman's Auxiliary Convention request inclusion in the Constitution of the Georgia State Association of Free Will Baptists, Article III, Section 8, as follows:

"There shall be a Georgia State Woman's Auxiliary Convention. They shall elect their officers, conduct their business and maintain their treasury."

4. WHEREAS, Resolution 3 requires a Constitutional change, therefore,

BE IT RESOLVED, upon the adoption of Resolution 3, that we make the following amendment to the Georgia Woman's Auxiliary Convention Constitution, Article I:

"This organization shall be know as the Georgia Woman's Auxiliary Convention of the Georgia State Association of Free Will Baptists."

Adding the phrase: "of Georgia State Association of Free Will Baptists."

5. WHEREAS, the State Woman's Auxiliary fiscal year is November 1 to October 31,

BE IT RESOLVED that all Districts be requested to have their reports to the State Secretary and Treasurer by October 15.



ANNUAL TREASURER'S REPORT  
 GEORGIA STATE WOMAN'S AUXILIARY  
 Statement of receipts and disbursements  
 for the year ended October 31, 1990

Balance November 1, 1989

\$ -0-

RECEIPTS:

Treasurer - Barbara Roberts	\$ 2,087.54	
Designated Giving	24,557.39	
Prayer Retreat	3,433.00	
Offering (Retreat)	192.76	
W.N.A.C.	7.50	
State Dues	316.75	
Interest on Checking	93.48	
Total Accountable		<u>30,688.42</u> \$30,688.42

DISBURSEMENTS:

WNAC/State Designated Funds	\$24,557.39	
Prayer Retreat	2,996.71	
Love Offering (Bishop/Creech)	400.00	
Check	43.39	
Postage	25.00	
		<u>28,022.49</u>
Balance on hand October 31, 1990		\$ 2,665.93

Respectively Submitted

Janet Baxley, Treasurer

+ + + + +

DOT HARVEY STUDENT LOAN FUND  
 FREE WILL BAPTIST BIBLE COLLEGE  
 Annual Report  
 October 1, 1989 - September 30, 1990

Balance on October 1, 1989		\$3,435.97
Loans Awarded Spring, 1990	\$3,400.00	
Gifts Received		\$ 702.00
Payments Collected (30)		2,827.00
Balance September 30, 1990		\$3,564.97

LOAN FUND SUMMARY  
 September 30, 1990

Funds Available	\$ 3,564.97
Amount Borrowed	\$22,008.51
Total Fund Worth	\$25,573.48



## ANNUAL REPORT FOR 1989-90 STATE WOMANS AUXILIARIES

	NOV 89	DEC 89	JAN 90	FEB 90	MAR 90	APR 90	MAY 90	JUN 90	JUL 90	AUG 90	SEP 90	OCT 90	TOTALS
DUES				\$28.00		\$2.00		\$20.00	\$15.00	\$70.00	\$587.50	\$860.00	\$1582.50
CO-LABORER	\$49.00	\$171.50	\$116.50	\$174.60	\$196.00	\$117.00	\$67.50	\$158.50	\$123.00	\$114.50	\$150.50	\$190.80	\$1629.40
EMPHASIS	\$5.00			\$35.00						\$186.00	\$609.99	\$149.00	\$984.99
FOREIGN STUD.	\$2.00	\$1.00			\$93.16	\$22.00			\$2.00			\$4.00	\$124.16
MEMORIAL STUDENT	\$3.00	\$6.00	\$5.00	\$16.00	\$11.00		\$2.00	\$14.00	\$3.00	\$2.00	\$3.00	\$3.00	\$68.00
PROVISION CLOSET												\$26.00	\$26.00
EUNICE EDWARDS		\$10.00		\$33.50	\$54.00	\$3.00	\$3.00	\$7.00	\$21.00	\$37.55	\$12.50	\$106.00	\$287.55
OTHER				\$1.00		\$1.00		\$25.00		\$1.00	\$6.00		\$34.00
STATE OF GEORGIA													\$0.00
GENERAL FUND													\$0.00
STATE PROJECT-SHUTE		\$182.50	\$48.00	\$81.00	\$524.00	\$586.02	\$352.89	\$582.00	\$953.00	\$907.00	\$870.50	\$471.00	\$5557.91
OTHER				\$50.00								\$10.00	\$60.00
				Barnard								Minutes	
LUTHER BURNS		\$35.00	\$42.55	\$15.00	\$103.25	\$22.50	\$21.33	\$7.11	\$17.50	\$24.25	\$23.43	\$105.00	\$416.92
OGRECHER MISSION		\$64.50	\$55.25	\$15.00	\$15.00	\$24.63	\$15.00		\$15.00	\$43.63	\$30.00	\$22.60	\$300.61
BIBLE COLLEGE													\$0.00
FYBBC-TN													\$0.00
DOT HARVEY	\$11.00	\$57.00	\$58.00	\$94.00	\$37.00	\$47.00	\$21.00	\$40.00	\$35.00	\$48.00	\$57.00	\$186.00	\$699.00
CHILDREN'S HOME-AL	\$50.00	\$35.00	\$10.00	\$5.00		\$35.00	\$10.00	\$15.00	\$125.00	\$10.00	\$10.00	\$5.00	\$310.00
FOREIGN MISSIONS						\$90.00							\$90.00
GENERAL FUND		\$30.00		\$94.03	\$10.00		\$209.00	\$175.15			\$97.01		\$615.19
LAURA BARNARD OFF	\$5.00		\$77.00			\$468.50	\$722.93	\$207.30	\$61.16		\$91.00	\$5.00	\$1637.89
JERRY BANKS	\$11.00	\$11.00	\$10.00	\$12.00	\$11.00	\$11.00		\$32.00	\$12.00		\$11.00	\$11.00	\$132.00
ALAN CROWSON	\$150.00	\$25.00	\$165.00	\$35.00	\$71.00	\$195.00	\$25.00	\$20.00	\$275.00	\$85.00	\$40.00	\$335.00	\$1421.00
DEBBIE GRIFFIN	\$89.00	\$179.50	\$143.75	\$118.00	\$185.00	\$164.63	\$20.00	\$153.88	\$200.00	\$68.63	\$80.00	\$867.60	\$2269.99
HANNA	\$2.00	\$62.00	\$6.00	\$88.00	\$7.00	\$23.00		\$12.00	\$7.00	\$10.00	\$2.00	\$12.00	\$231.00
WESTFIELD PASTORS	\$4.00	\$2.00	\$26.00	\$2.00	\$32.00	\$4.00	\$18.00	\$26.00	\$17.00	\$36.00	\$38.00	\$29.00	\$234.00
SPANISH CONTACT	\$1.00	\$1.00		\$1.00	\$1.00	\$1.00		\$2.00	\$3.00		\$1.00	\$51.00	\$62.00
BISHOPS	\$40.00	\$195.00	\$118.55	\$35.00	\$303.30	\$210.00	\$220.39	\$64.61	\$155.00	\$126.75	\$80.92	\$345.00	\$1894.52
MCLAIN		\$40.00	\$10.00	\$90.00	\$10.00	\$10.00	\$30.00	\$20.00	\$10.00	\$30.00	\$30.00		\$280.00
TALLENT			\$30.00			\$15.00				\$15.00	\$15.00	\$30.00	\$105.00
CREECH					\$16.00	\$109.45		\$528.20	\$40.00	\$3.55		\$270.23	\$967.43
EAGLETON							\$10.00		\$20.00	\$10.00	\$20.00	\$10.00	\$70.00
OTHER										\$10.00		\$100.00	\$110.00
HOME MISSIONS										Nix		Nix	
GENERAL FUND		\$257.76		\$122.25				\$25.00					\$405.01
PRE-THANKSGIVING		\$603.66	\$244.50	\$25.00		\$43.00							\$916.16
ALICE LUPTON			\$35.00	\$103.00								\$5.00	\$143.00
BOB WHITE	\$5.00		\$10.00		\$15.00	\$5.00			\$10.00		\$10.00		\$55.00
BOBBY CLYATT		\$21.00											\$21.00
DENNIS KERN			\$40.00										\$40.00
LARRY REYNOLDS			\$25.00										\$25.00
REAGANS				\$31.50	\$185.60								\$217.10
JERRY MCCLARY					\$102.50								\$102.50
PAUL THOMPSON					\$102.50								\$102.50
VIRGIN ISLAND SCHOOL				\$145.00									\$145.00
REX LYNN												\$5.00	\$5.00
RETIREMENT & INSUR.								\$30.00	\$12.00				\$42.00
RETIRED MINISTERS										\$120.00			\$120.00
										Maness & Harper & Trails		\$122.06	\$122.06
YOUTH CAMP													\$0.00
SAN JUAN-ST. CROIX		\$100.00										\$100.00	\$200.00
TOTALS	\$427.00	\$2090.42	\$1276.10	\$1449.88	\$2085.31	\$2209.73	\$1745.04	\$2172.75	\$2131.66	\$1958.96	\$2876.35	\$4436.29	\$24862.39

REPORT OF THE AUDITING COMMITTEE  
OF THE  
GEORGIA STATE ASSOCIATION OF FREE WILL BAPTISTS

January 1 - December 31, 1989

The Auditing Committee has examined the financial statements and records of the Georgia State Association of Free Will Baptists for the calendar year 1989. We found everything to be in order and properly documented.

This is the first year for the Computerized Central Accounting System that was recommended to the State Association by the 1987 State Auditing Committee. We find this method of accounting is in keeping with standard business procedures and enhances our ability to properly audit the State Association's financial records.

We invite all of our Georgia State Association members to visit the State Office and view the bookkeeping procedures and records. The State Executive Secretary/Treasurer and the Secretary/Bookkeeper assure us they will be glad to show our members how your Georgia State Association money is being processed and distributed. The procedures are extensive but orderly and understandable. To be able to briefly see the whole process should take at least the greater part of an hour.

We would like to express our appreciation to the State Office for promptly submitting all requested statements and supporting records. Also, thanks are in order for the State Office facilities that were made available to us so we could comfortably and efficiently perform our duties.

Respectfully submitted

The Auditing Committee: Mrs. Marian James, Chairman  
Mrs. Bessie Bryant  
Mrs. Virginia Grant

CONSTITUTION AND BY-LAWS  
GEORGIA STATE ASSOCIATION OF  
FREE WILL BAPTISTS

PREAMBLE

We, the Free Will Baptist of the State of Georgia, do ordain this Constitution for the purpose of advocating, promoting and increasing all phases of the cause of Christ.

ARTICLE I

This assembly shall be known as the Georgia State Association of Free Will Baptists, Inc.

ARTICLE II

SECTION 1. The officers of this association shall be a Moderator, an Assistant Moderator, a Clerk, an Assistant Clerk, and an Executive Secretary/Treasurer.

SECTION 2. The Executive Board shall be composed of the regular officers; the chairman of each of the standing boards; and the previous moderator, as an ex officio member for a period of two years following his term of office.

SECTION 3. This association shall be composed of all active Ministers, Deacons, Missionaries, and Board Members who are members of affiliated bodies: one (1) delegate for every three hundred (300) members or fraction thereof from District Associations; one (1) delegate for every one hundred (100) members or fraction thereof from each local affiliated church.

SECTION 4. All delegates from District Associations and local churches shall be elected from the laity of the body sending them.

SECTION 5. Funds to meet current needs of this body shall be paid to the treasurer of this association. Each District Association will give a minimum of fifteen dollars (\$15) per delegate authorized, and each local church will give ten cents (\$.10) per capita of their respective memberships.

SECTION 6. In order to pay our Georgia State Association's annual representation fee to the National Association, each local association is to be responsible to promote, receive and forward the amount designated by the National Association per church per year to the State Office, along with their annual State Association representation fee, on or before our annual State Association session.

### ARTICLE III

SECTION 1. It shall be the privilege of each affiliated District Association to recommend a member for each standing board. Terms of office on these boards shall be on a rotating basis which will necessitate the election by the State Association of five (5) members every two (2) years, thus giving each member a four (4) year term of office.

SECTION 2. There shall be a Board of Missions composed of members who are noted for their missionary zeal.

A. The Board of Missions shall employ missionaries as needed to establish Free Will Baptist mission/churches in the State of Georgia. These missionaries may be employed exclusively or jointly with other Free Will Baptist mission agencies.

B. A mission/church sponsored by the Georgia State Association and its missionary are under the authority of the State Association and the supervision of the Georgia State Board of Missions.

C. A mission/church does not have autonomous church status. As long as the mission/church is unable to provide for its own financial needs, enlist its own members and officers, maintain its own worship and outreach ministries and conduct its own business, it is in a dependent relationship to the State Association and its Board of Missions.

D. When the mission/church is self-sustaining, self-governing, self-discipling and self-propagating it should be organized into an autonomous Free Will Baptist church following the procedures adopted by the Georgia State Association.

E. After proper procedures are satisfied and the church is duly organized into an autonomous Free Will Baptist church it shall have all the normal rights, privileges and responsibilities of any other Free Will Baptist Church.

SECTION 3. There shall be a Board of Camp Mt. Bethel whose duties shall be:

A. To be responsible for maintenance, upkeep and insurance of Camp Mt. Bethel. This Board is to repair, modify or alter any building at Camp Mt. Bethel at their discretion with the provision that the Board of Trustees shall be considered if the cost of a project is to exceed \$2,500. The above "shall be considered" here means that the Board of Camp Mt. Bethel and the Board of Trustees shall function as a single joint board with co-equal authority and responsibility.

B. To schedule and arrange all camp sessions to be held at Camp Mt. Bethel, and to appoint the Camp Director each year. It is understood and agreed in this connection that the Camp Director shall be in authority in matters of faculty, curriculum, administration, food service, and recreation during camp sessions.



SECTION 4. There shall be a Board of Christian Education whose duties shall be:

A. To provide educational services for the members of the Georgia State Association of Free Will Baptists.

B. To set policy and supervise the functions of a State Youth Committee. This Board shall appoint this Committee to carry out Board policy.

C. To organize, sponsor and promote educational and inspirational retreats for our members.

D. To organize, sponsor and promote Sunday School and Church Training Service seminars.

E. To set policy and supervise the functions of a Historical Committee. This Board shall appoint the Historical Committee to gather and set forth for public knowledge and posterity the history of Georgia Free Will Baptists.

SECTION 5. There shall be a Board of Trustees whose duties shall be: the maintenance, upkeep and insuring of all State Association properties; the planning and supervision of all future developments and expansion of these properties as directed by this State Association except as otherwise provided in this Constitution.

SECTION 6. There shall be a Credentials Committee which shall consist of three (3) members who shall be in charge of the registration and examination of delegates and the receiving of all dues. These members are to be elected at the time of the General Officers.

SECTION 7. There shall be a member of the Board of Trustees of the Free Will Baptist Children's Home, Eldridge, Alabama, elected during the 1971 session for a term of four (4) years. Election thereafter shall be for a four (4) year term.

SECTION 8. There shall be a Georgia State Master's Men. They shall select their own officers and conduct their own business.

SECTION 9. There shall be a Georgia State Woman's Auxiliary Convention. They shall elect their officers, conduct their business and maintain their treasury.

#### ARTICLE IV

SECTION 1. All officers except board members and the Executive Secretary/Treasurer shall be elected to serve a term of two (2) years. The Executive Secretary/Treasurer shall be employed by the Executive Board of the Georgia State Association of Free Will Baptists, subject to the ratification of the Georgia State Association of Free Will Baptists at its next regular session, for an indefinite period, with an agreement of a sixty (60) day notice of termination by either the Executive Secretary or the Executive Board.

SECTION 2. Standing boards of the State Association have no power or final authority to hire full-time employees until the matter has been presented to and acted on by the State Association in session except where otherwise provided.

SECTION 3. Vacancies on any of the boards or committees which occur between regular sessions of this State Association, may be filled by the Executive Board until the convening of the annual session of said association.

SECTION 4. Election of all General Officers shall take place on the odd years of the calendar.

SECTION 5. If a member of any board fails in the function of his or her duty without good and sufficient reasons, the board of which the delinquent is a member may declare that particular office vacant. Further, this body shall have and does reserve the right to deal with any officer or board member who does not conduct his or her office in a Christian, businesslike manner according to the rules of Christian conduct as set forth in the New Testament.

Any standing board of this State Association may appoint proxies to serve in lieu of the absent members.

At the pleasure of the boards, and subsequent to the meeting from which the regular member is absent, the boards have the right to deal with the delinquent member in the manner stated in this section.

SECTION 6. Boards may be called into session by the Chairman or Vice-Chairman of said board, or by the Moderator or Assistant Moderator of the Georgia State Association of Free Will Baptists, upon the request of the majority of the members of said boards.

## AMENDMENTS

This Constitution may be changed, altered, or amended by a two-thirds (2/3) vote of all delegates present and voting at any regular session of the State Association. Prior to a final vote on any amendment, change or alteration, said amendment, change or alteration shall be submitted in writing to the Clerk of this association and shall lie on the table from one (1) business meeting to the next during the same session, during which time it shall be read at least two (2) times in open session. Officers, standing boards, and/or standing committees may be added or deleted as the need arises.



## SECTION 1.

A. All real property, checking and savings accounts or any other assets of this Association shall be in the name of the Georgia State Association of Free Will Baptists, Inc.

B. One or more of the corporate officers of the Association shall be the legal signers for all Georgia State Association of Free Will Baptists' business. These officers are: the Moderator as the corporate President; the Clerk as the corporate Vice-President; the Executive Secretary/Treasurer as the corporate Secretary/Treasurer.

C. The State Office shall be responsible for the safekeeping of the corporate seal and all official documents of this Association.

D. No State board may borrow money or financially obligate the State Association without the approval of the State Executive Board.

E. The fixed assets (building, land) of the Georgia State Association of Free Will Baptists shall not be liquidated except by a two-thirds (2/3) vote of the delegates present and voting at any regular session of the Association.

F. The records of all financial transactions shall be open to all members of the Georgia State Association. The financial transactions of the State Office and State boards shall be audited annually.

G. Annual financial reports of the State Office and State boards and the auditor's report shall be made to the State Association in session and be entered in the Annual State Minutes.

H. The State Treasurer shall be bonded in an amount stipulated by the State Executive Board.

I. This Association shall meet for its regular session annually on Thursday following the second Sunday in November and shall adjourn on the Saturday immediately following.

## SECTION 2.

A. When the State Association is not in session, the State Executive Board shall be fully authorized to do business in the name of the State Association.

B. The State Association has full authority to direct the State Executive Board in all business conducted on its behalf.

C. The State Executive Board shall report to the State Association in session concerning the business conducted for the State Association since its last convening.

D. The State Executive Board has the prerogative of deferring any matter to the State Association as a whole but is not under obligation to do so.

E. The State Executive Board shall meet quarterly on Friday or Saturday before the second Sunday of the following months: February; May; August. The November meeting shall be held just prior to regular meeting of the State Association.

### SECTION 3.

A. The Moderator shall preside at the Annual Sessions of the Georgia State Association of Free Will Baptists and the meetings of the Executive Board. The Moderator shall be the President of the Corporation known as the Georgia State Association of Free Will Baptists, Inc.

B. The Assistant Moderator shall preside in the absence of the Moderator and/or when appointed by the Moderator as the need arises.

C. The Clerk shall keep records of the proceedings of the Annual Associational meetings and of the Executive Board meetings. It shall also be his responsibility to have the minutes of these sessions printed and distributed. The Clerk shall be the Vice-President of the Corporation known as the Georgia State Association of Free Will Baptists, Inc.

D. The Assistant Clerk, in the absence of the Clerk, shall fulfill the functions and duties of the Clerk as stated in paragraph C of this document.

### SECTION 4

A. The Executive Secretary shall be responsible and accountable to the Executive Board in the fulfillment of the duties of his office as determined by the Executive Board.

B. The Executive Secretary shall be allowed four (4) weeks vacation per year with pay.

C. Funds received by the Executive Secretary for revivals, special speaking engagements and promotional meetings, shall go into the Cooperative Fund. The exception to this regulation relates to any remuneration received by the Executive Secretary during his four (4) weeks vacation, which funds shall be his personally and need not be accounted for to this State Association.

D. Salary, mileage, and operational expenses of the Executive Secretary shall be determined by the Executive Board.

E. The Executive Secretary shall be Secretary/Treasurer of the Corporation known as the Georgia State Association of Free Will Baptists, Inc.

### SECTION 5.

A. The Executive Board shall serve as the Placement Committee for the State Association. In this capacity the board shall investigate places suitable for this meeting and make recommendations to said State Association. Meeting places shall be determined two (2) years in advance.

B. The Executive Board shall plan the program for the annual meetings of the Georgia State Association of Free Will Baptists and the annual meetings shall follow the programs as closely as possible. Business sessions shall be conducted according to the commonly accepted rules of Parliamentary Procedure.

C. The Executive Board shall formulate the budget for the State Association annually and recommend to the body in session the allocations to be observed in the Cooperative Plan of Giving. This board shall in addition to the above stated duties, also recommend a mileage rate for travel by the members of all of the standing boards of said association.

#### SECTION 6.

Necessary committees shall be appointed by the Moderator unless otherwise provided for by the body.

#### SECTION 7.

These By-Laws may be altered, changed, or amended at any regular session of this association by a two-thirds (2/3) vote of delegates present and voting.