

The President's Paragraphs

Dr. J. D. O'Donnell



"Behold now, the place where we dwell with thee is too strait for us" (II Kings 6: 1). Thus spoke the students of Elisha to that great teacher of many centuries ago. This prophetic school found that in the revival of that day that so many students came that their facilities were overflowing. They decided to build new ones.

Oklahoma Bible College finds itself in a similar predicament. The present campus facilities are filled and overflowing. The response of day students this year is up to and beyond our expectations. Truly, the place where we dwell is too small for us.

The College must build for this growing student body. Before our denomination is one of the greatest opportunities it has ever known. The majority of today's young people plan to attend a college somewhere. The denomination has the responsibility of providing for this opportunity in a wholesome spiritual environment on a Christian Campus.

At this year's state association the board of trustees of the College will offer plans for the future development of the

campus to meet this need. The College cannot grow unless the denomination wants it to grow. The desire for it to grow will be expressed in the response of giving by the people.

This Harvest Day offering will be an opportunity for you and your church to respond with a gift and a pledge of monthly support. Presently less than one half of the churches give a monthly offering. The full potential of the College will be realized when all our churches rise to support this cause. Give liberally this Harvest Day.

Student Body (Con't. from inside)

Johnny Williams, So..... Cushing
Ted Will, Sp..... Hennessey
Arilla Wode, Fr..... Collinsville
Harold Dean Young, Fr... Oklahoma City

TEXAS

David Bostic, Fr. Fort Worth
Annette Beall, Fr..... Fort Worth
Sylvia Fulce, So..... Denison
John Clyde Gillentine, Fr Dallas
John Parr, Fr..... Bowie

Second Class Postage Paid
At Moore, Oklahoma, 73060

OKLAHOMA BIBLE COLLEGE
BOX 343
MOORE, OKLAHOMA 73060

Published monthly except July
and December by Oklahoma Bible
College, Box 343, Moore, Oklahoma,
73060. "Second class postage paid
at Moore, Oklahoma, 73060."

Oklahoma Bible College

NEWS-LETTER

Volume II, Number 8

Box 343
Moore, Oklahoma

September, 1967

FULL TIME ENROLLMENT JUMPS 56 PER CENT FOR FALL TERM

The registration figures for the fall semester at Oklahoma Bible College reveals that the full-time day college enrollment increased fifty-six per cent over the previous fall semester. Registrar Eugene Workman reports that fifty students of the total enrollment of seventy-nine, are full-time students as compared with thirty-



BUYING BOOKS---After a long wait, freshman Johnny Jones, left, and sophomores Joel Kircher and Carol Standley reach the head of the line for purchasing textbooks. During the two-day registration period sophomores Mary Jane Ponsler, left, and Judy Hearron, (backs to camera) assisted in the bookstore.

two last fall. The enrollment of part-time day students presently stands at eleven. The remaining eighteen students are enrolled in the evening school division.

The incoming freshmen class is the largest that has matriculated during the nine-year history of the College, numbering thirty-five full-time students and fifteen part-time students for a total of fifty members.

The sophomore class has fourteen full-time enrollees and four part-time members for a total of eighteen. Ten students are classified as special students.

The most interesting feature of every new school year is the new student body. After all, OBC, like any college, exists for their sake. There are a number of notable features in the 1967-68 student body. Six states are represented on the OBC campus. They are Arkansas, Kansas, Missouri, Ohio, Oklahoma, and Texas. The men students outnumber the women students, fifty-three to twenty-five. Thirty-eight of the students are being housed in college dormitories. Twenty-six of the day students are ministerial students.

The students are listed by states with hometowns and class ranks inside this issue.

Harvest Day Offers Challenge To Underwrite Budget

Plans for the 1967 Harvest Day drive on Sunday, October 15, continue to progress according to Dr. J. D. O'Donnell, President of Oklahoma Bible College. "We will again be attempting to underwrite our current budget with cash gifts and pledges received in churches over the five state area we are now serving," he stated. "If we had not received the gratifying support of the College's friends at Harvest Day time last year, we could not have operated our College as we did during this past school term. We again turn to you for help in meeting our budget," O'Donnell concluded.

The \$62,030 budget for the 1967-68 school year was approved at the annual meeting of the Oklahoma State Association of Free Will Baptists last October. Pastors or key personnel of the churches are asked to report the amount of their Harvest

Day offering to the College booth at the State meeting at Ada, October 17-19.

Sunday School classes, C.T.S. groups and other church organizations are urged to begin a special three-Sunday drive on behalf of the Harvest Day offering. There may be classes desiring to pledge a definite amount to be given monthly for the next year in addition to a cash gift at this Harvest Day time.

Pledge cards will be made available to those who desire to give regularly for a period of one year. Pastors are urged to include OBC in their regular church budgets for the coming year. Individual pledge cards and personal checks may be counted toward the fulfillment of the church budget.

Pastors will be receiving Harvest Day posters by mail for display at strategic locations in the church.

1967-68 STUDENT BODY

ARKANSAS

Edwin Bowden, Jr., So.....Booneville
Nora Mae Jernigan, Fr.....Fort Smith

KANSAS

Sid Nichols, So.....Wellington

MISSOURI

Gary Terrell, Fr.....Joplin
Richard Terry, Fr.....Lee's Summit

OHIO

Joseph Harr, Fr.....Otway

OKLAHOMA

Carol Banks, Fr.....Sapulpa
Jerry Banks, So.....Sapulpa
Diann Barnard, Fr.....Moore
Doug Brown, Fr.....Tulsa
Donald Bryan, Fr.....Tulsa
Evelyn Bryan, Fr.....Tulsa
Gloster Caton, Fr.....Ada

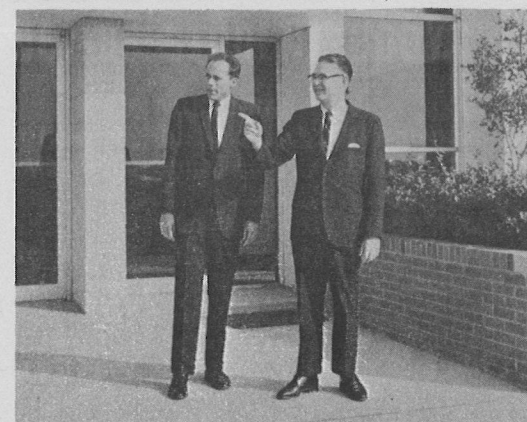
Bobby Cearley, Fr.....Tecumseh
Willie Clagg, Fr.....Norman
Joe Edward Conn, Fr.....Lexington
Sandra Day, Fr.....Tulsa
Gary Dodson, Fr.....Norman
Patsy Dodson, Fr.....Norman
Sandra Duck, Fr.....Claremore
Dwight Eidson, Fr.....Oklahoma City
Sherre Eidson, Sp.....Oklahoma City
James Evans, Sp.....Lexington
Mary Evans, Sp.....Lexington
Joyce Farmer, Fr.....Moore
Donna Faught, Fr.....Coweta
Richard Forster, Sp.....Oklahoma City
Richard Gallant, Fr.....Del City
Charles Gann, Fr.....Tulsa
Gayle Gardner, So.....Purcell
Jerry Haley, Fr.....Norman
Harold Leon Hargrove, Fr.....Tulsa
Pam Hargrove, Sp.....Tulsa
Harold Hawkins, Sp.....Norman
Thelma Jane Haws, Fr.....Tulsa
Judy Hearn, So.....Moore
Sue Ann Hinesley, Fr.....Tulsa

(Continued on next page)

BOARD MEETING DRAWS FOUR-STATE REPRESENTATION

On August 25, the Board of Trustees met in what will probably prove to be a very historic session in the life of the Oklahoma Bible College. Besides the board members and the state executive secretary, Rev. N. R. Smith, representatives from Texas, Arkansas, and Missouri were present. Also invited, but unable to attend, were representatives from Kansas.

These representatives were invited to sit in the meeting as this year's annual reports were given and as the 1968-69 budget was discussed. After the general business of the board, plans for enlargement of the curriculum of the College were presented. Plans were made to ask states adjacent to Oklahoma to send representatives to act as an Advisory Council to the Board of Trustees. Each state interested in the work of the College will be invited to elect two members to this Advisory Council.



DISCUSSING various aspects of the campus relative to the August Board meeting are Dr. J. D. O'Donnell, right, OBC President, and Rev. O. T. Dixon, evangelist-pastor from Springfield, Missouri. Rev. Dixon and Rev. Harry Beatty, Promotional Secretary for the state of Missouri, represented their state at the meeting which was attended by representatives from various states.

Appointed to this Council until their respective state associations meet were as follows: from Texas, Reverends H. Z. Cox and Roy Norie; from Arkansas, Reverends Bob King and Fred Warner; from Missouri, Reverends Woodrow Matthews and Clarence Burton; from Kansas, Reverends Dick Shade and Robert Sharry; from Colorado, Reverend Roy Thomas.

STUDENT BODY (Continued)

Orville Hood, So.....Oklahoma City
Lewis Ray Howell, Fr.....Lone Grove
Danny Hurt, Fr.....Tulsa
Jessie Jennings, Sp.....Norman
Johnny Jones, Fr.....Shawnee
Joel Kircher, So.....Tulsa
Shirley Martin, So.....Oklahoma City
Randall Miller, So.....Midwest City
James Mobley, Fr.....Moore
La Beth Myers, Sp.....Oklahoma City
John Nemeth, Fr.....Midwest City
Marjorie Mae Odle, Fr.....McAlester
Kandice O'Hern, Fr.....Hennessey
Thomas O'Hern, Sp.....Hennessey
Andy Owens, Fr.....Del City
David Parish, Fr.....Ardmore
Mary Jane Ponsler, So....Oklahoma City
Karen Rhoades, Fr.....Ardmore
Richard Rust, So.....Shady Point
Earl Scroggins, So.....Ada
Robert Scroggins, Fr.....Ada
Lester Showell, Fr.....Del City
Helen Smith, Fr.....Owasso
Larry Smith, Fr.....Purcell
Dale Smith, So.....McAlester
Carol Standley, So.....Sulphur
Vernon Stephens, Sp.....Blanchard
Billy Ray Storts, Sp.....Oklahoma City
David Sutton, Fr.....Moore
Ivan Van Winkle, Fr.....Norman
Paul Watford, Jr., So.....Moore
Eugene West, Sp.....Norman
Louis Wickham, So.....Norman

(Continued on page 4)